



**Dialogic® Brooktrout® SR140 Fax Software with
Cisco Unified Communications Manager 8.0**
Installation and Configuration Integration Note

IMPORTANT NOTE

This document is not to be shared with or disseminated to other third parties, in whole or in part, without prior written permission from Dialogic. To seek such permission, please contact your Dialogic Sales Representative.

Copyright and Legal Notice

Copyright © 2010 Dialogic Inc. All Rights Reserved. You may not reproduce this document in whole or in part without permission in writing from Dialogic Inc. at the address provided below.

All contents of this document are furnished for informational use only and are subject to change without notice and do not represent a commitment on the part of Dialogic Inc. and its affiliates or subsidiaries ("Dialogic"). Reasonable effort is made to ensure the accuracy of the information contained in the document. However, Dialogic does not warrant the accuracy of this information and cannot accept responsibility for errors, inaccuracies or omissions that may be contained in this document. INFORMATION IN THIS DOCUMENT IS PROVIDED IN CONNECTION WITH DIALOGIC® PRODUCTS. NO LICENSE, EXPRESS OR IMPLIED, BY ESTOPPEL OR OTHERWISE, TO ANY INTELLECTUAL PROPERTY RIGHTS IS GRANTED BY THIS DOCUMENT. EXCEPT AS PROVIDED IN A SIGNED AGREEMENT BETWEEN YOU AND DIALOGIC, DIALOGIC ASSUMES NO LIABILITY WHATSOEVER, AND DIALOGIC DISCLAIMS ANY EXPRESS OR IMPLIED WARRANTY, RELATING TO SALE AND/OR USE OF DIALOGIC PRODUCTS INCLUDING LIABILITY OR WARRANTIES RELATING TO FITNESS FOR A PARTICULAR PURPOSE, MERCHANTABILITY, OR INFRINGEMENT OF ANY INTELLECTUAL PROPERTY RIGHT OF A THIRD PARTY.

Dialogic products are not intended for use in medical, life saving, life sustaining, critical control or safety systems, or in nuclear facility applications.

Due to differing national regulations and approval requirements, certain Dialogic products may be suitable for use only in specific countries, and thus may not function properly in other countries. You are responsible for ensuring that your use of such products occurs only in the countries where such use is suitable. For information on specific products, contact Dialogic Inc. at the address indicated below or on the web at www.dialogic.com.

It is possible that the use or implementation of any one of the concepts, applications, or ideas described in this document, in marketing collateral produced by or on web pages maintained by Dialogic may infringe one or more patents or other intellectual property rights owned by third parties. Dialogic does not provide any intellectual property licenses with the sale of Dialogic products other than a license to use such product in accordance with intellectual property owned or validly licensed by Dialogic and no such licenses are provided except pursuant to a signed agreement with Dialogic. More detailed information about such intellectual property is available from Dialogic's legal department at 926 Rock Avenue, San Jose, California 95131 USA. **Dialogic encourages all users of its products to procure all necessary intellectual property licenses required to implement any concepts or applications and does not condone or encourage any intellectual property infringement and disclaims any responsibility related thereto. These intellectual property licenses may differ from country to country and it is the responsibility of those who develop the concepts or applications to be aware of and comply with different national license requirements.**

Dialogic, Dialogic Pro, Dialogic Blue, Veraz, Brooktrout, Diva, Diva ISDN, Making Innovation Thrive, Video is the New Voice, Diastar, Cantata, TruFax, SwitchKit, SnowShore, Eicon, Eicon Networks, NMS Communications, NMS (stylized), Eiconcard, SIPcontrol, TrustedVideo, Exnet, EXS, Connecting to Growth, Fusion, Vision, PowerMedia, PacketMedia, BorderNet, inCloud9, I-Gate, Hi-Gate, NaturalAccess, NaturalCallControl, NaturalConference, NaturalFax and Shiva, among others as well as related logos, are either registered trademarks or trademarks of Dialogic Inc. and its affiliates or subsidiaries. Dialogic's trademarks may be used publicly only with permission from Dialogic. Such permission may only be granted by Dialogic's legal department at 926 Rock Avenue, San Jose, California 95131 USA. Any authorized use of Dialogic's trademarks will be subject to full respect of the trademark guidelines published by Dialogic from time to time and any use of Dialogic's trademarks requires proper acknowledgement.

The names of actual companies and products mentioned herein are the trademarks of their respective owners.

Any use case(s) shown and/or described herein represent one or more examples of the various ways, scenarios or environments in which Dialogic products can be used. Such use case(s) are non-limiting and do not represent recommendations of Dialogic as to whether or how to use Dialogic products.

Contents

1	Scope	5
2	Prerequisites	5
3	Summary of Limitations	5
4	H.323 / H.323 Configuration Details	6
4.1	Cisco Unified Communication Manager 8.0 – H.323 / H.323 Configuration	6
4.2	Cisco 2800 Gateway	6
4.3	Dialogic® Brooktrout® SR140 Fax Software	6
4.4	Dialogic® Brooktrout® TR1034 Fax Board	7
4.5	Network System Configuration – H.323 / H.323 Configuration	7
4.5.1	Network Addresses	8
4.5.2	Dialing Plan Overview	8
4.6	Dialogic® Brooktrout® SR140 Fax Software Setup Notes	8
4.7	Dialogic® Brooktrout® TR1034 Fax PSTN Setup Notes	9
4.8	Cisco 2800 Gateway Setup Notes	9
4.8.1	Enable T.38 support	9
4.8.2	Configure line card interface	9
4.8.3	Configure IP Protocol	9
4.8.4	Configure Dial-Peers - POTS	10
4.8.5	Configure Dial Peers - VoIP	10
4.9	CUCM 8.0 Setup Notes – H.323 / H.323 Configuration	10
4.9.1	Configure Service Activation	11
4.9.2	Configure License	13
4.9.3	Configure SR140 Trunk	15
4.9.4	Configure H.323 Gateway Trunk	20
4.9.5	Configure Call Routing	25
5	H.323 / MGCP Configuration Details	28
5.1	Cisco Unified Communication Manager 8.0 – H.323 / MGCP Configuration	28
5.2	Cisco 2800 Gateway	28
5.3	Dialogic® Brooktrout® SR140 Fax Software	29
5.4	Dialogic® Brooktrout® TR1034 Fax Board	29
5.5	Network System Configuration – H.323 / MGCP Configuration	30
5.5.1	Network Addresses	30
5.5.2	Dialing Plan Overview	31
5.6	Dialogic® Brooktrout® SR140 Fax Software Setup Notes	31
5.7	Dialogic® Brooktrout® TR1034 Fax PSTN Setup Notes	31
5.8	Cisco 2800 Gateway Setup Notes	31
5.8.1	Configure line card interface	32
5.8.2	Configure MGCP	32
5.8.3	Configure Dial-Peers - POTS	32
5.9	CUCM 8.0 Setup Notes – H.323 / MGCP Configuration	33
5.9.1	Configure Gateway Trunk	33
5.9.2	Configure Call Routing	48
6	SIP / SIP Configuration Details	51
6.1	Cisco Unified Communication Manager 8.0 –SIP / SIP Configuration	51
6.2	Cisco 2800 Gateway	51
6.3	Dialogic® Brooktrout® SR140 Fax Software	52
6.4	Dialogic® Brooktrout® TR1034 Fax Board	52
6.5	Network System Configuration – SIP / SIP Configuration	53
6.5.1	Network Addresses	53

6.5.2	Dialing Plan Overview	53
6.6	Dialogic® Brooktrout® SR140 Fax Software Setup Notes	54
6.7	Dialogic® Brooktrout® TR1034 Fax PSTN Setup Notes.....	54
6.8	Cisco 2800 Gateway Setup Notes	54
6.8.1	Enable T.38 support.....	54
6.8.2	Configure line card interface	55
6.8.3	Configure IP Protocol	55
6.8.4	Configure Dial-Peers - POTS	55
6.8.5	Configure Dial Peers - VoIP.....	55
6.9	CUCM 8.0 Setup Notes – SIP / SIP Configuration	56
6.9.1	Configure SIP Trunk Security Profile	56
6.9.2	Configure SR140 Trunk	60
6.9.3	Configure Gateway Trunk	65
6.9.4	Configure Call Routing	70
7	SIP / MGCP Configuration Details	73
7.1	Cisco Unified Communication Manager 8.0 – SIP / MGCP Configuration	73
7.2	Cisco 2800 Gateway.....	73
7.3	Dialogic® Brooktrout® SR140 Fax Software	74
7.4	Dialogic® Brooktrout® TR1034 Fax Board.....	74
7.5	Network System Configuration – SIP / MGCP Configuration.....	75
7.5.1	Network Addresses.....	75
7.5.2	Dialing Plan Overview	75
7.6	Dialogic® Brooktrout® SR140 Fax Software Setup Notes	76
7.7	Dialogic® Brooktrout® TR1034 Fax PSTN Setup Notes.....	76
7.8	Cisco 2800 Gateway Setup Notes	76
7.8.1	Configure line card interface	76
7.8.2	Configure MGCP	77
7.8.3	Configure Dial-Peers - POTS	77
7.9	CUCM 8.0 Setup Notes – SIP / MGCP Configuration.....	78
7.9.1	Configure Call Routing	78
8	References	81

1 Scope

This document is intended as a general guide for configuring a basic installation of the **Cisco Unified Communications Manager Version 8.0 (CUCM 8.0)** for use with Dialogic® Brooktrout® SR140 Fax over IP (FoIP) software platform. The interoperability includes **SIP, H.323 and MGCP** call control and T.38/T.30 media.

There are four (4) call control configurations described within this Configuration Note, specifically:

Configuration	1	2	3	4
Protocol Between Fax Server and CUCM	H.323	SIP	H.323	SIP
Protocol Between CUCM and Gateway	H.323	SIP	MGCP	MGCP

The specific version of CUCM tested was 8.0.2.40000-1.

This document is not intended to be comprehensive and thus does not replace the manufacturer's detailed configuration documentation. Users of this document should already have a general knowledge of how to install and configure the **CUCM 8.0**.

The sample configuration shown and/or referred in the subsequent sections was used for lab validation testing by Dialogic. Therefore, it is possible and even likely that the example configuration will not match the exact configuration and versions that would be present in a deployed environment. However, the sample configuration provides a possible starting point to work with the equipment vendor for configuring your device. Please consult the appropriate manufacturer's documentation for details on setting up your specific end user configuration.

For ease of reference, the Dialogic® Brooktrout® SR140 Fax Software and Dialogic® Brooktrout® TR1034 Fax Boards will sometimes be denoted herein, respectively, as SR140 and TR1034. The Cisco Unified Communications Manager will be denoted herein as CUCM 8.0 or Cisco CUCM 8.0, or some other form thereof. All references to the SDK herein refer to the Dialogic® Brooktrout® Fax Products SDK.

2 Prerequisites

No special requirements to note.

3 Summary of Limitations

No special limitations to note.

4 H.323 / H.323 Configuration Details

4.1 Cisco Unified Communication Manager 8.0 – H.323 / H.323 Configuration

Vendor	Cisco
Model	Cisco Unified Communication Manager
Software Version	8.0.2.40000-1
Protocol to SR140	H.323
Protocol to Gateway	H.323

4.2 Cisco 2800 Gateway

Vendor	Cisco
Model	Cisco 2800 Integrated Service Router
Software Version	Cisco IOS Software, 2800 Software (C2800NM-ADVENTERPRISEK9_IVS-M), Version 12.4(25c), RELEASE SOFTWARE (fc2)
PSTN Device	Dialogic® Brooktrout® TR1034 Fax Board
Protocol to PSTN Device	T1 Robbed Bit Signaling with E&M Wink Start signal protocol
IP Device	Dialogic® Brooktrout® SR140 Fax Software and Cisco CUCM 8.0
Protocol to CUCM	H.323

4.3 Dialogic® Brooktrout® SR140 Fax Software

Vendor	Dialogic
Model	Dialogic® Brooktrout® SR140 Fax Software
Software Version	SDK 6.3.0
Protocol to CUCM	H.323
callctrl.cfg file	SDK 6.3.0 –All defaults

4.4 Dialogic® Brooktrout® TR1034 Fax Board

Vendor	<i>Dialogic</i>
PSTN Device	<i>Dialogic® Brooktrout® TR1034 Fax Board</i>
Software Version	<i>SDK 6.3.0</i>
Protocol to GW	<i>T1 Robbed Bit Signaling with E&M Wink Start signal protocol</i>
callctrl.cfg file	<i>All defaults</i>

4.5 Network System Configuration – H.323 / H.323 Configuration

The diagram below details the sample configuration used in connection with the H.323 / H.323 Configuration.

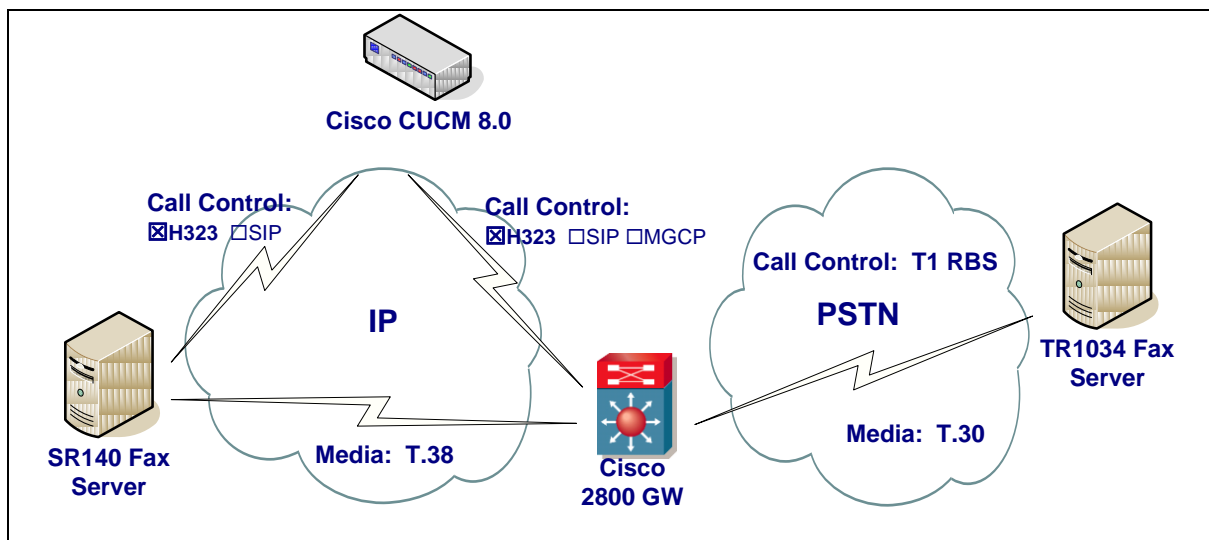


Diagram Notes:

- SR140 Fax Server = Fax Server including Dialogic® Brooktrout® SR140 Fax Software and third party fax application
- TR1034 Fax Server = Fax Server including Dialogic® Brooktrout® TR1034 Fax Board and third party fax application

4.5.1 Network Addresses

Device #	Device Make, Model, and Description	Device IP Address
1	Dialogic® Brooktrout® SR140	10.50.50.101
2	Cisco Unified Communication Manager 8.0	10.50.50.20
3	Cisco 2800 Integrated Service Router	10.50.50.21

4.5.2 Dialing Plan Overview

To call the SR140 from a POTS phone, dial 101101xxx, where x is a number between 0 and 9.

POTS(dial 101101xxx)—T1 RBS—>
Gateway(dial 101101xxx@10.50.50.20)—H.323—>
CUCM8.0(dial 101101xxx@10.50.50.101)—H.323—>SR140

To call the POTS lines of the Gateway, dial 100021xxx@10.50.50.20, where x is a number between 0 and 9, from the SR140.

SR140(dial 101021xxx@10.50.50.20)—H.323—>
CUCM8.0(dial 101021xxx@10.50.50.21)—H.323—>
Gateway(dial 101021xxx)—T1 RBS—>POTS

4.6 Dialogic® Brooktrout® SR140 Fax Software Setup Notes

For the sample test configuration, the SR140 was configured using the default values, consult the Dialogic® Brooktrout® Fax Products Installation and Configuration Guide for details.

The Installation and Configuration Guides are available from the site:

<http://www.dialogic.com/manuals/brooktrout/default.htm>

Note: DHCP cannot be used.

4.7 Dialogic® Brooktrout® TR1034 Fax PSTN Setup Notes

For the sample test configuration, the TR1034 was configured using the default values, consult the Dialogic® Brooktrout® Fax Products Installation and Configuration Guide for details.

4.8 Cisco 2800 Gateway Setup Notes

For the sample test configuration, the Cisco 2800 Gateway was configured the Cisco IOS Command-Line Interface. The specific items configured include:

- Enable T.38 support
- Configure line card interface
- Configure IP Protocol
- Configure Dial-Peers – POTS
- Configure Dial-Peers – VoIP

4.8.1 Enable T.38 support

The following lines will allow T.38 fax calls.

```
voice service voip
    fax protocol t38 ls-redundancy 2 hs-redundancy 0 fallback none
```

4.8.2 Configure line card interface

The following lines will allow T1 Robbed Bit Signalling with E&M Wink Start signal protocol.

```
controller T1 0/0/0
    framing esf
    clock source internal
    linecode b8zs
    cablelength short 133
    ds0-group 0 timeslots 1-24 type e&m-wink-start dtmf dnis
    description E&M Wink Start T1-RBS
```

Note: the ds0-group line must contain dtmf dnis when doing Wink Start.

4.8.3 Configure IP Protocol

The following will allow H.323 calls.

```
voice service voip
    fax protocol t38 ls-redundancy 2 hs-redundancy 0 fallback none
    h323
        session transport udp
```

Note: session transport must contain udp.

4.8.4 Configure Dial-Peers - POTS

The following will allow the phone numbers 101021000 to 101021999 to be dialed out through the POTS lines.

```
dial-peer voice 101021000 pots
  destination-pattern 101021[0-9][0-9][0-9]
  no digit-strip
  direct-inward-dial
  port 0/0/0:0
```

4.8.5 Configure Dial Peers - VoIP

The following will allow the phone numbers 101101000 to 101101999 to be dialed out through H.323 to CUCM.

```
dial-peer voice 101101000 voip
  description H323 to CUCM
  destination-pattern 101101...
  voice-class h323 1
  session target ipv4:10.50.50.20
  session transport udp
  codec g711ulaw
```

Note: The session target ipv4 contains the IP address for CUCM.

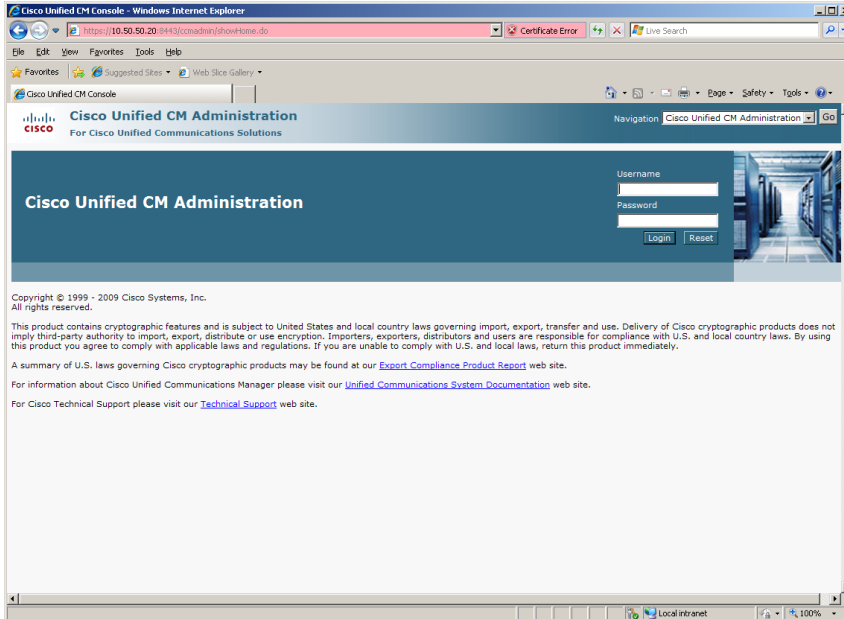
4.9 CUCM 8.0 Setup Notes – H.323 / H.323 Configuration

The CUCM 8.0 configuration values that were used in the sample configuration involve configuring the following items:

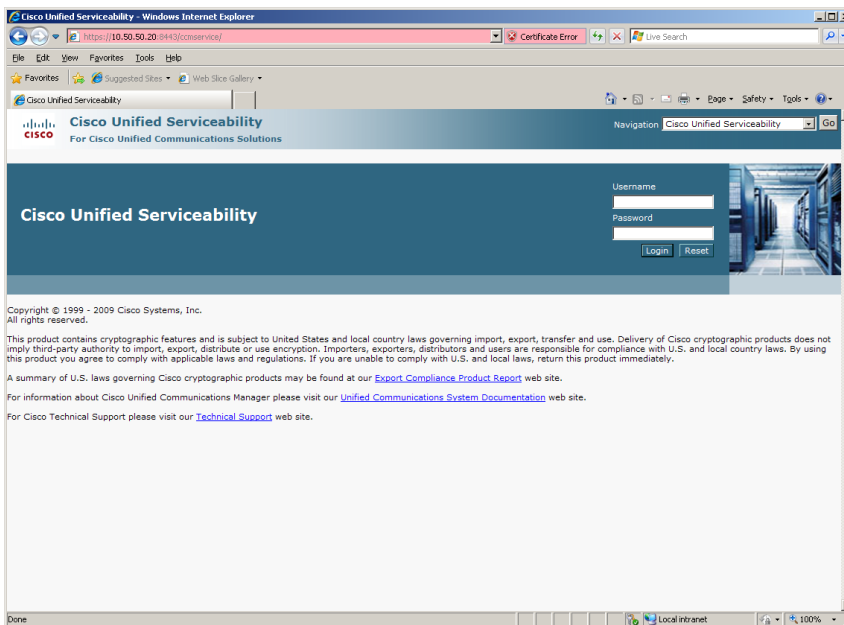
- Configure Service Activation
- Configure License
- Configure SR140 Trunk
- Configure Gateway Trunk
- Configure Call Routing

4.9.1 Configure Service Activation

Using a web browser, log into CUCM 8.0. The following Cisco Unified CM Administration screen appears.

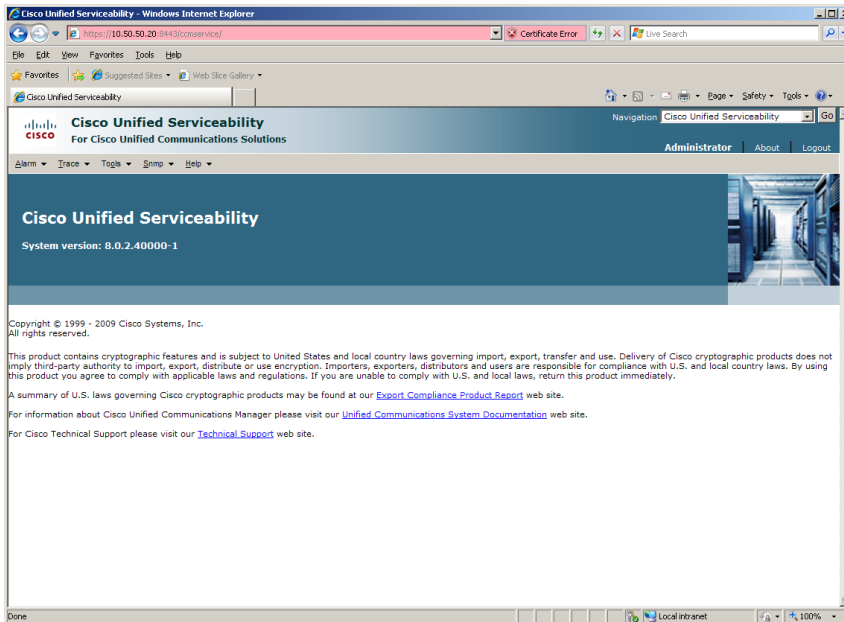


Select from the Navigation menu the option Cisco Unified Serviceability and press Go. The following Cisco Unified Serviceability screen appears.

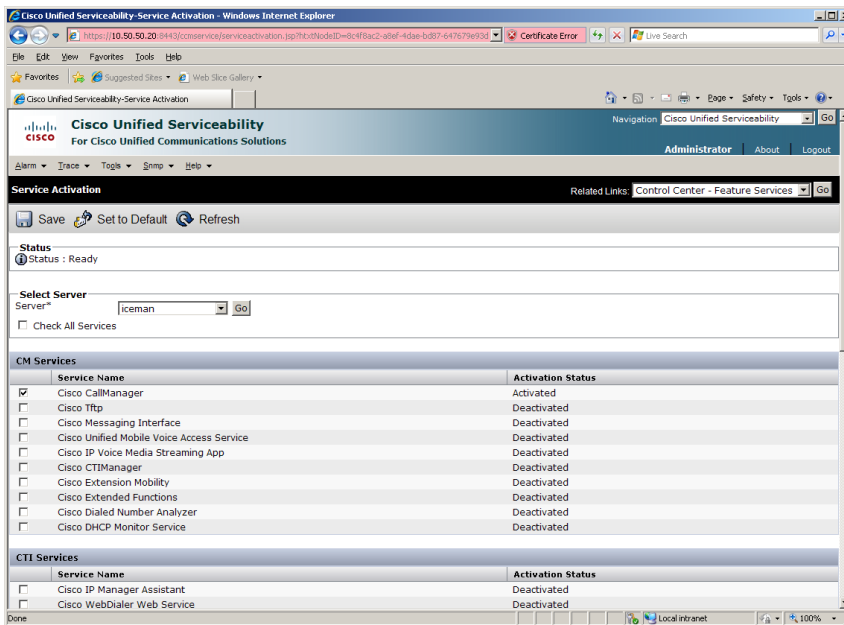


Enter the username and password and press Login. The following screen appears.

Dialogic® Brooktrout® SR140 Fax Software with Cisco Unified Communications Manager 8.0
Installation and Configuration Integration Note



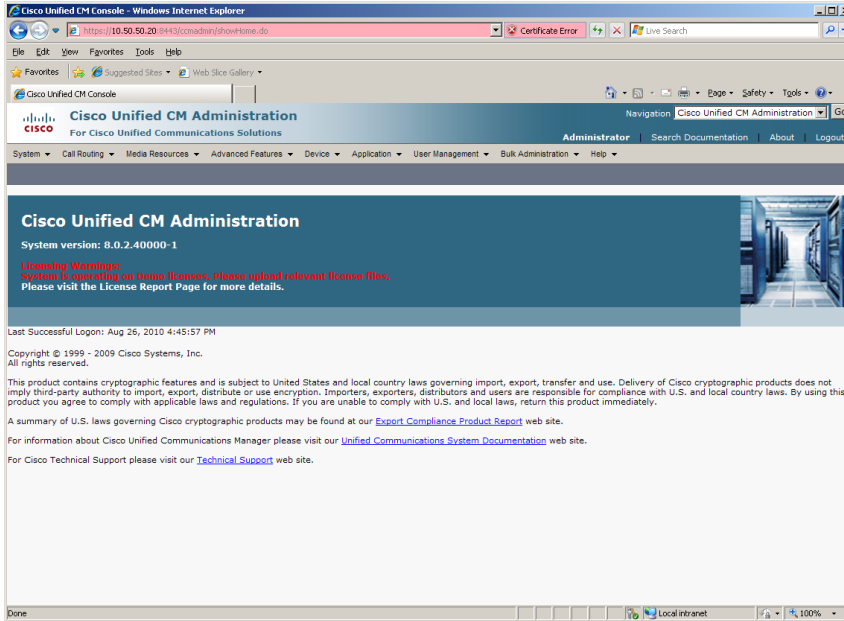
From the menu select Tools | Service Activation.



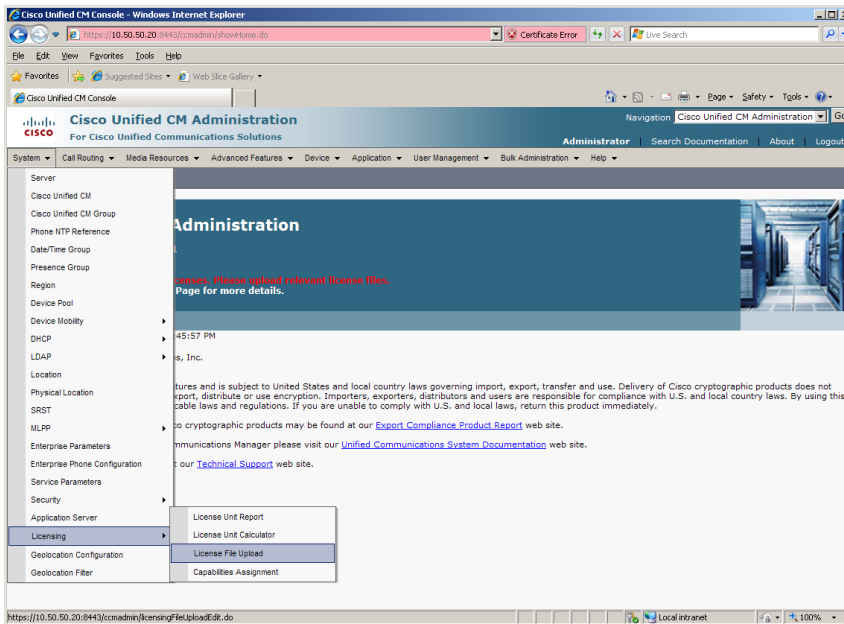
Select the server from the Sever pulldown menu. Under the CM Services, select Cisco CallManager, at the minimum and then press Save.

4.9.2 Configure License

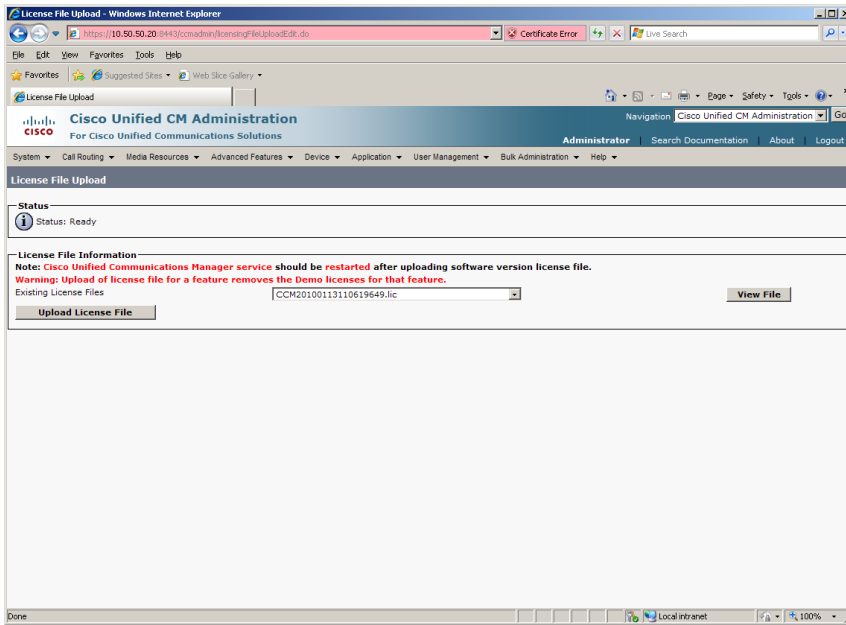
Using a web browser, log into the Cisco Unified CM Administration screen.



From the menu select System | Licensing | License File Upload.



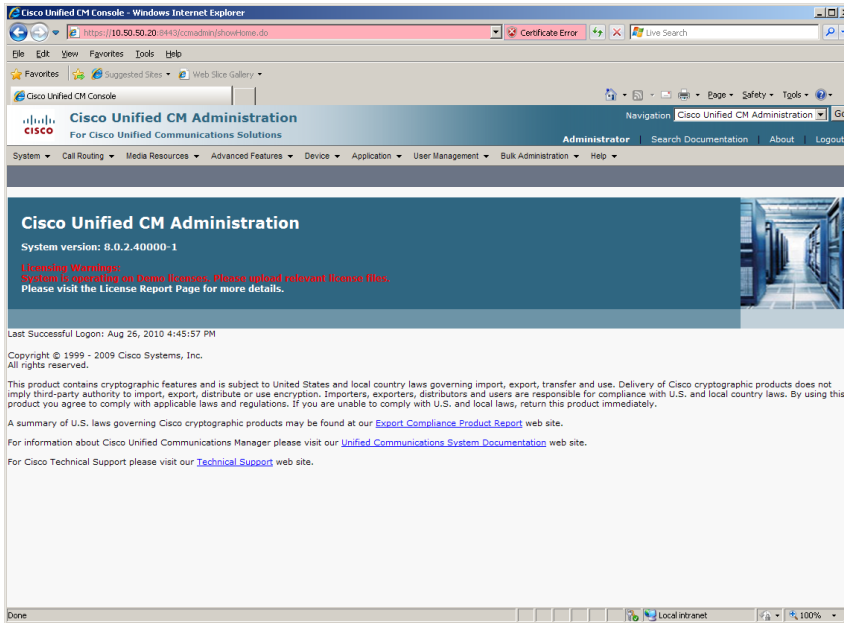
Press Upload License File.



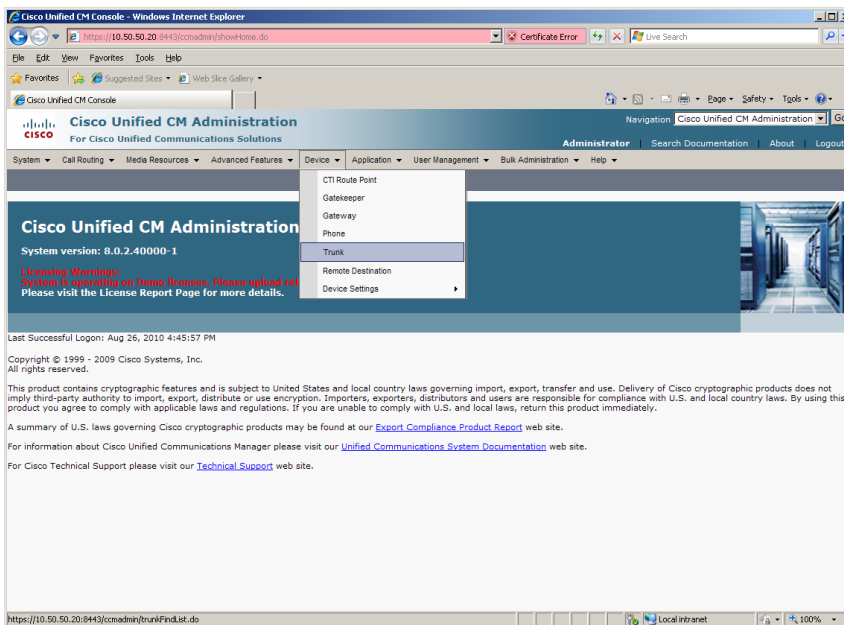
Press Browse and select the License File provide by Cisco. Then press Upload.

4.9.3 Configure SR140 Trunk

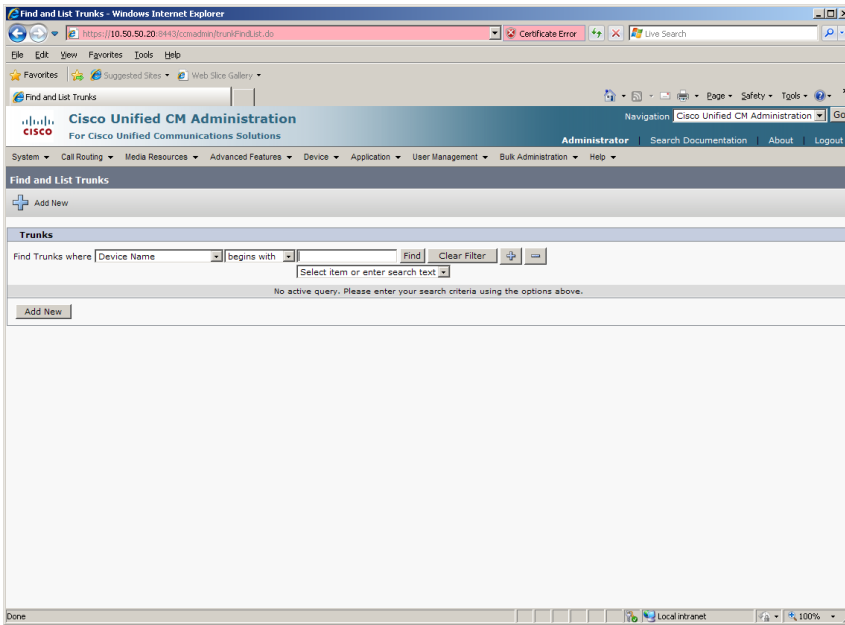
Using a web browser, log into the Cisco Unified CM Administration screen.



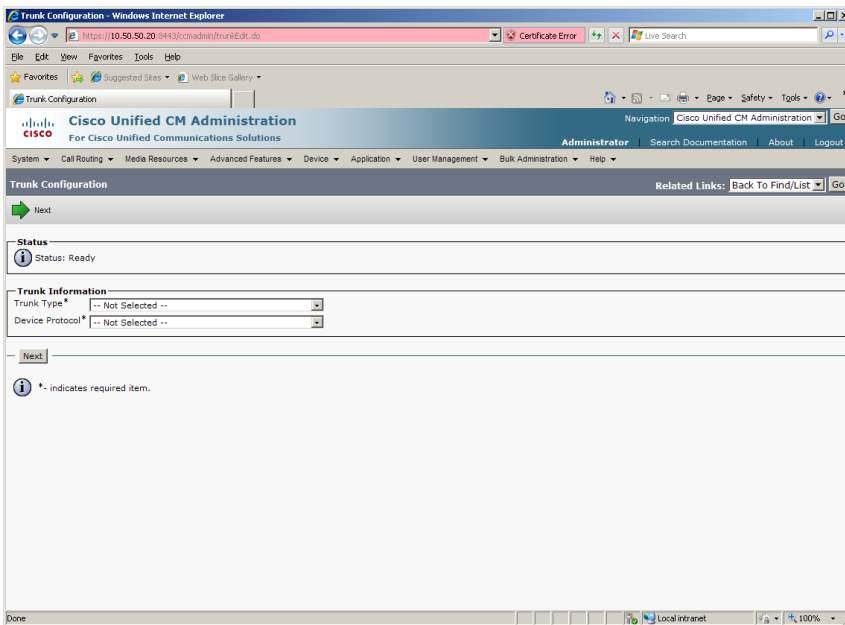
From the menu select Device | Trunk.



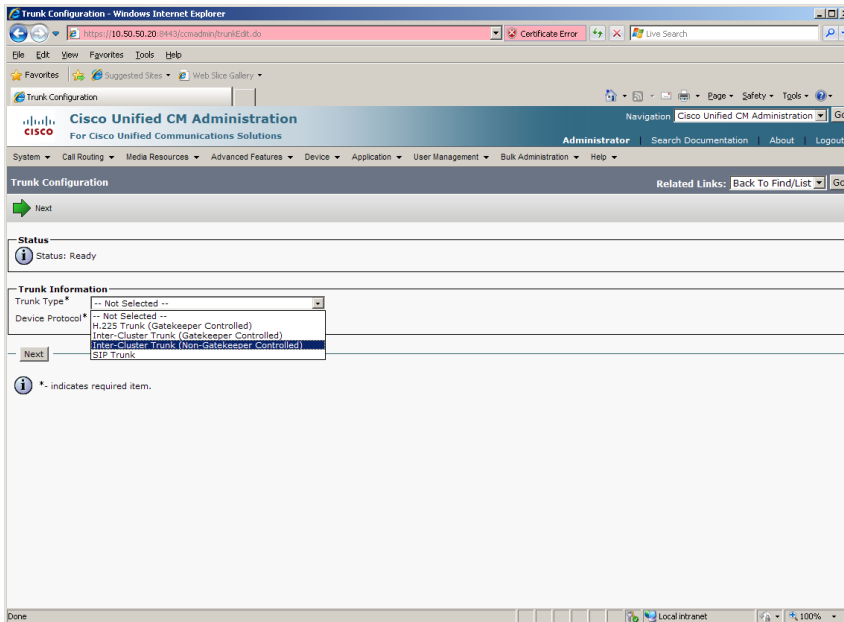
The following screen will appear.



Press Add New to add a new H.323 Trunk.



Select Inter-Cluster Trunk (Non-Gatekeeper Controlled) for the Trunk Type.

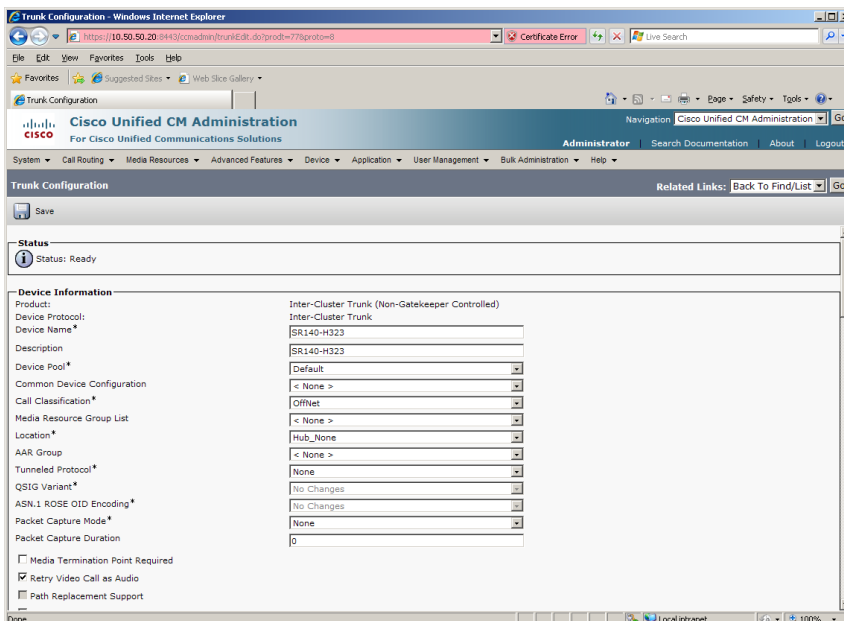


Select Inter-Cluster Trunk for the Device Protocol and press Next.

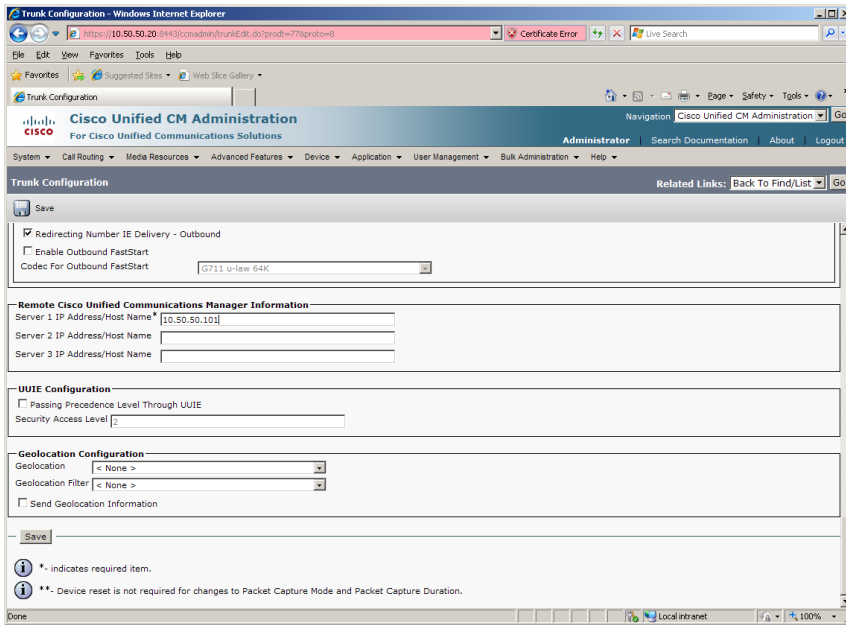
Set the following:

- Device Name: SR140-H323
- Device Description: SR140-H323
- Device Pool: Default
- Call Classification: OffNet
- Server 1 IP Address/Host Name: 10.50.50.101

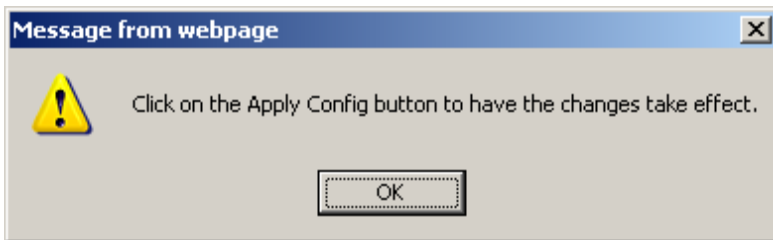
Note: Server 1 IP Address/Host Name is the IP address of the SR140.



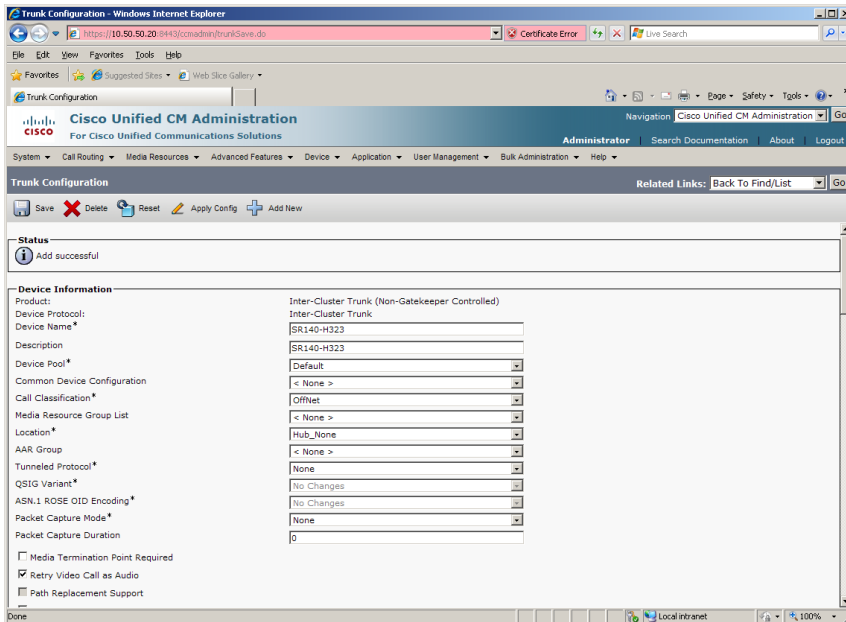
Dialogic® Brooktrout® SR140 Fax Software with Cisco Unified Communications Manager 8.0
Installation and Configuration Integration Note



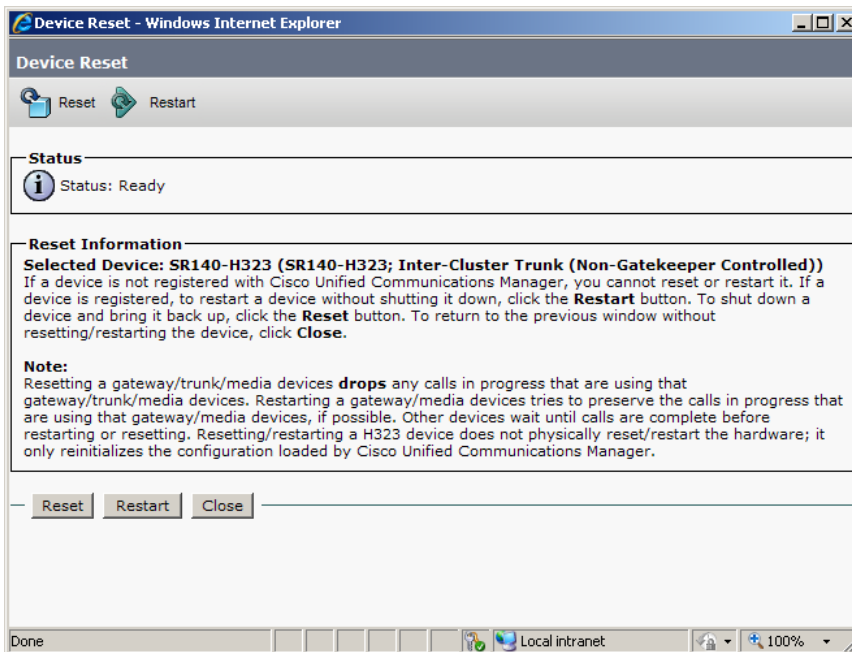
Press Save.



Press OK.



Press Reset.

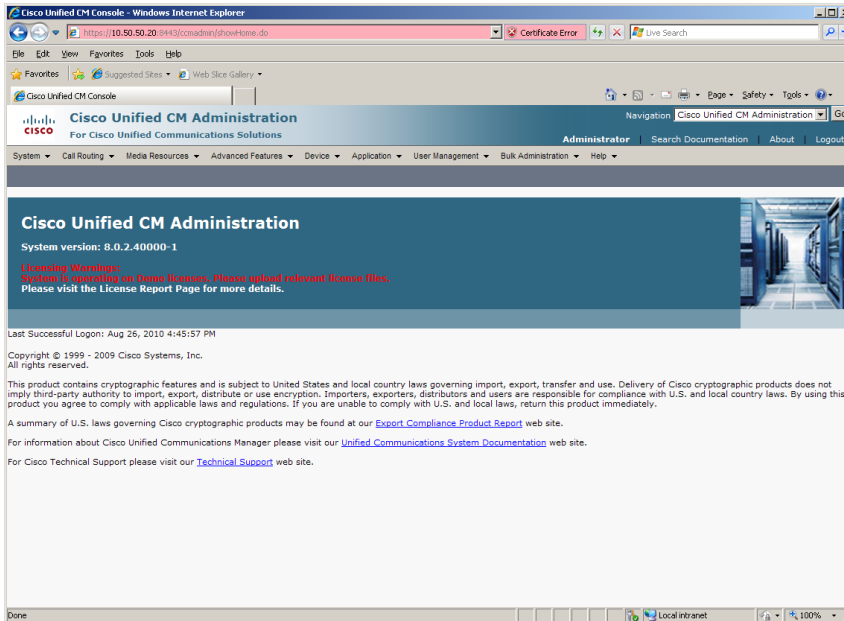


Press Restart then press Close.

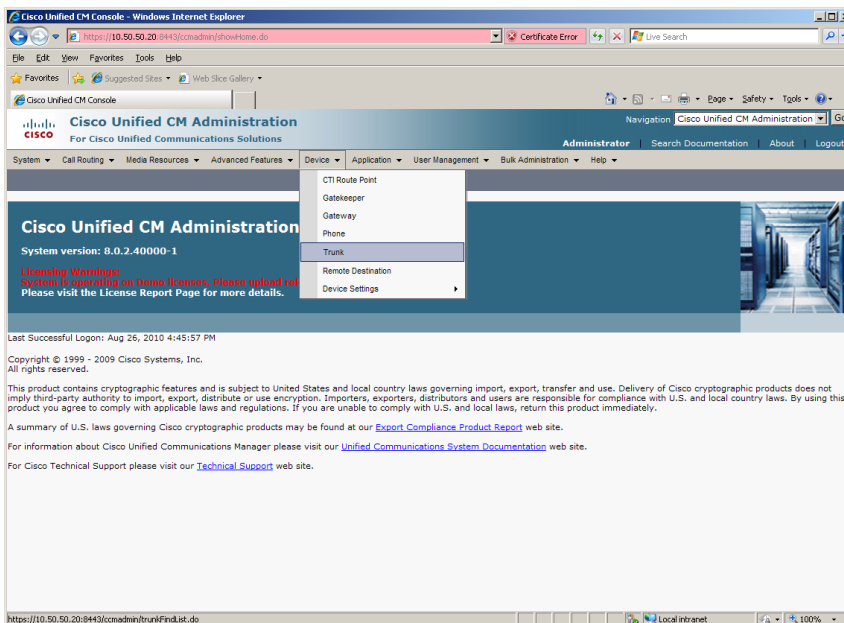
4.9.4 Configure H.323 Gateway Trunk

The following section describes how to add a gateway to the call manager as an H.323 trunk. If you have already added an H.323 trunk or H.323 gateway to your call manager, you may skip this section.

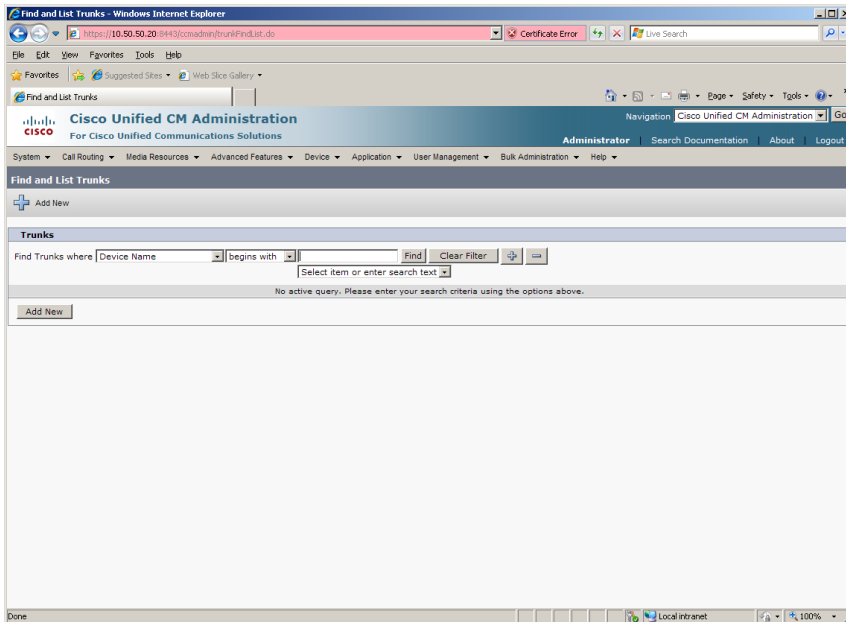
Using a web browser, log into the Cisco Unified CM Administration screen.



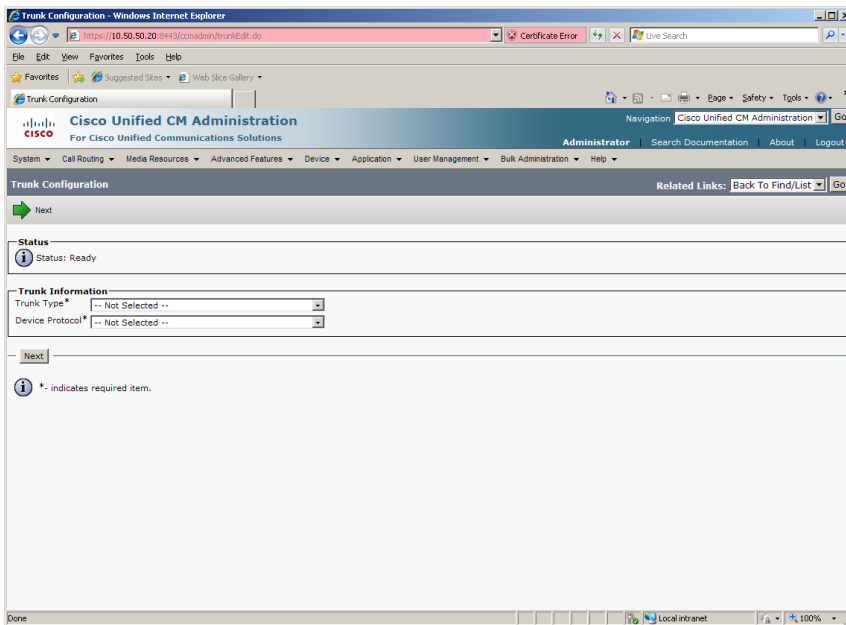
From the menu select Device | Trunk.



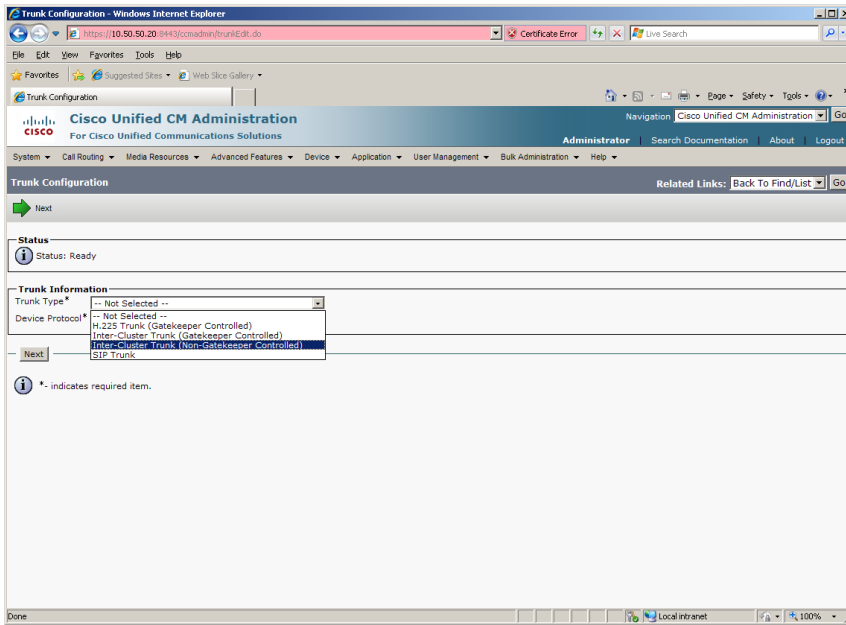
The following screen will appear.



Press Add New to add a new H.323 Trunk.



Select Inter-Cluster Trunk (Non-Gatekeeper Controlled) for the Trunk Type.

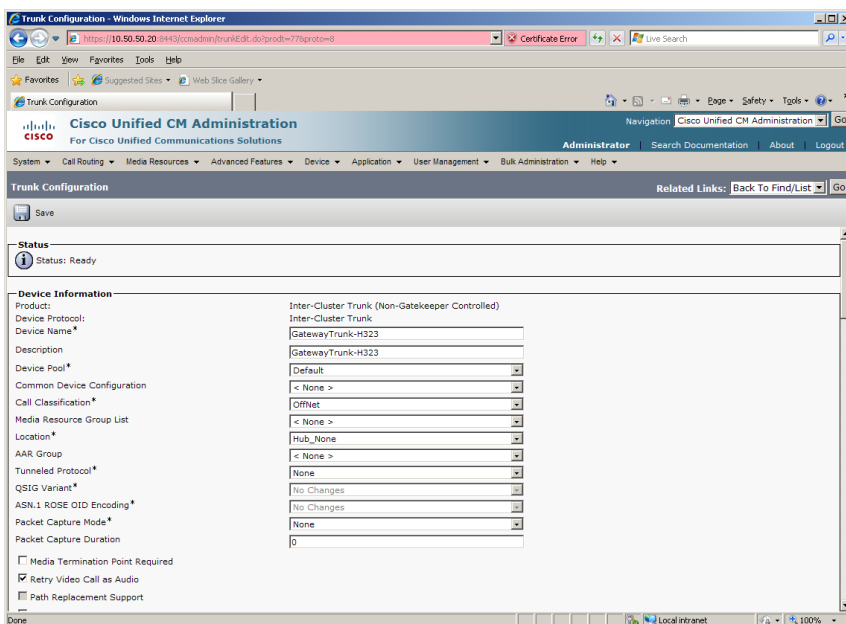


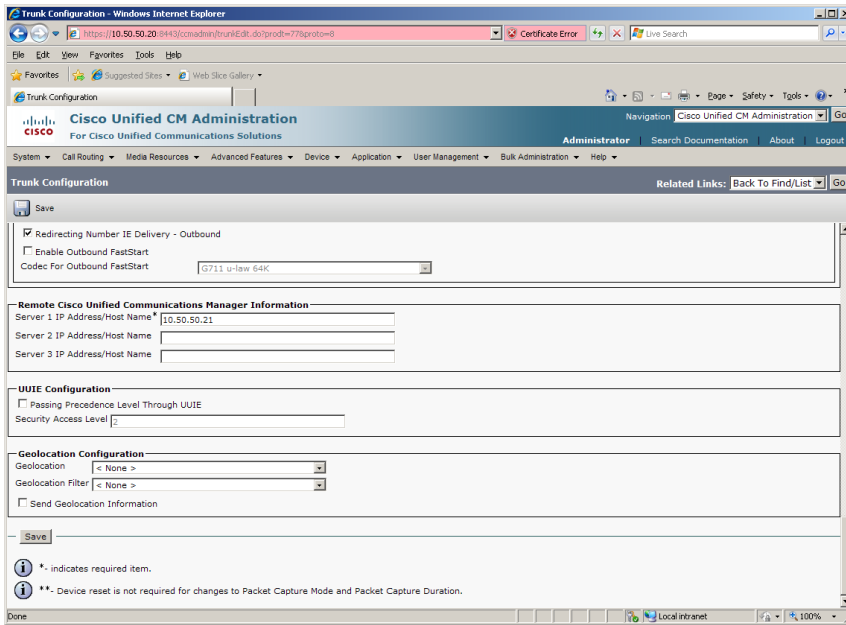
Select Inter-Cluster Trunk for the Device Protocol and press Next.

Set the following:

- Device Name: GatewayTrunk-H323
- Device Description: GatewayTrunk-H323
- Device Pool: Default
- Call Classification: OffNet
- Server 1 IP Address/Host Name: 10.50.50.21

Note: Server 1 IP Address/Host Name is the IP address of the Gateway.

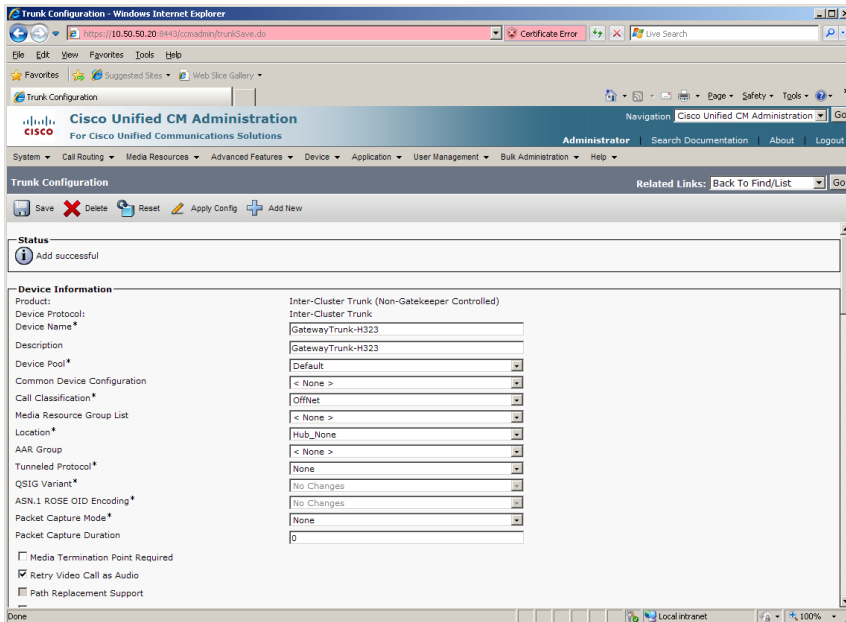




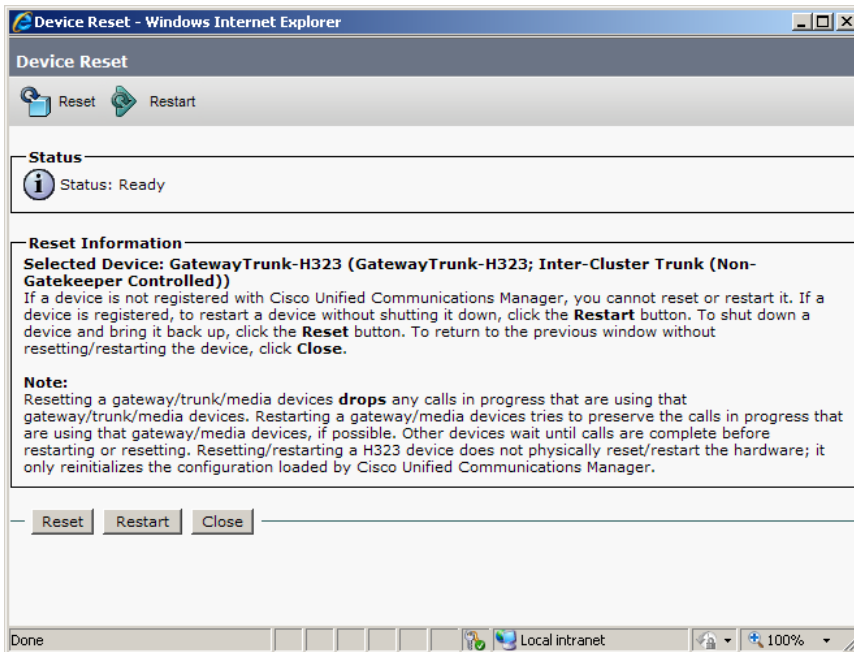
Press Save.



Press OK.



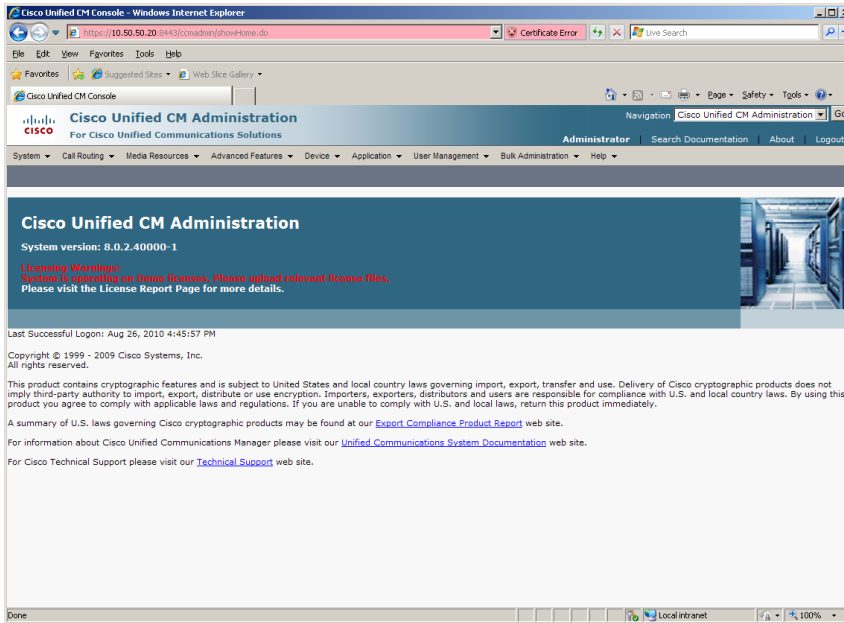
Press Reset.



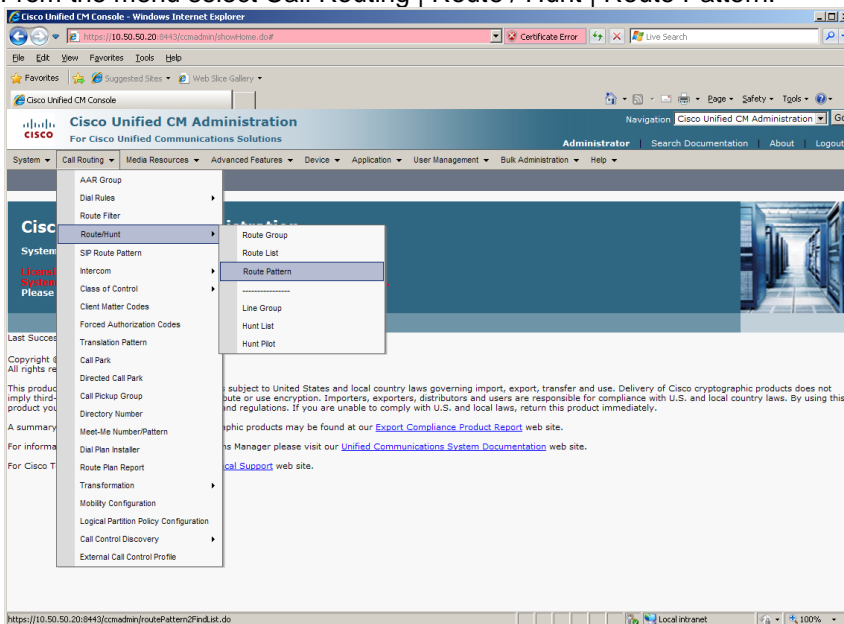
Press Restart then press Close.

4.9.5 Configure Call Routing

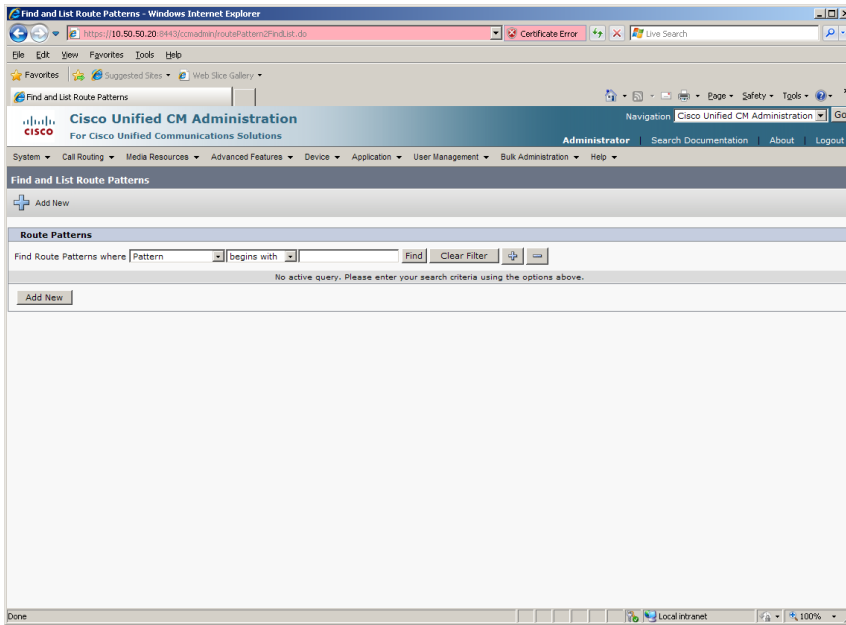
Using a web browser, log into the Cisco Unified CM Administration screen.



From the menu select Call Routing | Route / Hunt | Route Pattern.



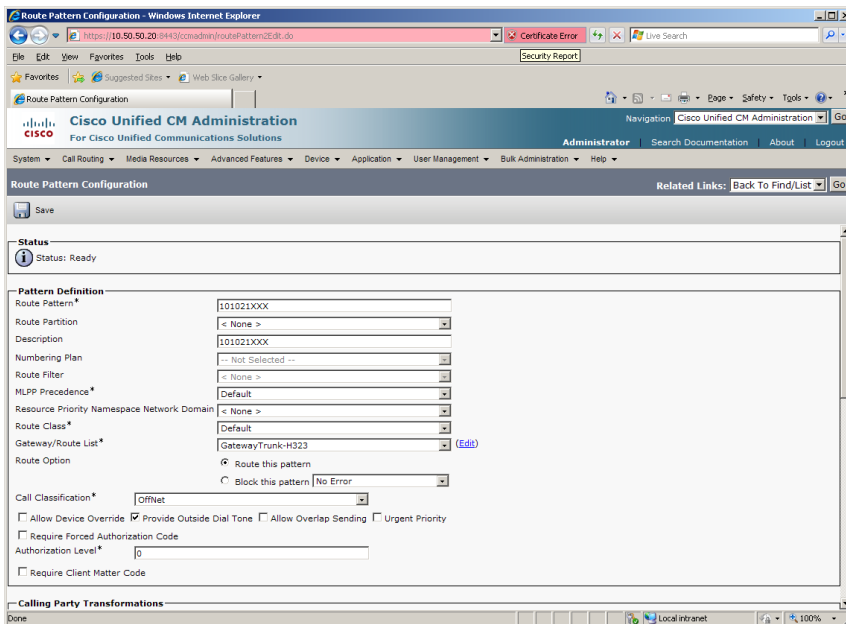
The following screen will appear.



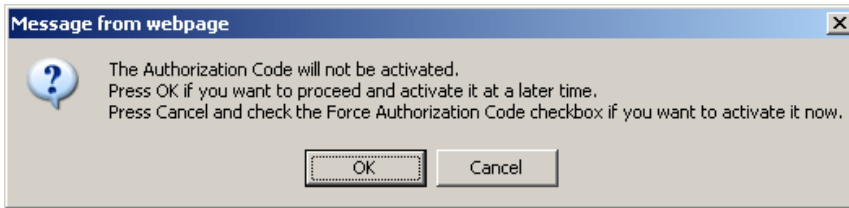
Press Add New.

Set the following:

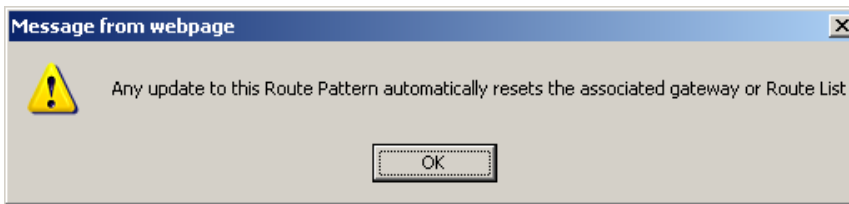
- Route Pattern: 101021XXX
- Description: 101021XXX
- Gateway/Route List: GatewayTrunk-H323
- Call Classification: OffNet



Press Save. The following appears because you did not require a Forced Authorization Code.



Press OK.



Press OK.

Repeat the same steps and set the following to route to the SR140:

- Route Pattern: 101101XXX
- Description: 101101XXX
- Gateway/Route List: SR140-H323
- Call Classification: OffNet

5 H.323 / MGCP Configuration Details

5.1 Cisco Unified Communication Manager 8.0 – H.323 / MGCP Configuration

Vendor	Cisco
Model	Cisco Unified Communication Manager
Software Version	8.0.2.40000-1
Protocol to SR140	H.323
Protocol to Gateway	MGCP

5.2 Cisco 2800 Gateway

Vendor	Cisco
Model	Cisco 2800 Integrated Service Router
Software Version	Cisco IOS Software, 2800 Software (C2800NM-ADVENTERPRISEK9_IVS-M), Version 12.4(25c), RELEASE SOFTWARE (fc2)
PSTN Device	Dialogic® Brooktrout® TR1034 Fax Board
Protocol to PSTN Device	T1 Robbed Bit Signaling with E&M Wink Start signal protocol
IP Device	Dialogic® Brooktrout® SR140 Fax Software and Cisco CUCM 8.0
Protocol to CUCM	MGCP

5.3 Dialogic® Brooktrout® SR140 Fax Software

Vendor	<i>Dialogic</i>
Model	<i>Dialogic® Brooktrout® SR140 Fax Software</i>
Software Version	<i>SDK 6.3.0</i>
Protocol to CUCM	<i>H.323</i>
callctrl.cfg file	<i>SDK 6.3.0 –All defaults</i>

5.4 Dialogic® Brooktrout® TR1034 Fax Board

Vendor	<i>Dialogic</i>
PSTN Device	<i>Dialogic® Brooktrout® TR1034 Fax Board</i>
Software Version	<i>SDK 6.3.0</i>
Protocol to GW	<i>T1 Robbed Bit Signaling with E&M Wink Start signal protocol</i>
callctrl.cfg file	<i>All defaults</i>

5.5 Network System Configuration – H.323 / MGCP Configuration

The diagram below details the sample configuration used in connection with the H.323 / MGCP Configuration.

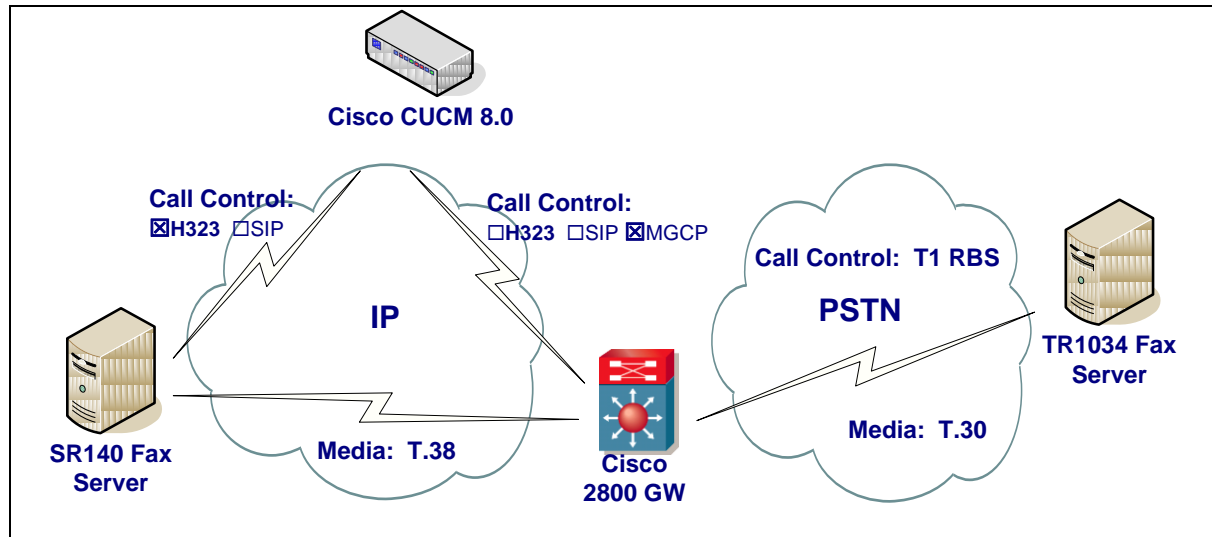


Diagram Notes:

- SR140 Fax Server = Fax Server including Dialogic® Brooktrout® SR140 Fax Software and third party fax application
- TR1034 Fax Server = Fax Server including Dialogic® Brooktrout® TR1034 Fax Board and third party fax application

5.5.1 Network Addresses

Device #	Device Make, Model, and Description	Device IP Address
1	Dialogic® Brooktrout® SR140	10.50.50.101
2	Cisco Unified Communication Manager 8.0	10.50.50.20
3	Cisco 2800 Integrated Service Router	10.50.50.21

5.5.2 Dialing Plan Overview

To call the SR140 from a POTS phone, dial 101101xxx, where x is a number between 0 and 9.

POTS(dial 101101xxx)—T1 RBS—>
Gateway(dial 101101xxx@10.50.50.20)—MGCP—>
CUCM8.0(dial 101101xxx@10.50.50.101)—H.323—>SR140

To call the POTS lines of the Gateway, dial 301021xxx@10.50.50.20, where x is a number between 0 and 9, from the SR140.

SR140(dial 301021xxx@10.50.50.20)—H.323—>
CUCM8.0(dial 301021xxx@10.50.50.21)—MGCP—>
Gateway(dial 301021xxx)—T1 RBS—>POTS

5.6 Dialogic® Brooktrout® SR140 Fax Software Setup Notes

For the sample test configuration, the SR140 was configured using the default values, consult the Dialogic® Brooktrout® Fax Products Installation and Configuration Guide for details.

The Installation and Configuration Guides are available from the site:

<http://www.dialogic.com/manuals/brooktrout/default.htm>

Note: DHCP cannot be used.

5.7 Dialogic® Brooktrout® TR1034 Fax PSTN Setup Notes

For the sample test configuration, the TR1034 was configured using the default values, consult the Dialogic® Brooktrout® Fax Products Installation and Configuration Guide for details.

5.8 Cisco 2800 Gateway Setup Notes

For the sample test configuration, the Cisco 2800 Gateway was configured the Cisco IOS Command-Line Interface. The specific items configured include:

- Configure line card interface
- Configure MGCP
- Configure Dial-Peers

5.8.1 Configure line card interface

The following lines will allow T1 Robbed Bit Signaling with E&M Wink Start signal protocol.

```
controller T1 0/0/0
    framing esf
    clock source internal
    linecode b8zs
    cablelength short 133
    ds0-group 0 timeslots 1-24 type e&m-wink-start
    description E&M Wink Start T1-RBS
```

Note: the ds0-group line must NOT contain dtmf dnis when doing Wink Start and MGCP.

5.8.2 Configure MGCP

The following will allow MGCP calls.

```
ccm-manager mgcp
ccm-manager music-on-hold
ccm-manager config server 10.50.50.20
!
mgcp
mgcp call-agent 10.50.50.20 2427 service-type mgcp version 0.1
mgcp default-package fxr-package
!
mgcp profile default
```

Note: 10.50.50.20 is the IP address of the CUCM.

Note: Verify that **mgcp fax t38 inhibit** is not present since it disables T.38

5.8.3 Configure Dial-Peers - POTS

With MGCP the dial-peers are configured on CUCM. The POTS port controlled by MGCP must be configured as follows:

```
dial-peer voice 301021000 pots
service mgcpapp
port 0/0/0:0
```

After configuring CUCM verify that the Gateway is registered with the command **sh ccm-manager**.

```
firestar#sh ccm-manager
MGCP Domain Name: firestar.dialogic.com
Priority      Status      Host
=====
Primary      Registered  10.50.50.20
First Backup  None
Second Backup None
```

```
Current active Call Manager: 10.50.50.20
Backhaul/Redundant link port: 2428
Failover Interval:          30 seconds
Keepalive Interval:         15 seconds
Last keepalive sent:        12:46:14 PCTime Aug 31 2010 (elapsed time: 00:00:05)
```


Last MGCP traffic time: 12:46:14 PCTime Aug 31 2010 (elapsed time: 00:00:05)
Last failover time: None
Last switchback time: None
Switchback mode: Graceful
MGCP Fallback mode: Not Selected
Last MGCP Fallback start time: None
Last MGCP Fallback end time: None
MGCP Download Tones: Disabled
TFTP retry count to shut Ports: 2

Configuration Error History:
FAX mode: cisco

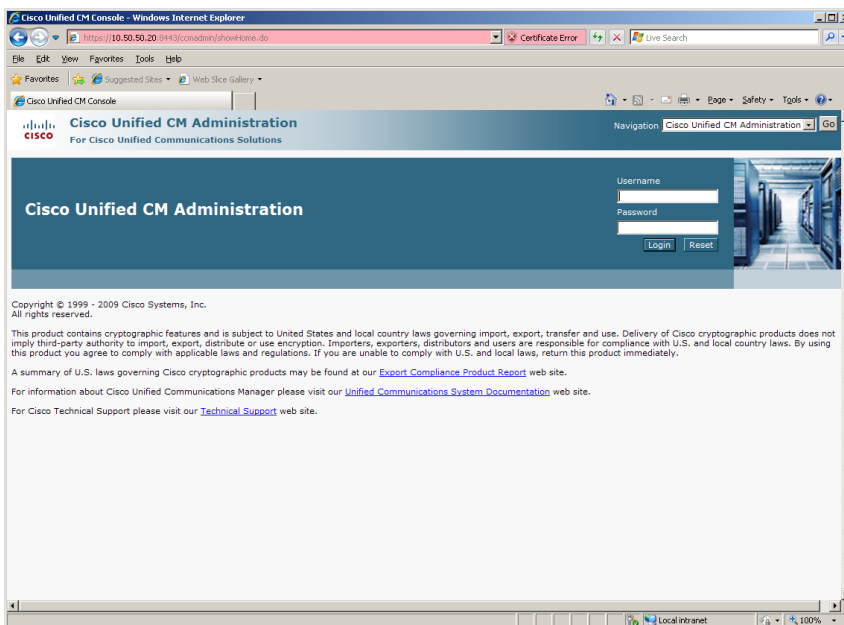
5.9 CUCM 8.0 Setup Notes – H.323 / MGCP Configuration

The CUCM 8.0 configuration values that were used in the sample configuration involve configuring the following items:

- Configure Service Activation – refer to [section 4.9.1](#)
- Configure License – refer to [section 4.9.2](#)
- Configure SR140 Trunk – refer to [section 4.9.3](#)
- Configure Gateway Trunk
- Configure Call Routing

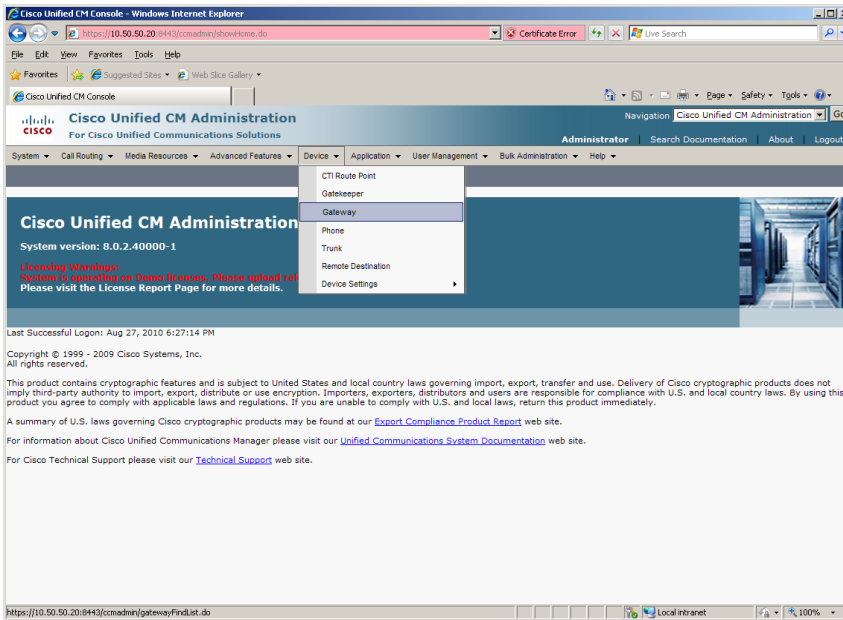
5.9.1 Configure Gateway Trunk

Using a web browser, log into the Cisco Unified CM Administration screen.

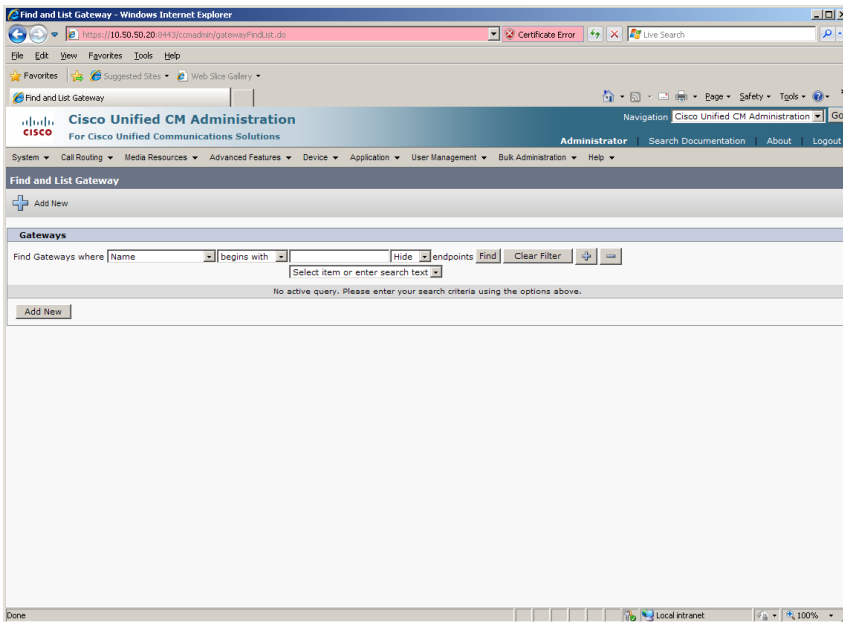


From the menu select Device | Gateway.

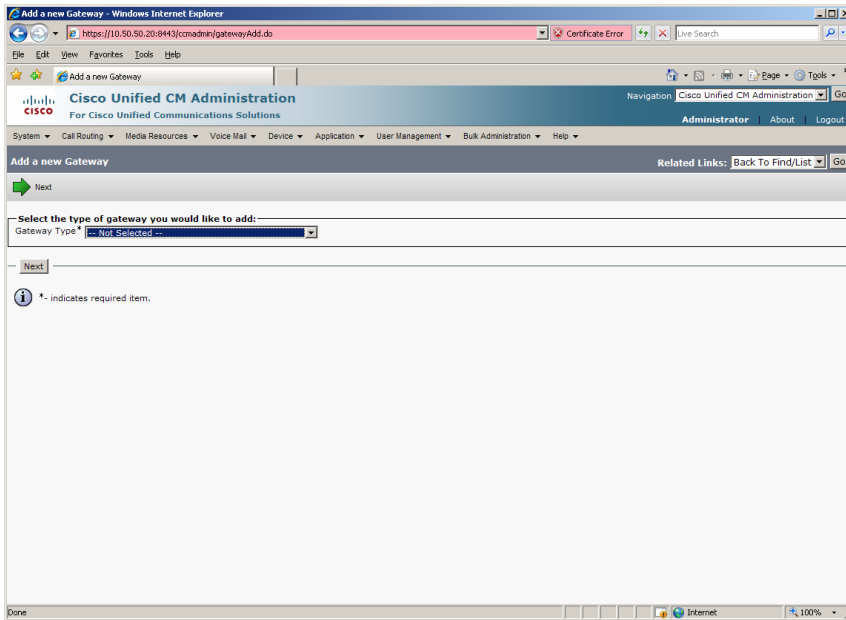
Dialogic® Brooktrout® SR140 Fax Software with Cisco Unified Communications Manager 8.0
Installation and Configuration Integration Note



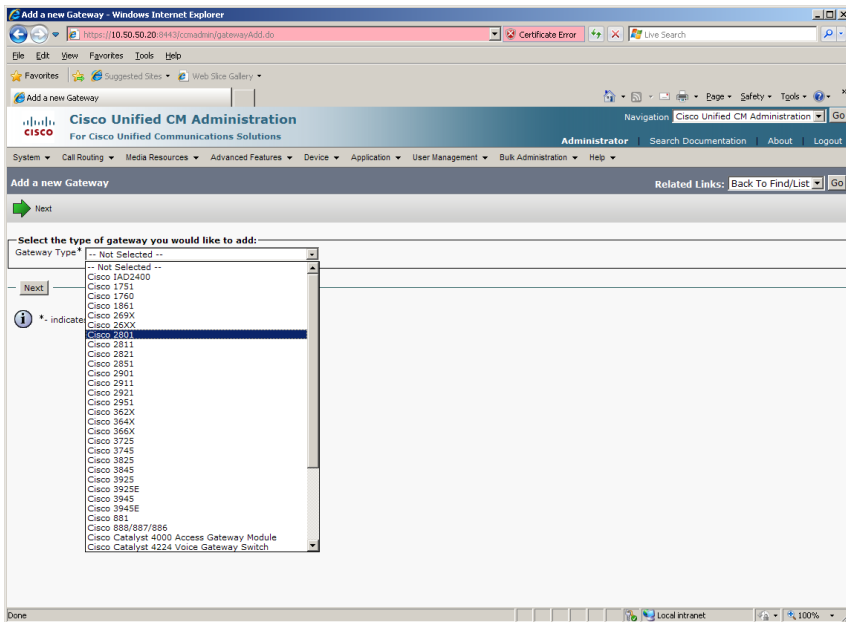
The following screen will appear.



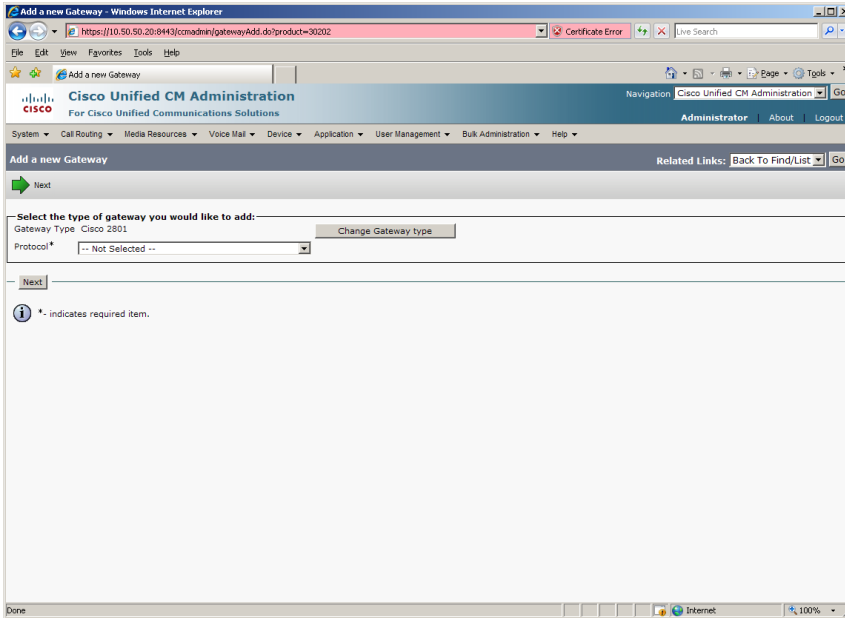
Press Add New to add a new MGCP Trunk.



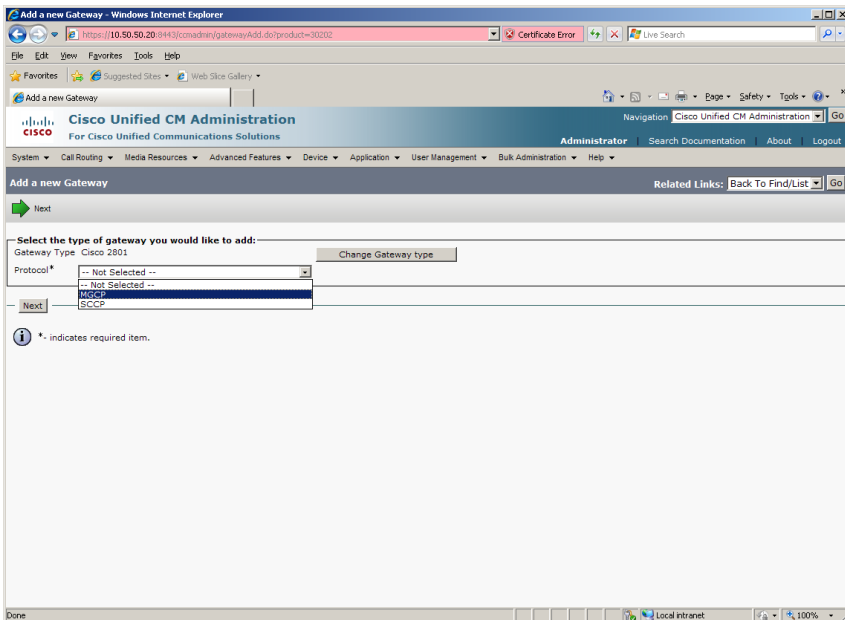
Select Cisco 2801 for the Gateway Type.



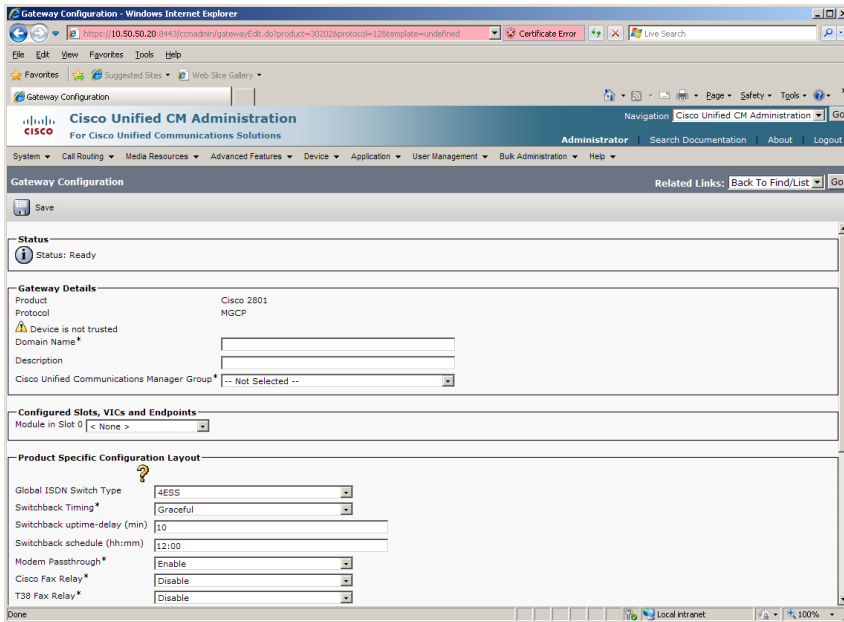
Press Next.



Select MGCP for the Protocol.

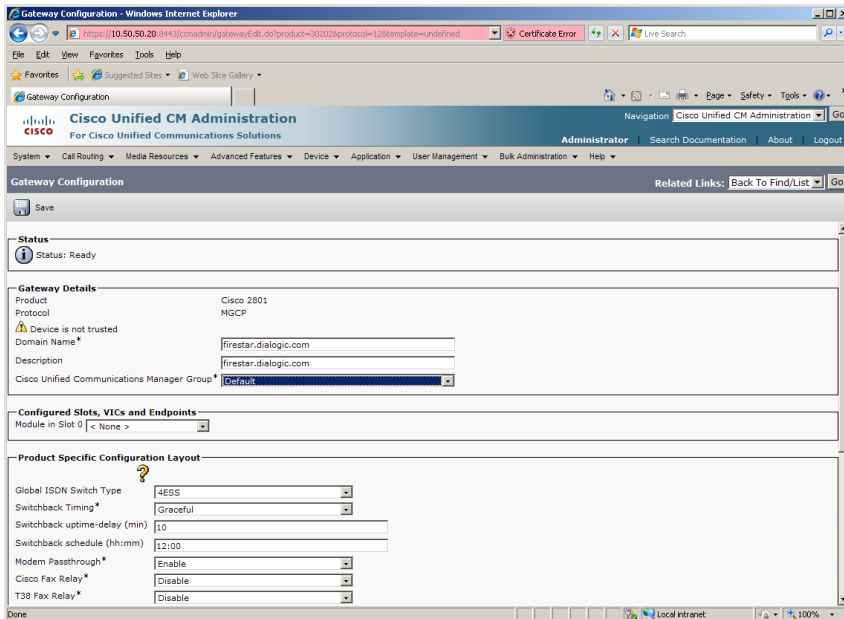


Press Next.



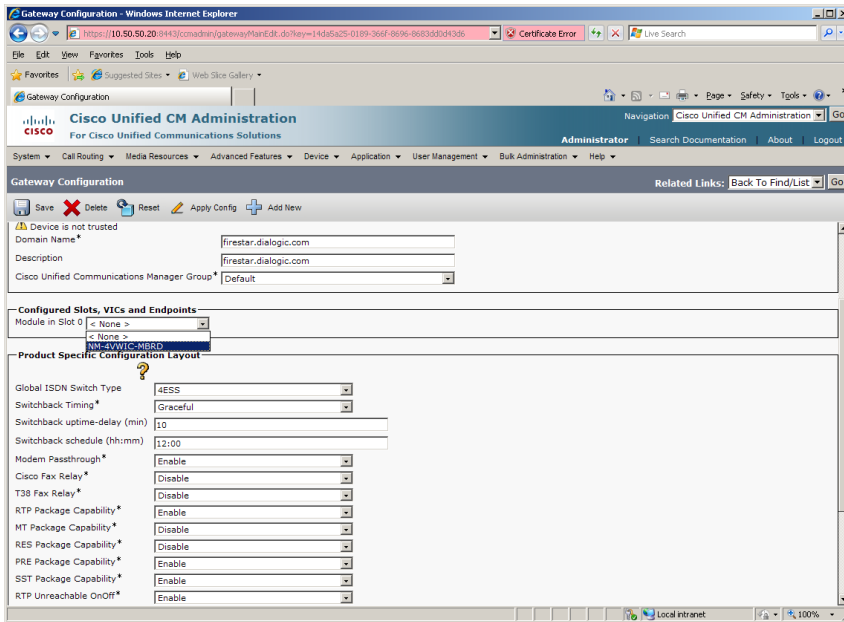
Set the following:

- Domain Name: firestar.dialogic.com
- Description: firestar.dialogic.com
- Cisco Unified Communications Manager Group: Default

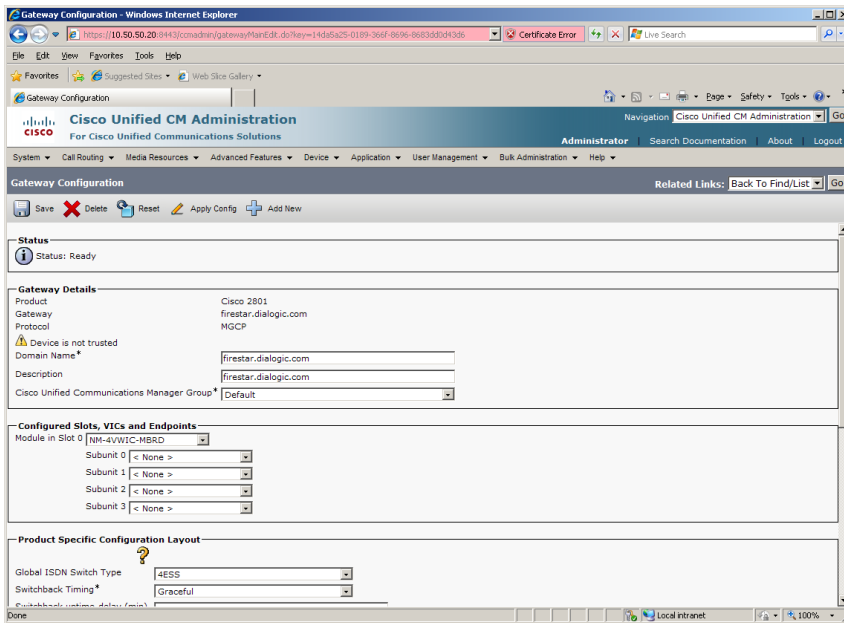


Select NM-4VVIC-MBRD for the Module in Slot 0.

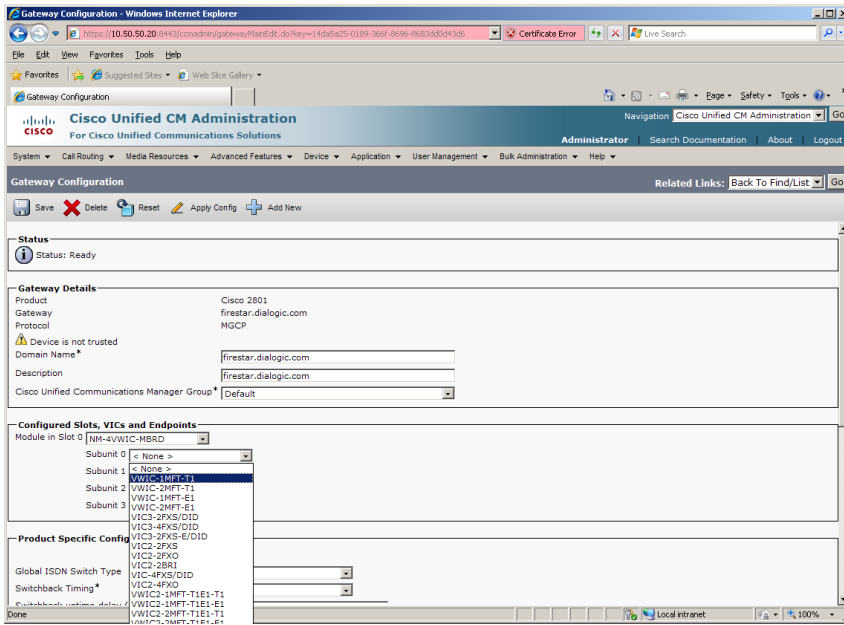
Dialogic® Brooktrout® SR140 Fax Software with Cisco Unified Communications Manager 8.0
Installation and Configuration Integration Note



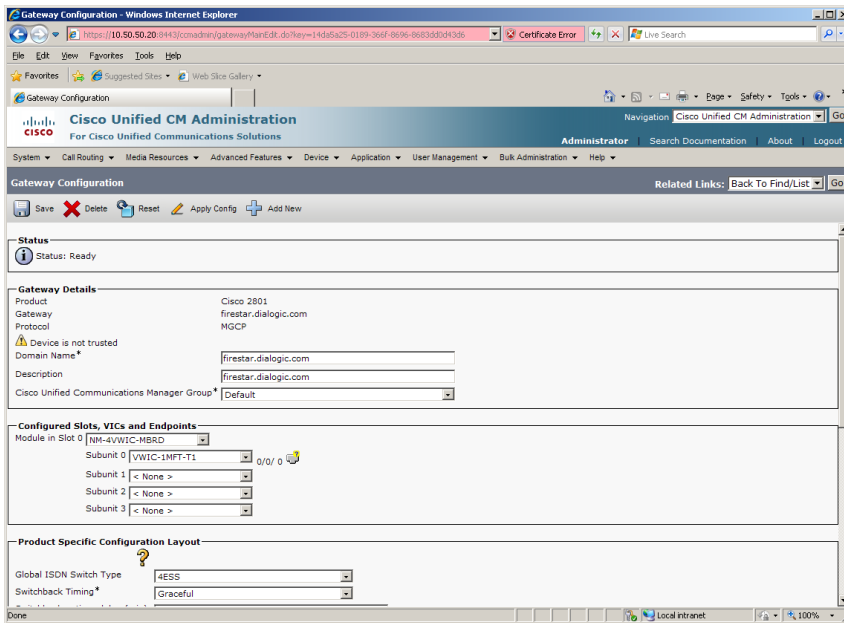
Press Save.



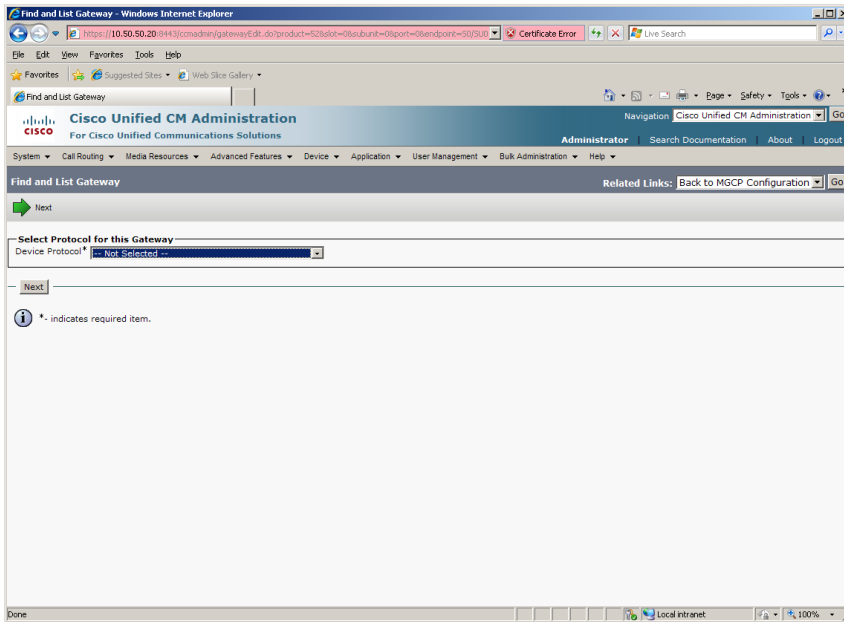
Select VVIC-1MFT-T1 for Subunit 0.



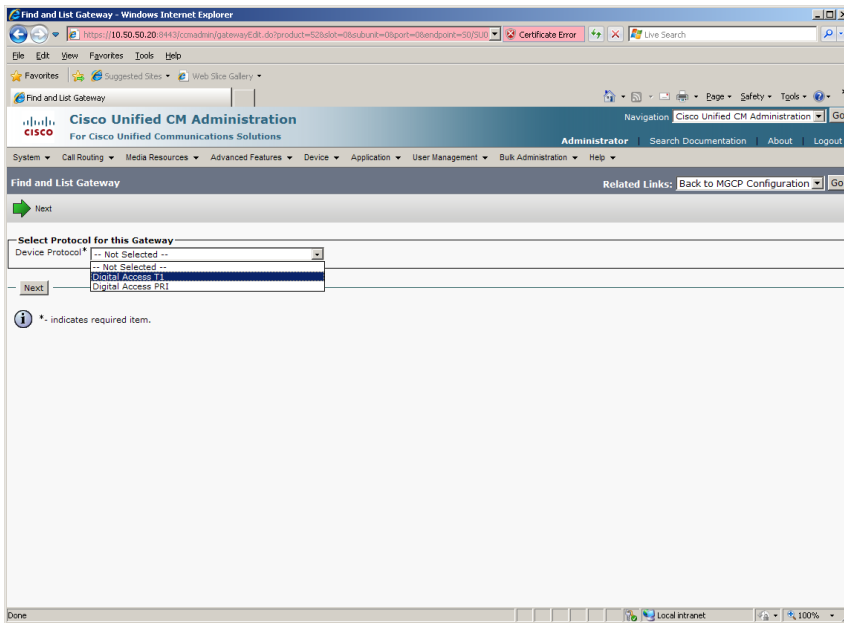
Press Save.



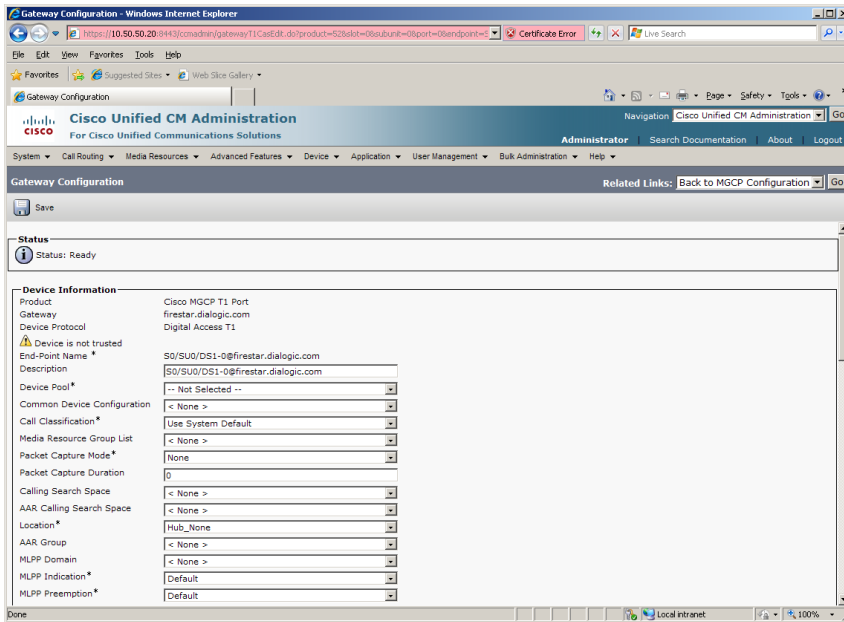
Press the port icon with the question mark next to the Subunit 0.



Select Digital Access T1 for the Device Protocol.

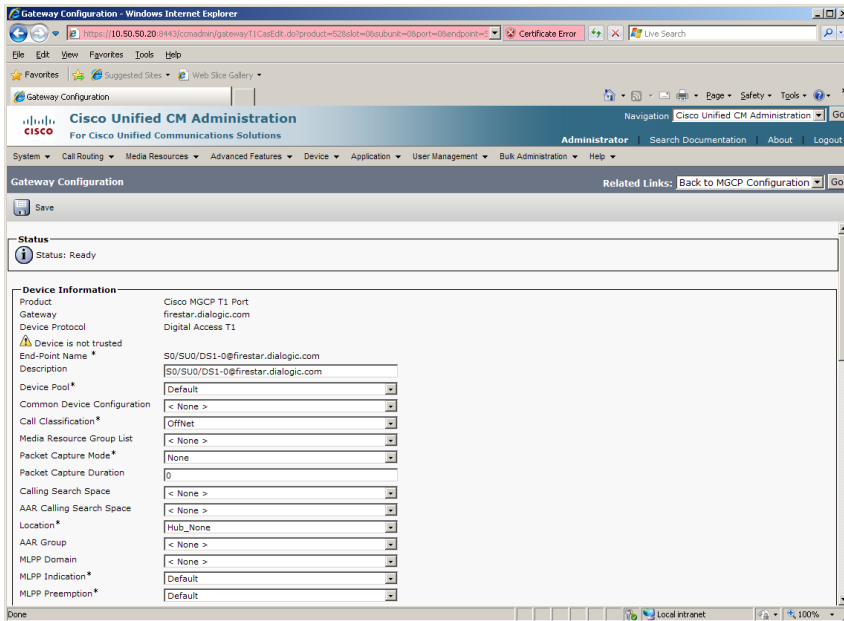


Press Next.

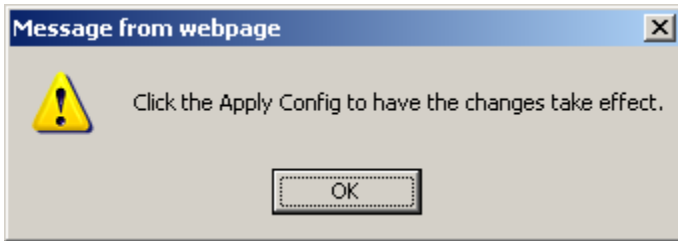


Set the following:

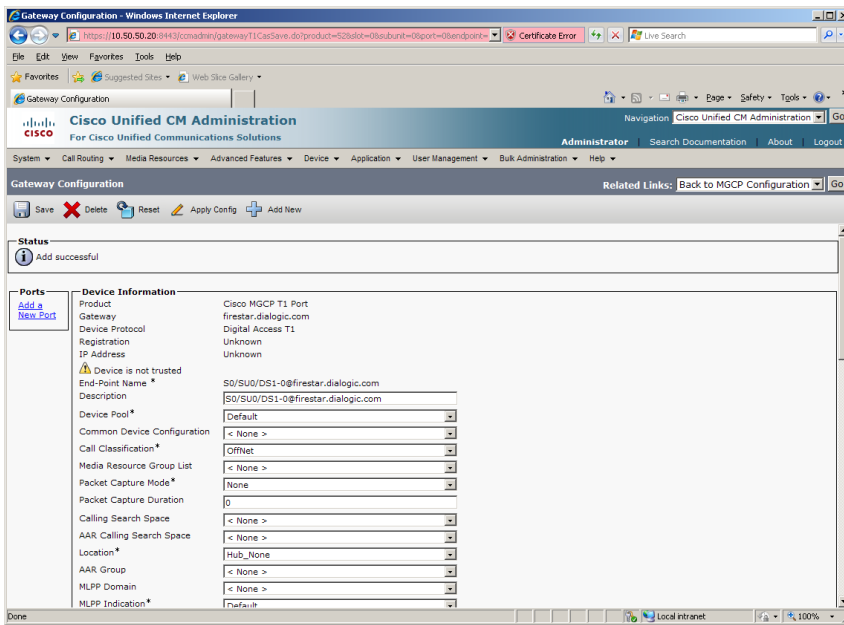
- Device Pool: Default
- Call Classification: OffNet



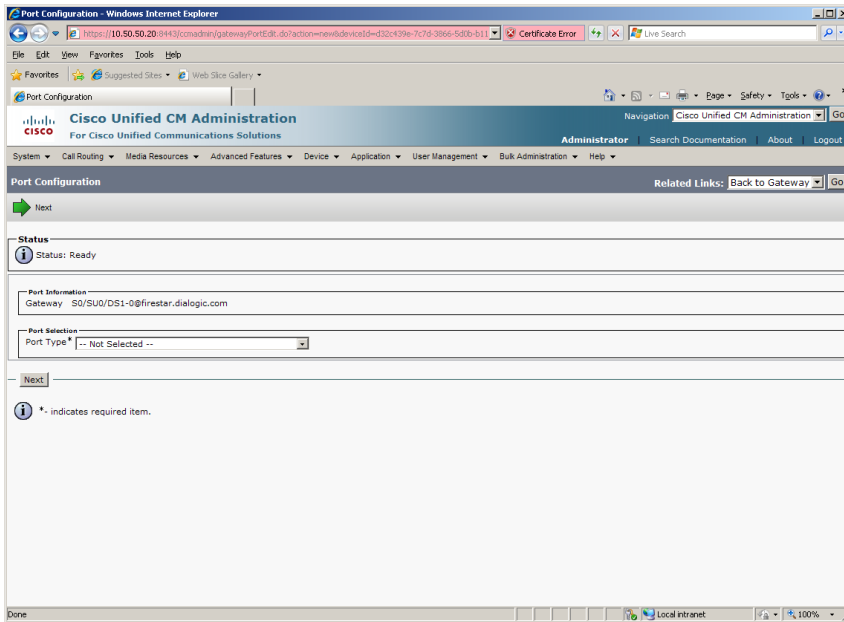
Press Save.



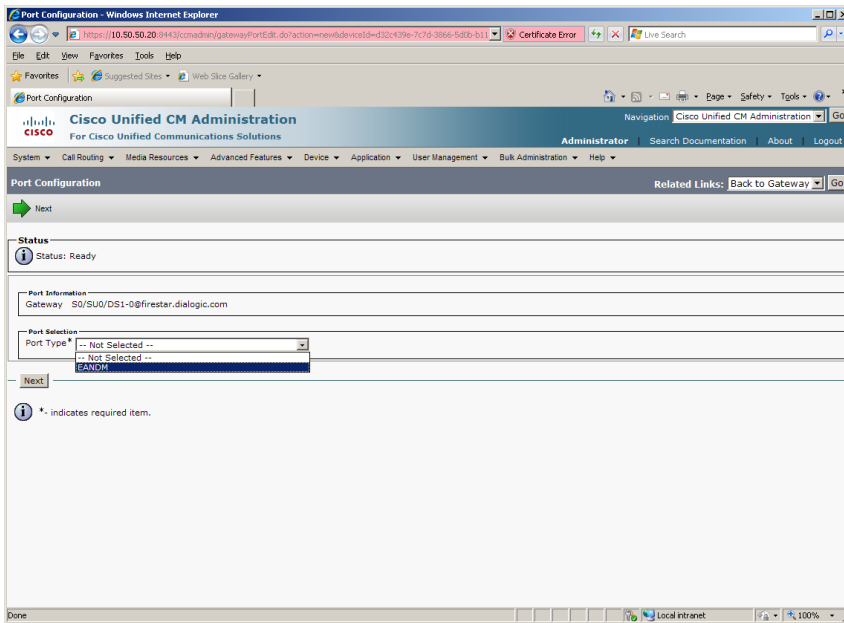
Press OK.



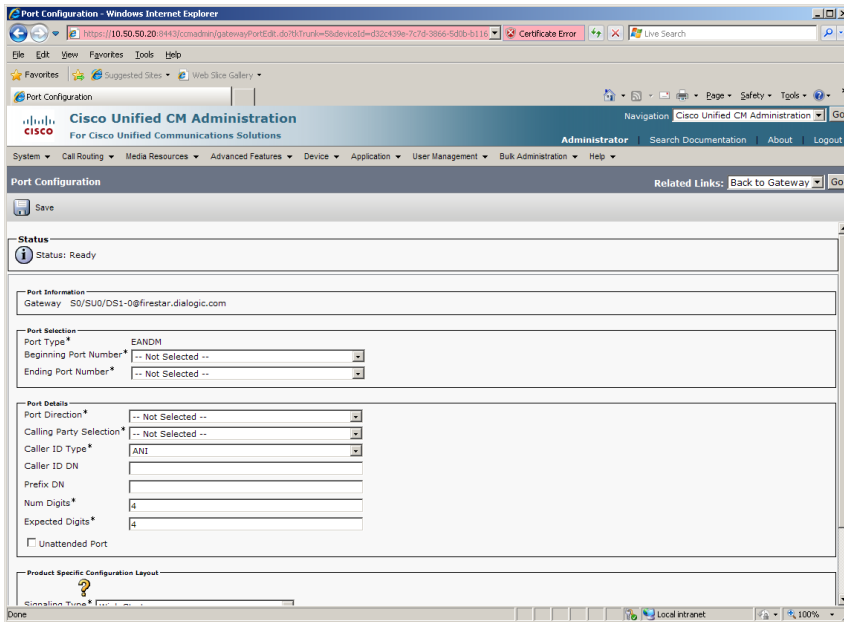
Press Add a New Port on the Ports section.



Select EANDM for the Port Type.

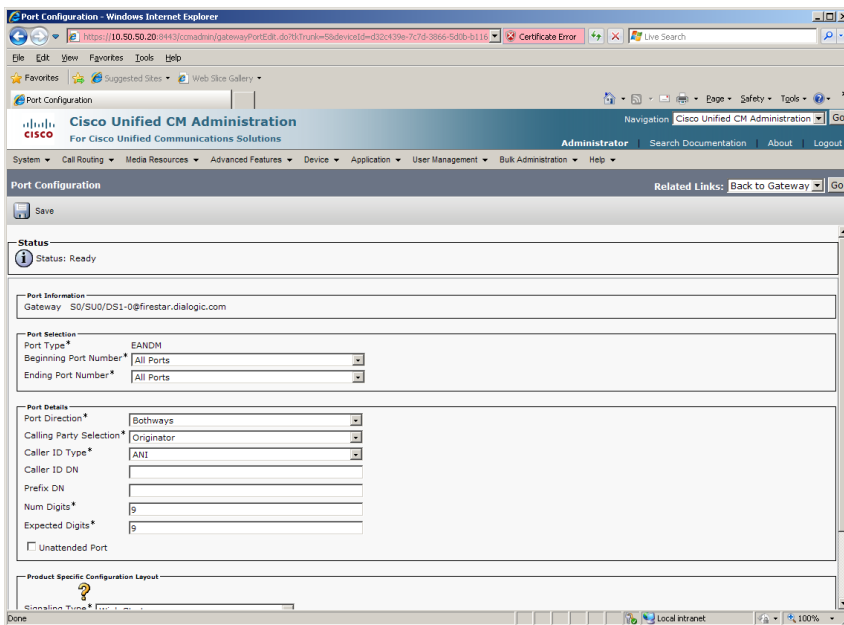


Press Next.



Set the following:

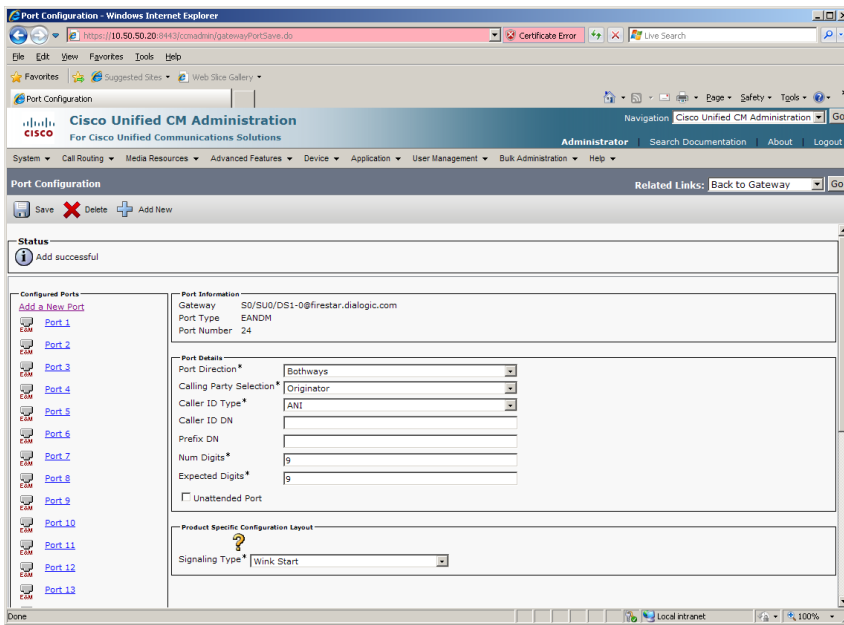
- Beginning Port Number: All Ports
- Ending Port Number: All Ports
- Port Direction: Bothways
- Calling Party Selection: Originator
- Num Digits: 9
- Expected Digits:9



Press Save.

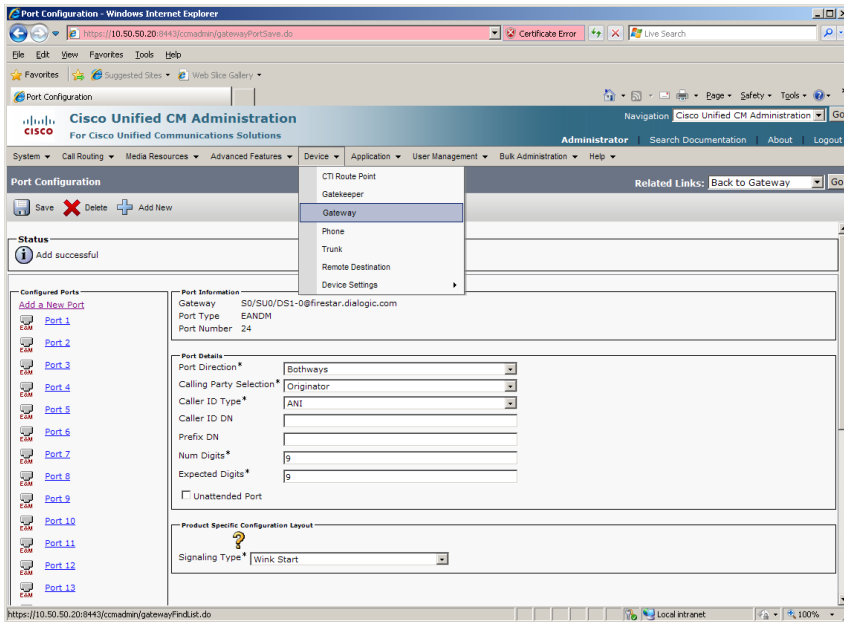


Press OK.

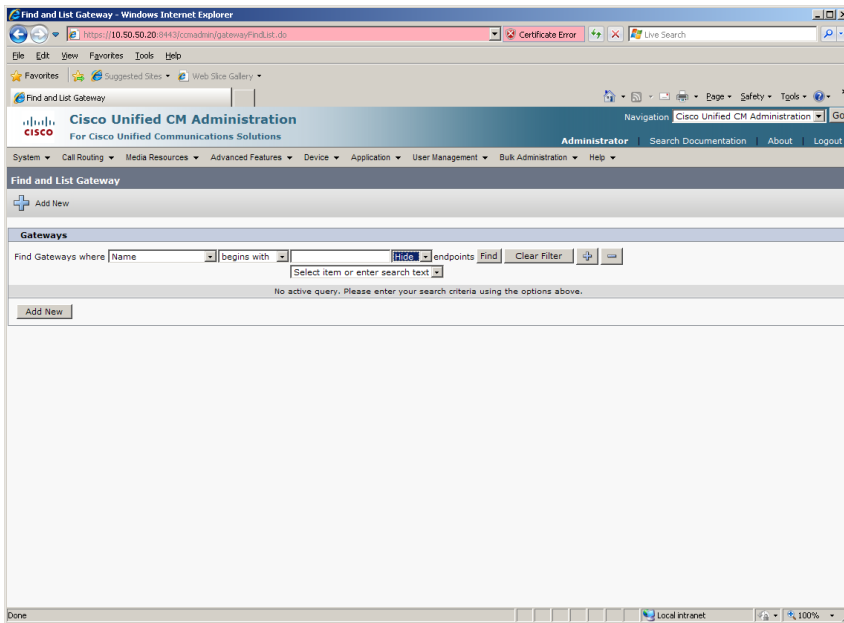


To verify CUCM is registered with the gateway, from the menu select Device | Gateway.

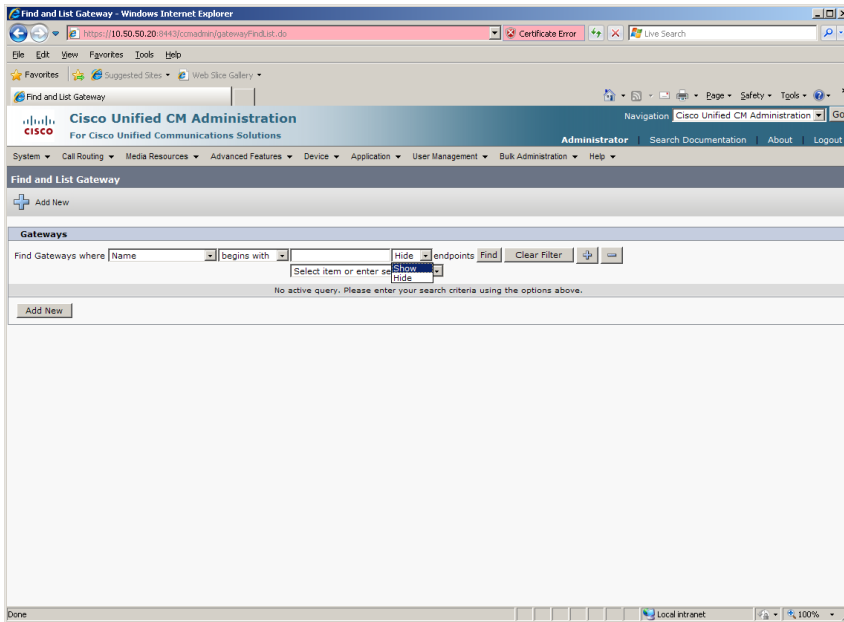
Dialogic® Brooktrout® SR140 Fax Software with Cisco Unified Communications Manager 8.0
Installation and Configuration Integration Note



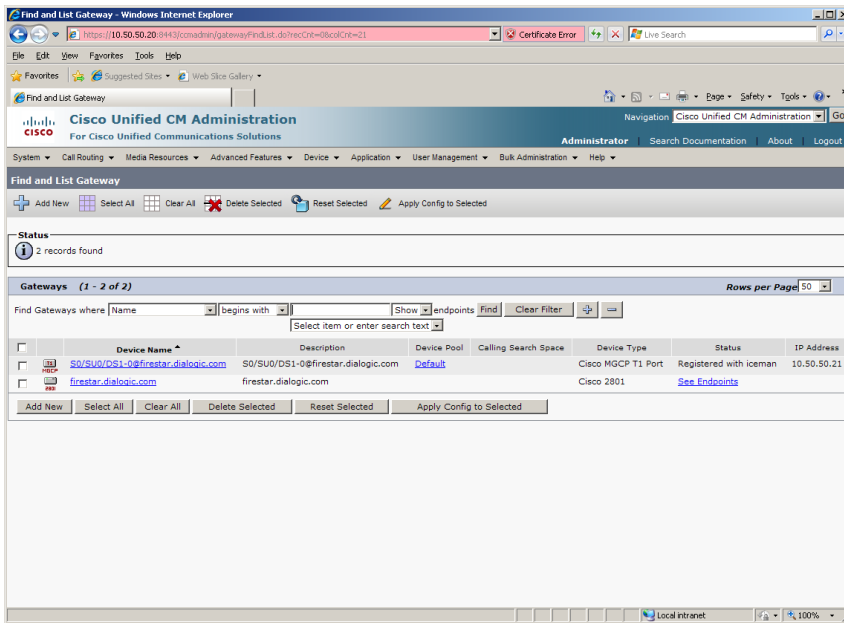
The following screen appears.



Change Hide to Show on the Find Gateways where.



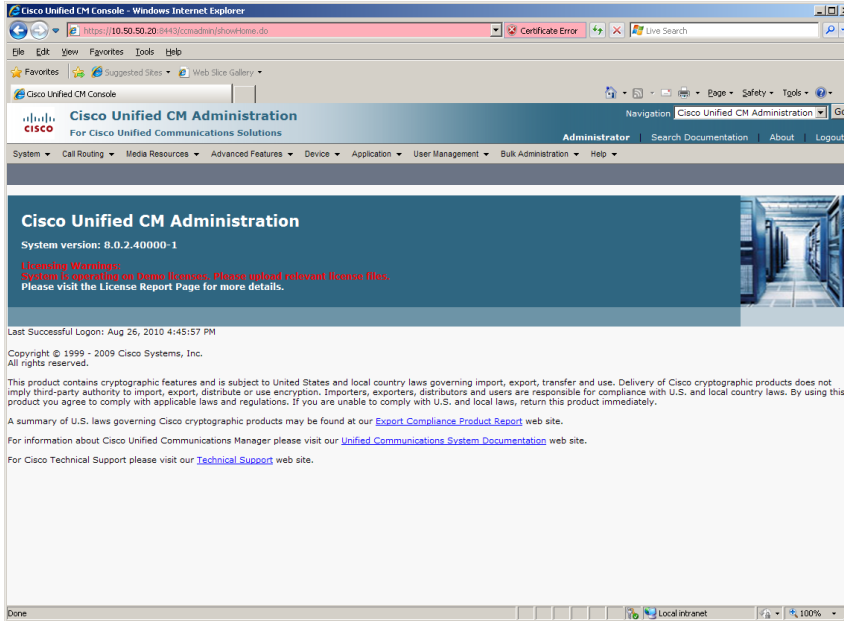
Press Find.



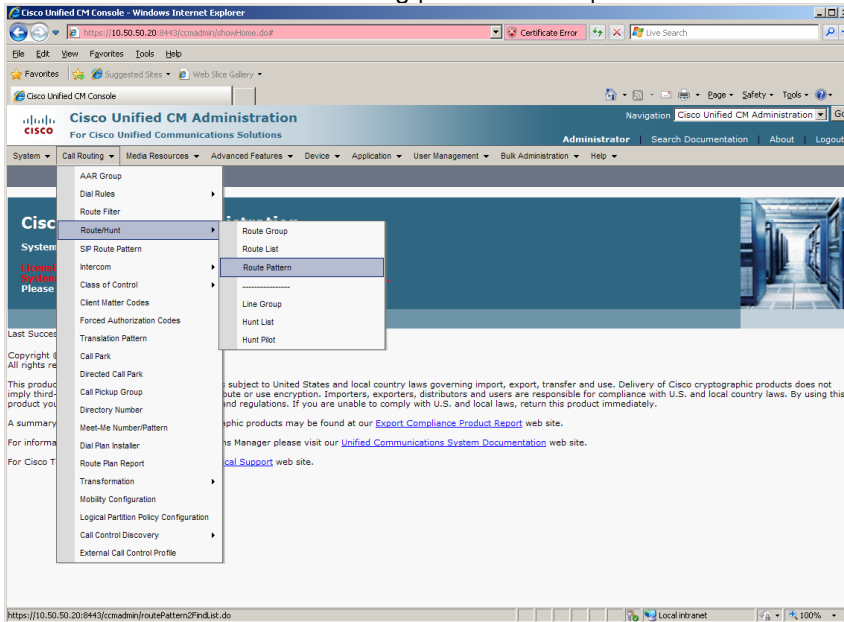
The status of the Cisco MGCP T1 Port should show a status of Registered with CUCM server.

5.9.2 Configure Call Routing

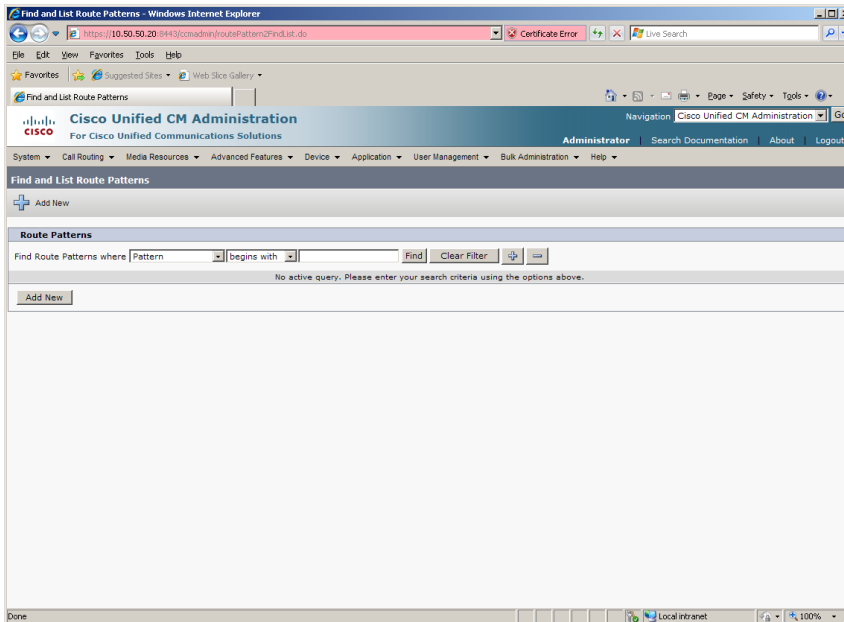
Using a web browser, log into the Cisco Unified CM Administration screen.



From the menu select Call Routing | Route / Hunt | Route Pattern.



The following screen will appear.

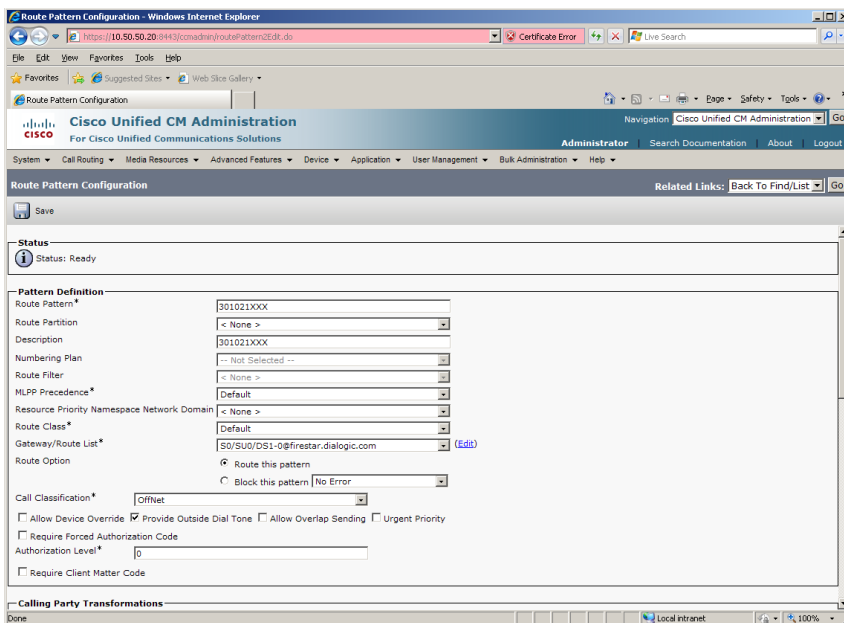


Press Add New.

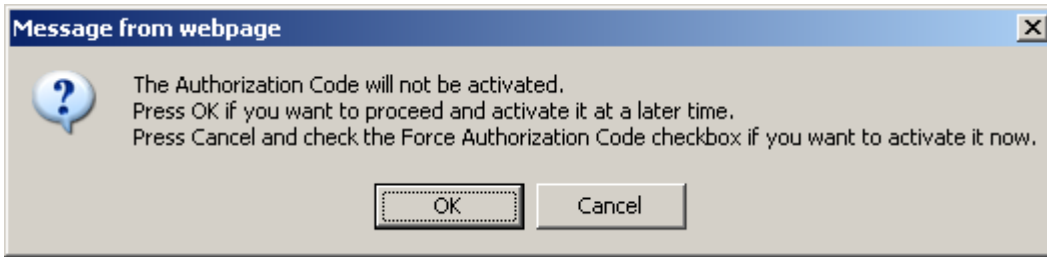
Set the following:

- Route Pattern: 301021XXX
- Description: 301021XXX
- Gateway/Route List: S0/SU0/DS1-0@firestar.dialogic.com
- Call Classification: OffNet

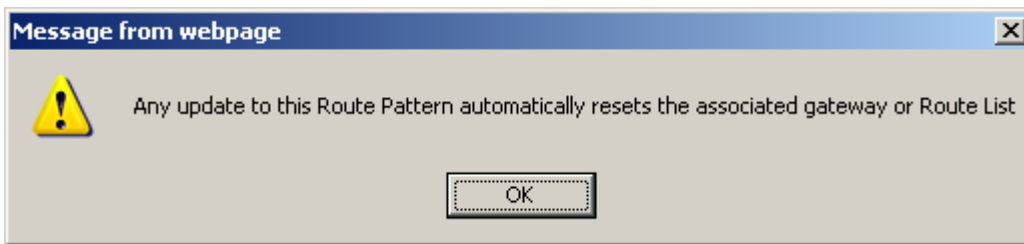
Note: S0/SU0/DS1-0@firestar.dialogic.com is the MGCP Trunk of the Gateway



Press Save.



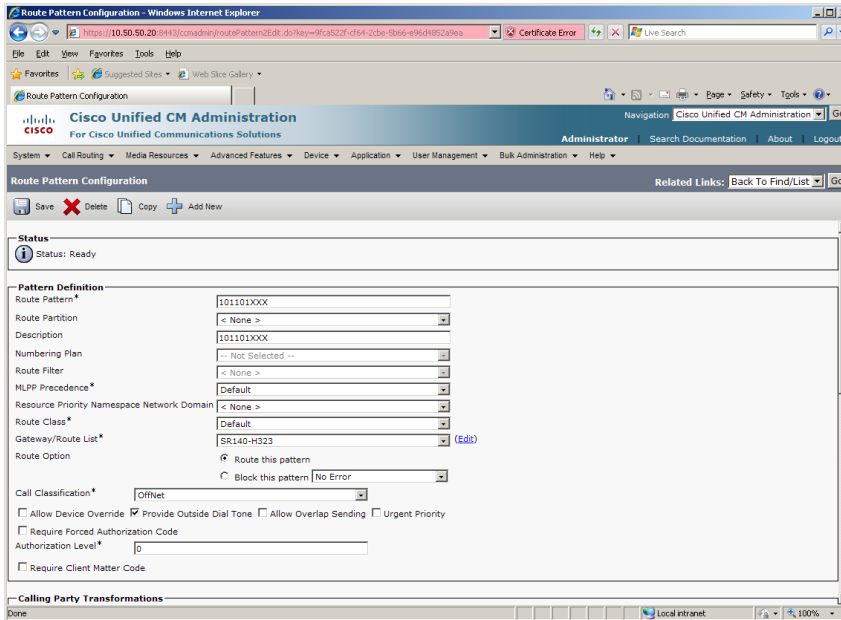
Press OK.



Press OK.

Repeat the same steps and set the following to route to the SR140:

- Route Pattern: 101101XXX
- Description: 101101XXX
- Gateway/Route List: SR140-H323
- Call Classification: OffNet



6 SIP / SIP Configuration Details

6.1 Cisco Unified Communication Manager 8.0 –SIP / SIP Configuration

Vendor	Cisco
Model	Cisco Unified Communication Manager
Software Version	8.0.2.40000-1
Protocol to SR140	SIP
Protocol to Gateway	SIP

6.2 Cisco 2800 Gateway

Vendor	Cisco
Model	Cisco 2800 Integrated Service Router
Software Version	Cisco IOS Software, 2800 Software (C2800NM-ADVENTERPRISEK9_IVS-M), Version 12.4(25c), RELEASE SOFTWARE (fc2)
PSTN Device	Dialogic® Brooktrout® TR1034 Fax Board
Protocol to PSTN Device	T1 Robbed Bit Signaling with E&M Wink Start signal protocol
IP Device	Dialogic® Brooktrout® SR140 Fax Software and Cisco CUCM 8.0
Protocol to CUCM	SIP

6.3 Dialogic® Brooktrout® SR140 Fax Software

Vendor	<i>Dialogic</i>
Model	<i>Dialogic® Brooktrout® SR140 Fax Software</i>
Software Version	<i>SDK 6.3.0</i>
Protocol to CUCM	<i>SIP</i>
callctrl.cfg file	<i>SDK 6.3.0 –All defaults</i>

6.4 Dialogic® Brooktrout® TR1034 Fax Board

Vendor	<i>Dialogic</i>
PSTN Device	<i>Dialogic® Brooktrout® TR1034 Fax Board</i>
Software Version	<i>SDK 6.3.0</i>
Protocol to GW	<i>T1 Robbed Bit Signaling with E&M Wink Start signal protocol</i>
callctrl.cfg file	<i>All defaults</i>

6.5 Network System Configuration – SIP / SIP Configuration

The diagram below details the sample configuration used in connection with the SIP / SIP Configuration.

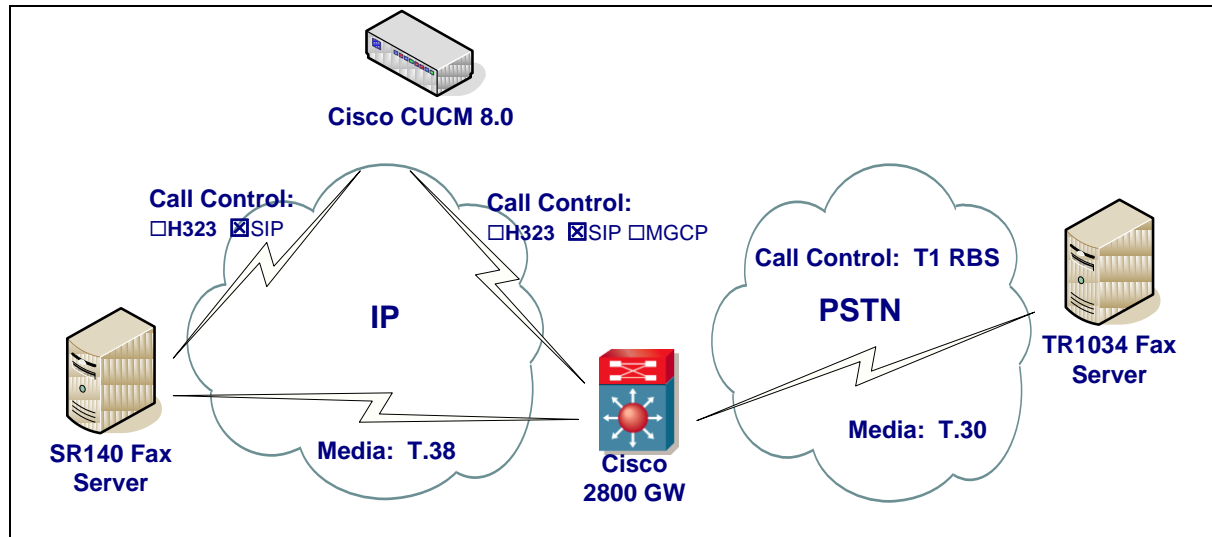


Diagram Notes:

- SR140 Fax Server = Fax Server including Dialogic® Brooktrout® SR140 Fax Software and third party fax application
- TR1034 Fax Server = Fax Server including Dialogic® Brooktrout® TR1034 Fax Board and third party fax application

6.5.1 Network Addresses

Device #	Device Make, Model, and Description	Device IP Address
1	Dialogic® Brooktrout® SR140	10.50.50.101
2	Cisco Unified Communication Manager 8.0	10.50.50.20
3	Cisco 2800 Integrated Service Router	10.50.50.21

6.5.2 Dialing Plan Overview

To call the SR140 from a POTS phone, dial 201101xxx, where x is a number between 0 and 9.

POTS(dial 201101xxx)—T1 RBS—>
Gateway(dial 201101xxx@10.50.50.20)—SIP—>
CUCM8.0.x(dial 201101xxx@10.50.50.101)—SIP—>SR140

To call the POTS lines of the Gateway from the SR140, dial 201021xxx@10.50.50.20, where x is a number between 0 and 9.

SR140(dial 201021xxx@10.50.50.20)—SIP—>
CUCM8.0.x(dial 201021xxx@10.50.50.21)—SIP—>
Gateway(dial 201021xxx)—T1 RBS—>POTS

6.6 Dialogic® Brooktrout® SR140 Fax Software Setup Notes

For the sample test configuration, the SR140 was configured using the default values, consult the *Dialogic® Brooktrout® Fax Products Installation and Configuration Guide* for details.

The Installation and Configuration Guides are available from the site:

<http://www.dialogic.com/manuals/brooktrout/default.htm>

Note: DHCP cannot be used.

6.7 Dialogic® Brooktrout® TR1034 Fax PSTN Setup Notes

For the sample test configuration, the TR1034 was configured using the default values, consult the *Dialogic® Brooktrout® Fax Products Installation and Configuration Guide* for details.

6.8 Cisco 2800 Gateway Setup Notes

For the sample test configuration, the Cisco 2800 Gateway was configured the Cisco IOS Command-Line Interface. The specific items configured include:

- Enable T.38 support
- Configure line card interface
- Configure IP Protocol
- Configure Dial-Peers – POTS
- Configure Dial-Peers – VoIP

6.8.1 Enable T.38 support

The following lines will allow T.38 fax calls.

```
voice service voip
    fax protocol t38 ls-redundancy 2 hs-redundancy 0 fallback none
```

6.8.2 Configure line card interface

The following lines will allow T1 Robbed Bit Signalling with E&M Wink Start signal protocol.

```
controller T1 0/0/0
    framing esf
    clock source internal
    linecode b8zs
    cablelength short 133
    ds0-group 0 timeslots 1-24 type e&m-wink-start dtmf dnis
    description E&M Wink Start T1-RBS
```

Note: the ds0-group line must contain dtmf dnis when doing Wink Start.

6.8.3 Configure IP Protocol

The following will allow SIP calls:

```
voice service voip
    fax protocol t38 ls-redundancy 2 hs-redundancy 0 fallback none
    sip
```

6.8.4 Configure Dial-Peers - POTS

The following will allow the phone numbers 201021000 to 201021999 to be dialed out through the POTS lines.

```
dial-peer voice 201021000 pots
    destination-pattern 201021[0-9][0-9][0-9]
    no digit-strip
    direct-inward-dial
    port 0/0/0:0
```

6.8.5 Configure Dial Peers - VoIP

The following will allow the phone numbers 201101000 to 201101999 to be dialed out through SIP to CUCM.

```
dial-peer voice 201101000 voip
    description SIP to CUCM
    destination-pattern 201101...
    session protocol sipv2
    session target ipv4:10.50.50.20
    session transport udp
    codec g711ulaw
```

Note: The session target ipv4 contains the IP address for CUCM.

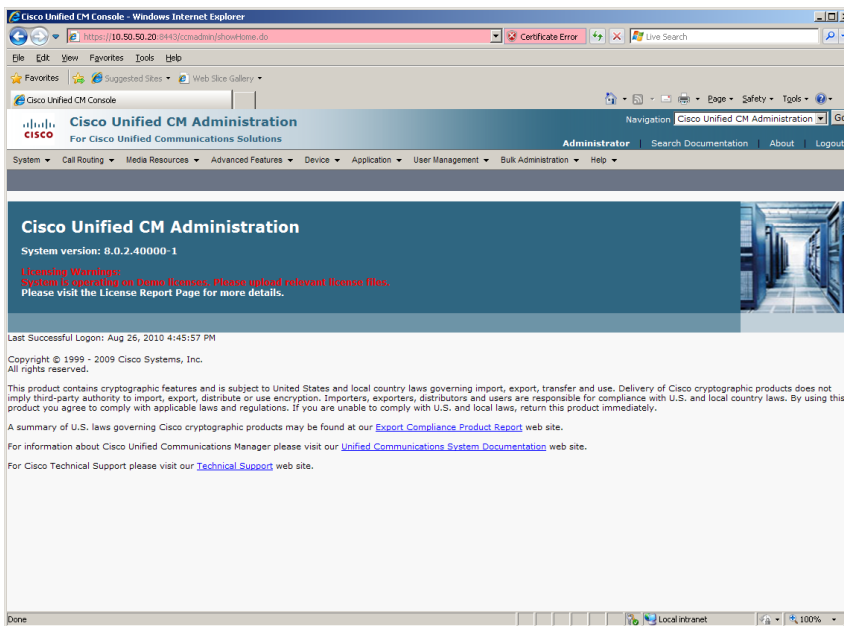
6.9 CUCM 8.0 Setup Notes – SIP / SIP Configuration

The CUCM 8.0 configuration values that were used in the sample configuration involve configuring the following items:

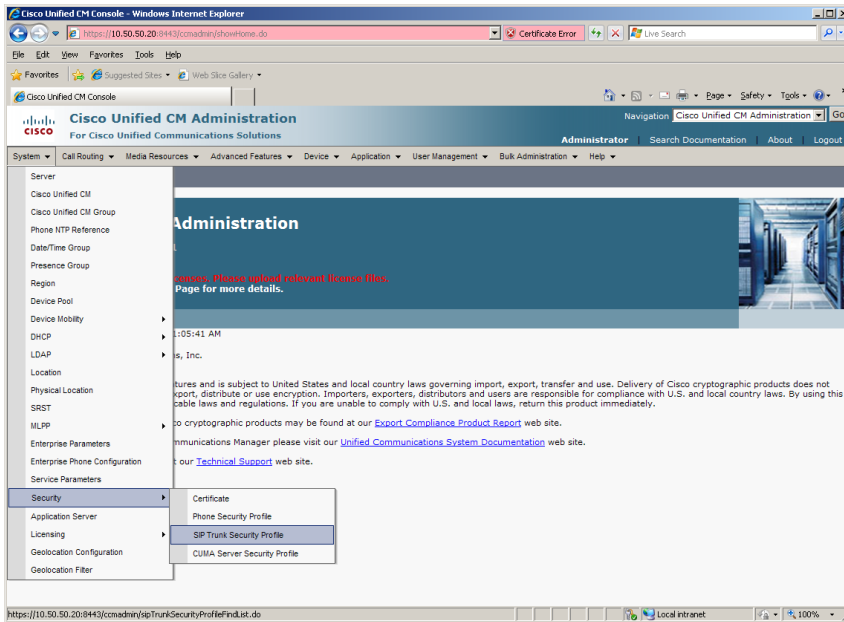
- Configure Service Activation – refer to [section 4.9.1](#)
- Configure License – refer to [section 4.9.2](#)
- Configure SIP Trunk Security Profile
- Configure SR140 Trunk
- Configure Gateway Trunk
- Configure Call Routing

6.9.1 Configure SIP Trunk Security Profile

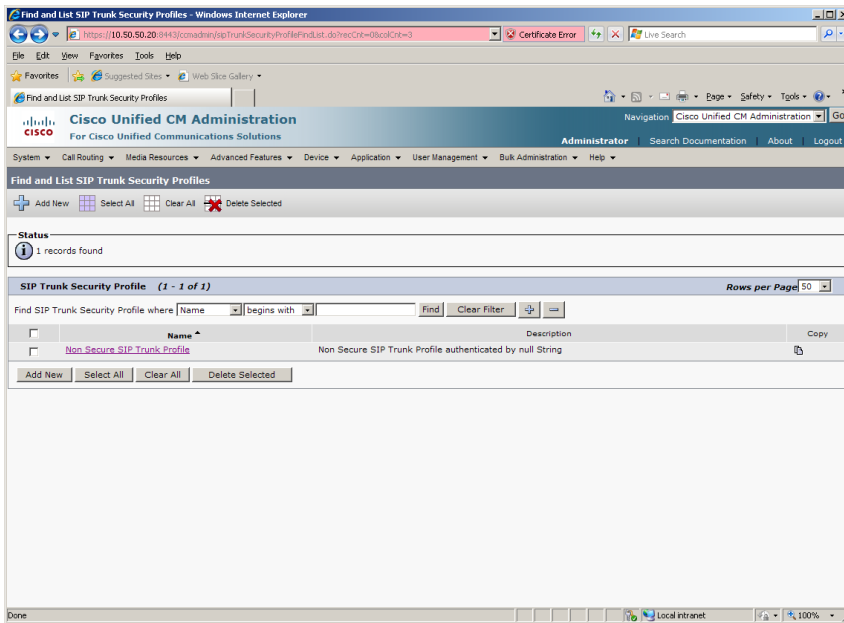
Using a web browser, log into CUCM 8.0. The following Cisco Unified CM Administration screen appears.



From the menu select System | Security | SIP Trunk Security Profile.

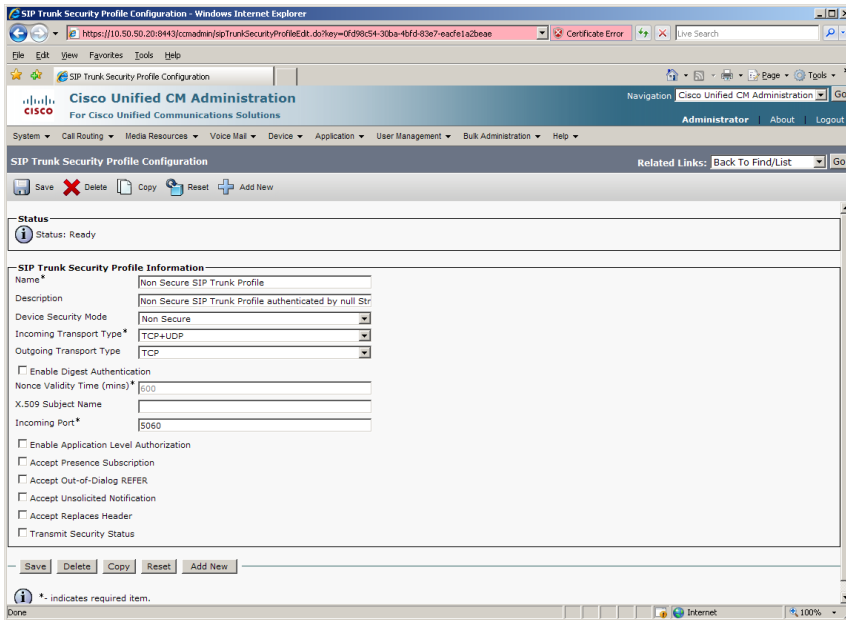


The following screen will appear.

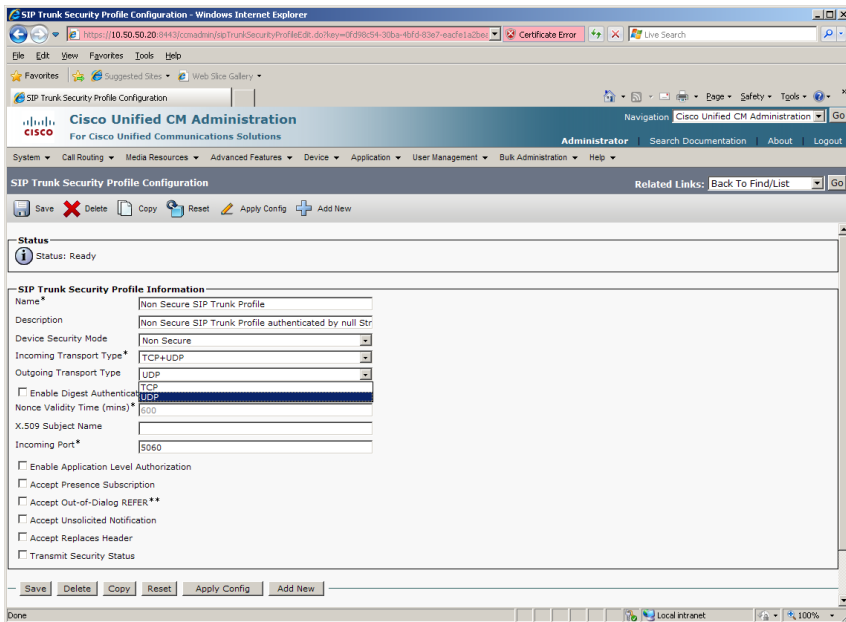


Click Non Secure SIP Trunk Profile.

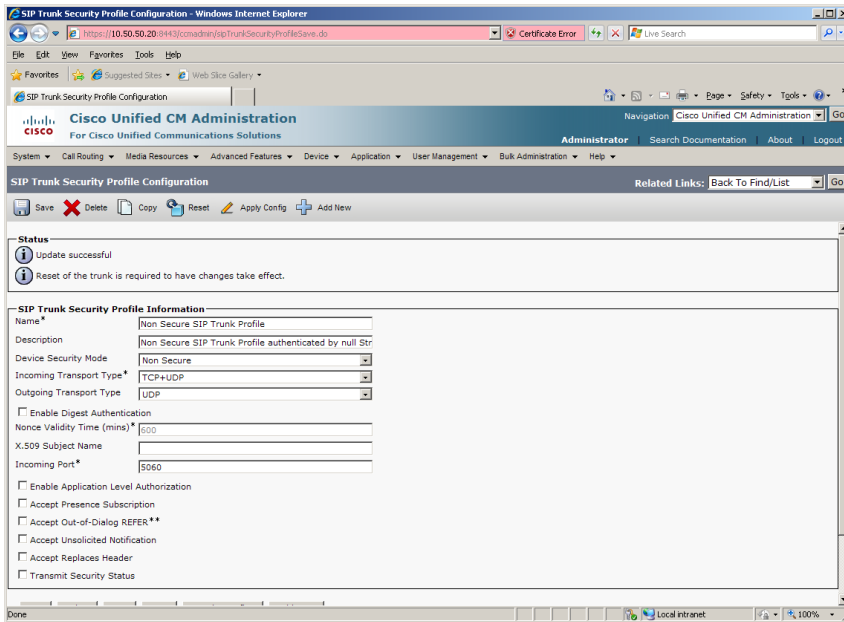
Dialogic® Brooktrout® SR140 Fax Software with Cisco Unified Communications Manager 8.0
Installation and Configuration Integration Note



Change Outgoing Transport Type to UDP.

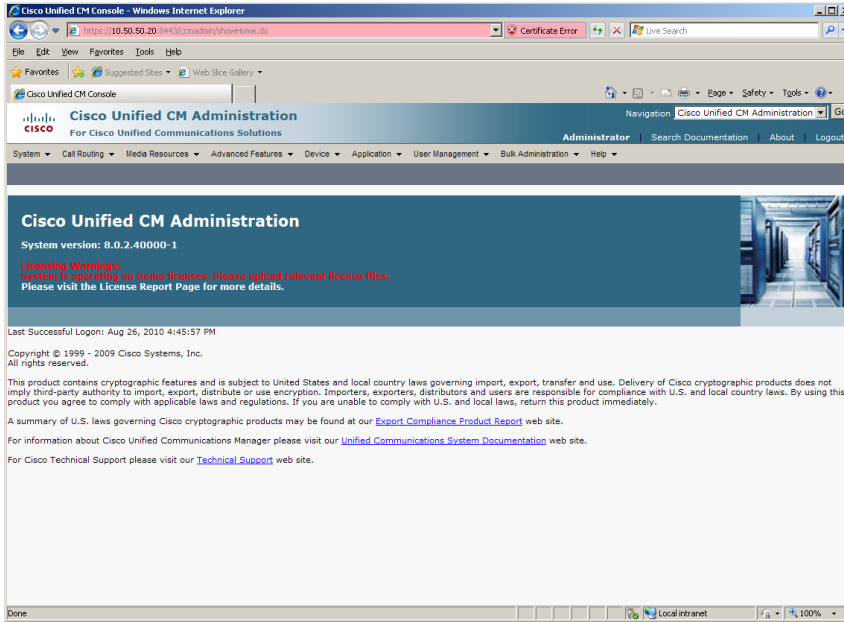


Press Save.

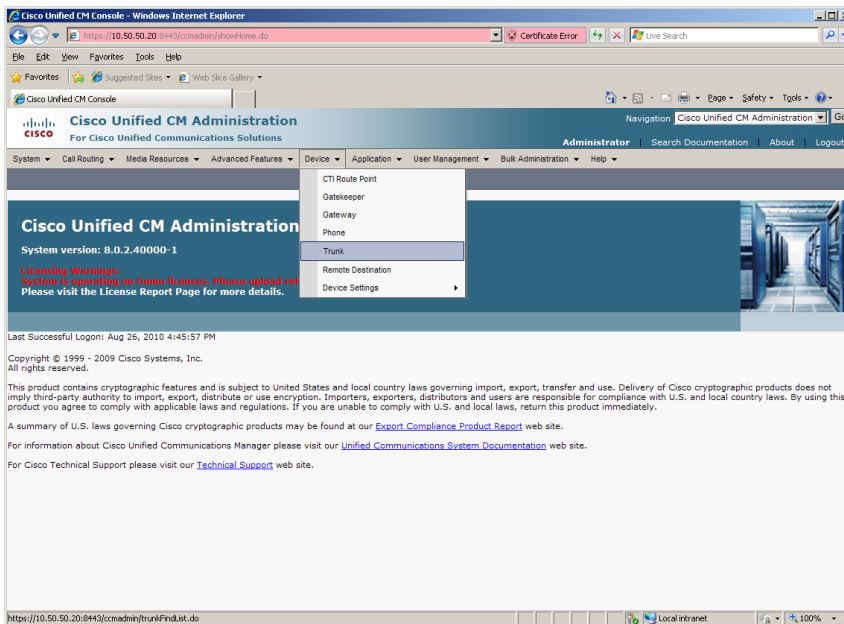


6.9.2 Configure SR140 Trunk

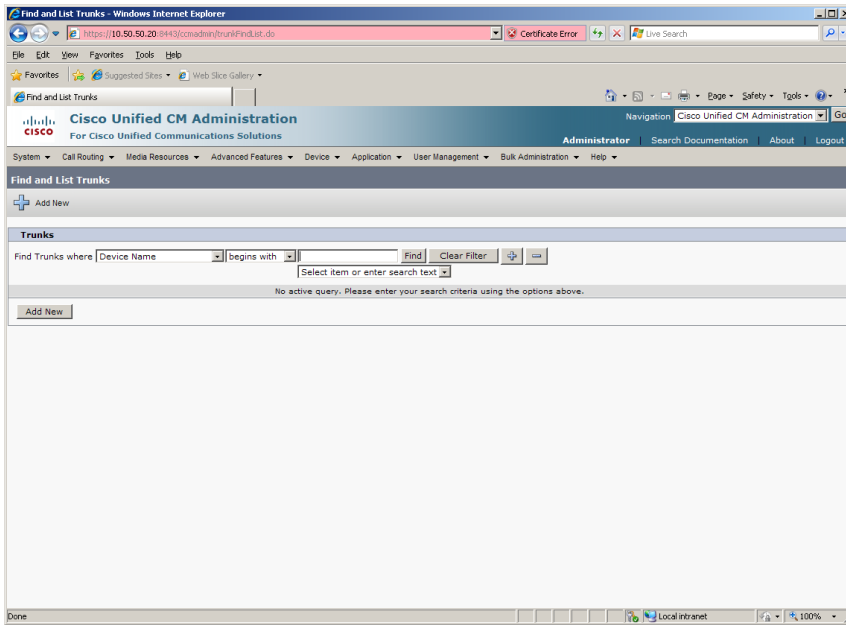
Using a web browser, log into the Cisco Unified CM Administration screen.



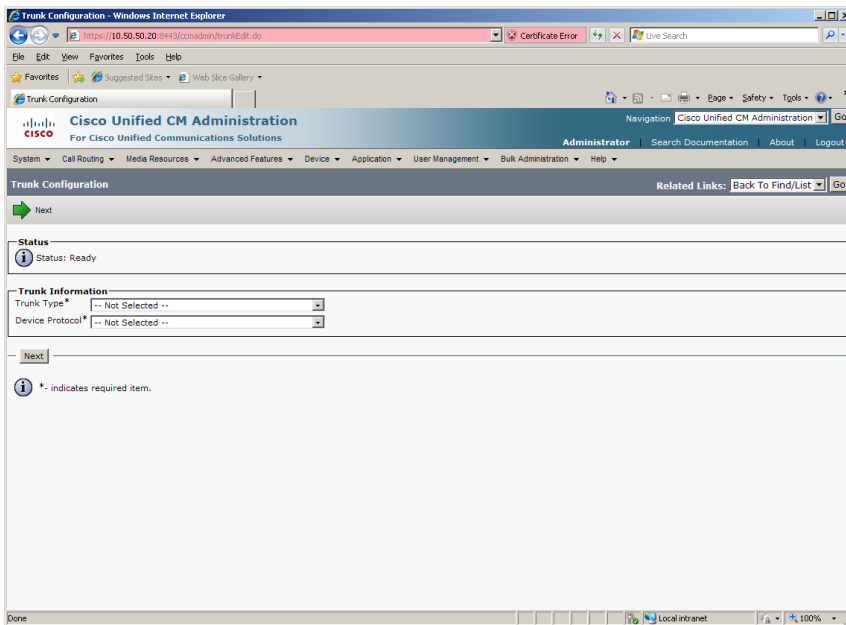
From the menu select Device | Trunk.



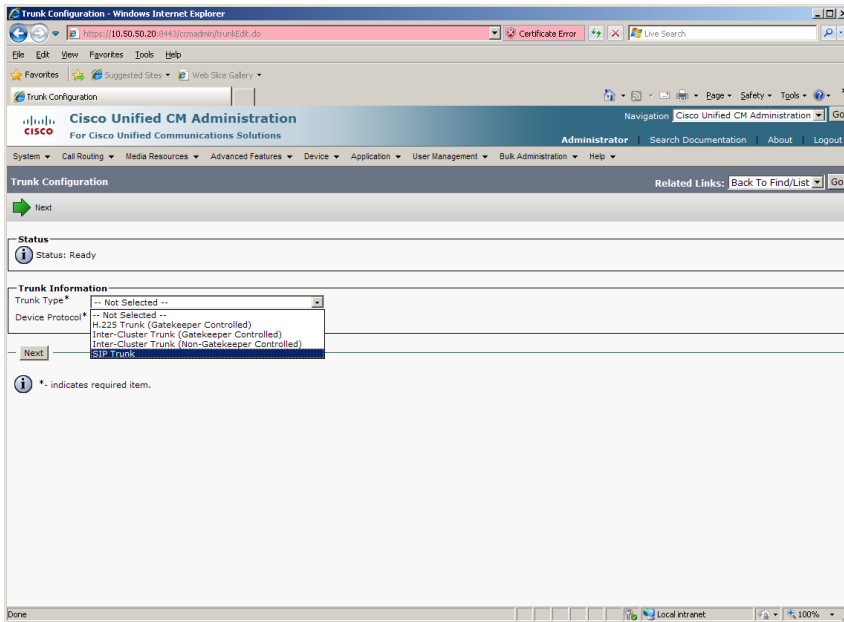
The following screen will appear.



Press Add New to add a new SIP Trunk.



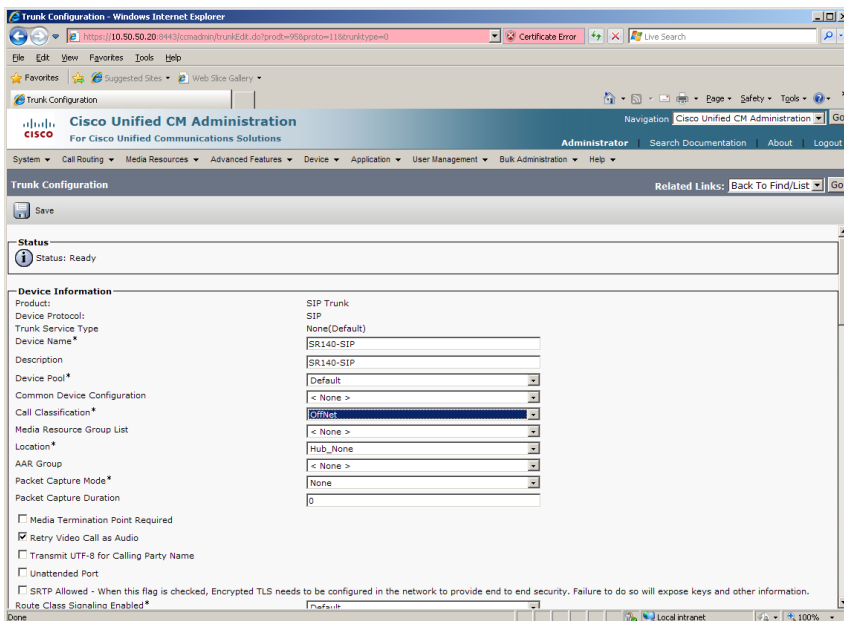
Select SIP Trunk for the Trunk Type.

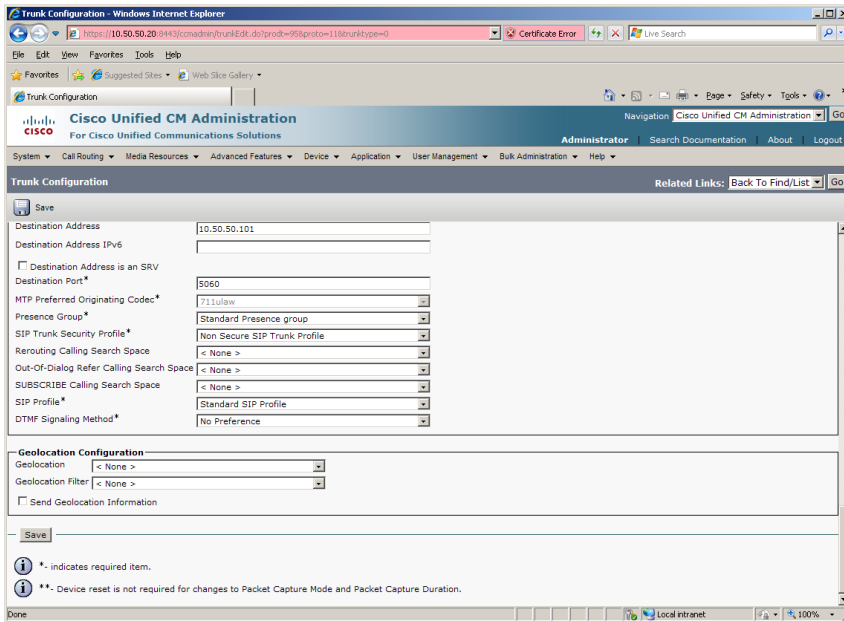


Select SIP for the Device Protocol and press Next.
Set the following:

- Device Name: SR140-SIP
- Device Description: SR140-SIP
- Device Pool: Default
- Call Classification: OffNet
- Destination Address: 10.50.50.101
- SIP Trunk Security Profile: Non Secure SIP Trunk Profile
- SIP Profile: Standard SIP Profile

Note: Destination Address is the IP address of the SR140.

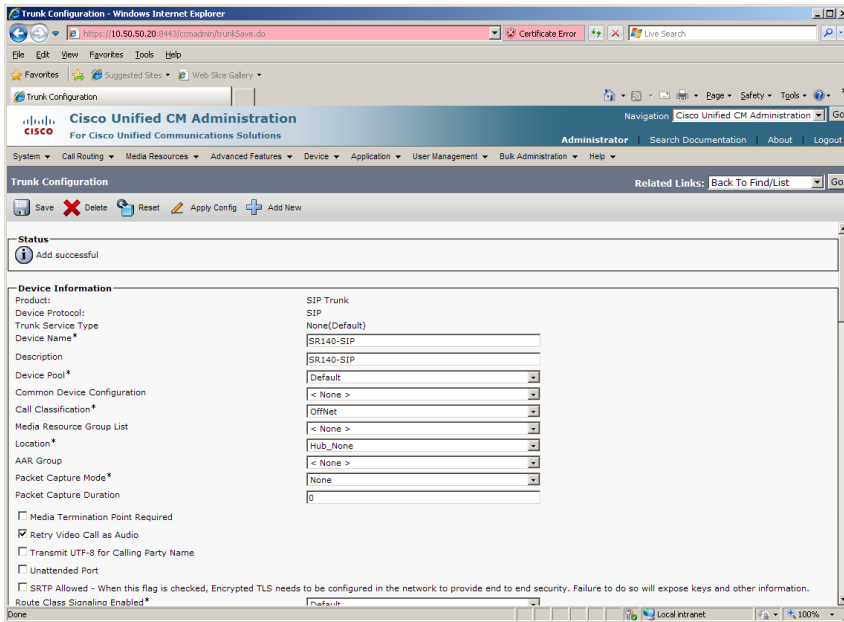




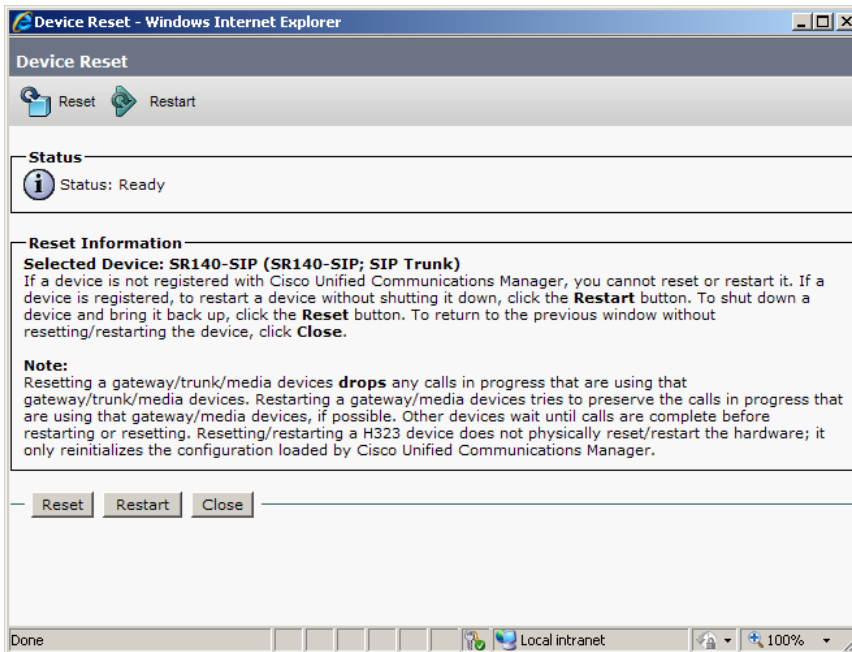
Press Save.



Press OK.



Press Reset.

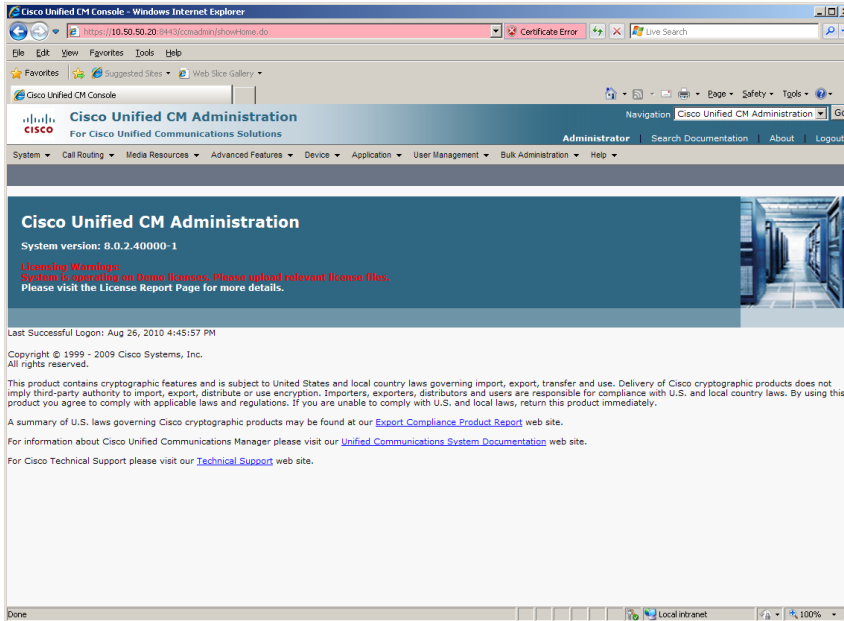


Press Restart then press Close.

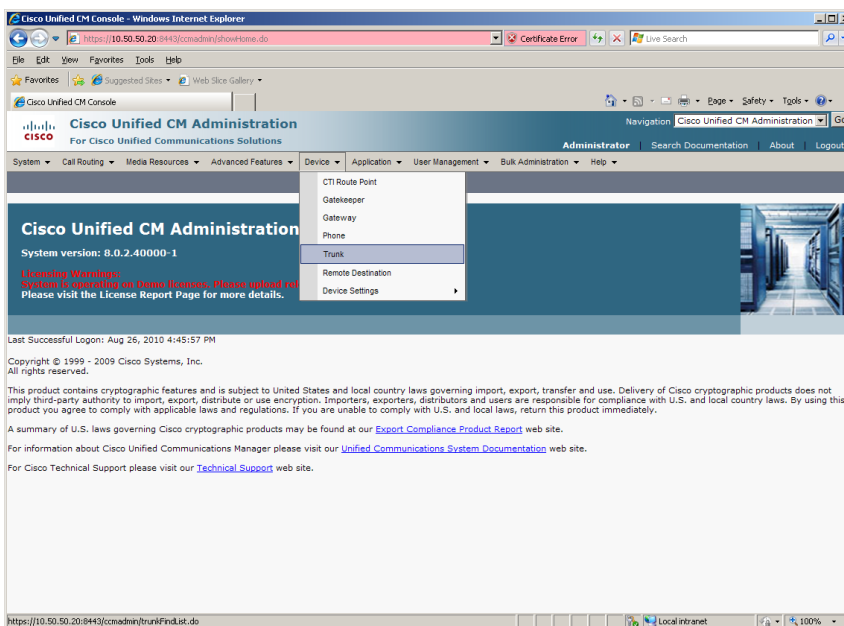
6.9.3 Configure Gateway Trunk

The following section describes an example on how to configure the gateway trunk. If your network is already configured, you may skip this section.

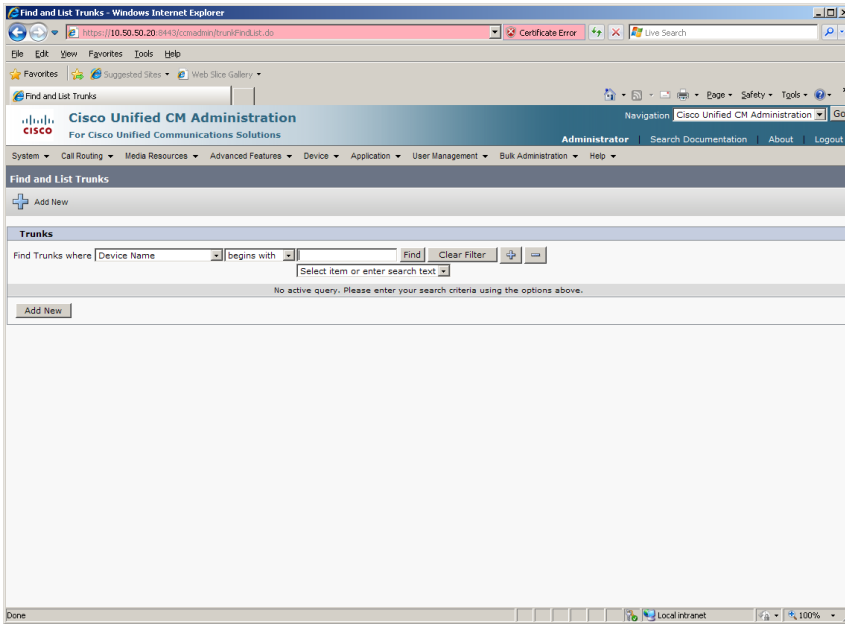
Using a web browser, log into the Cisco Unified CM Administration screen.



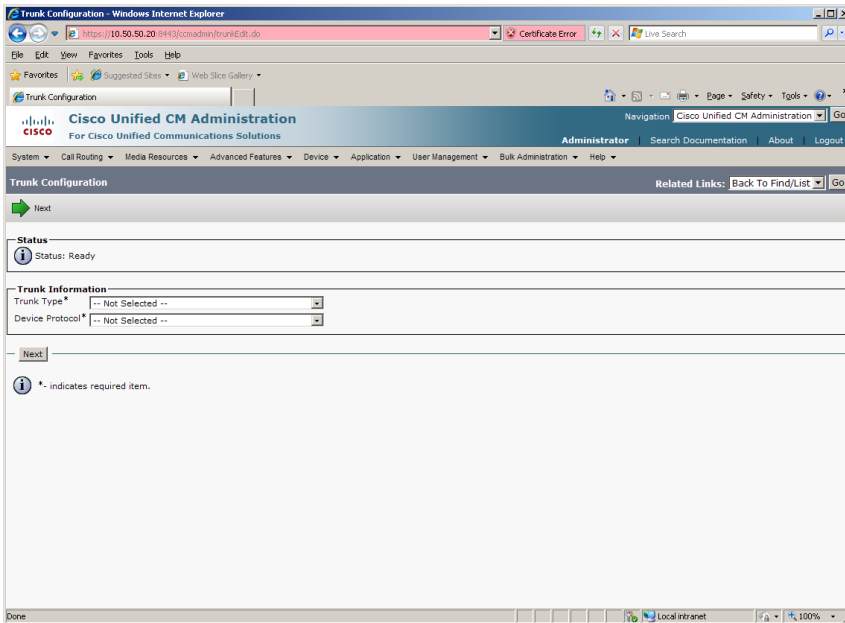
From the menu select Device | Trunk.



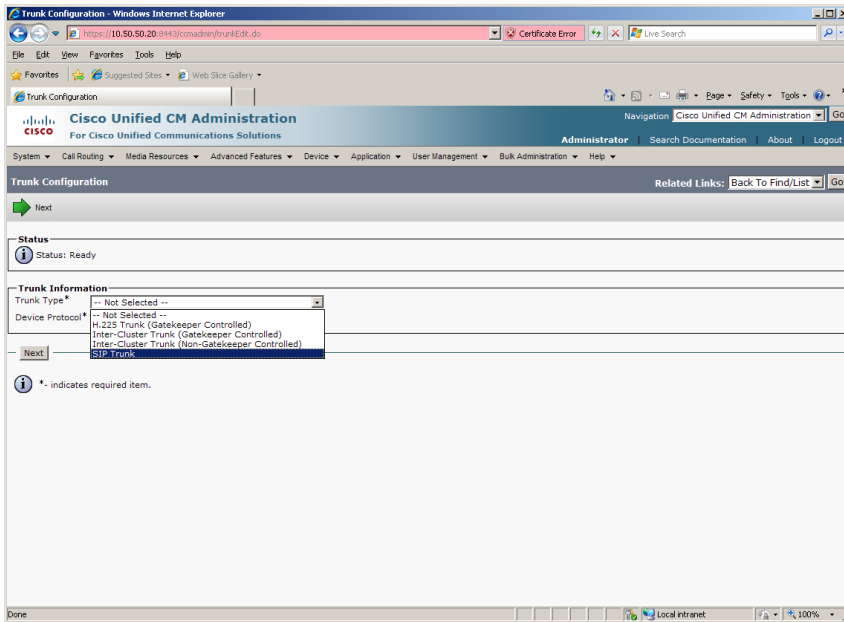
The following screen will appear.



Press Add New to add a new SIP Trunk.



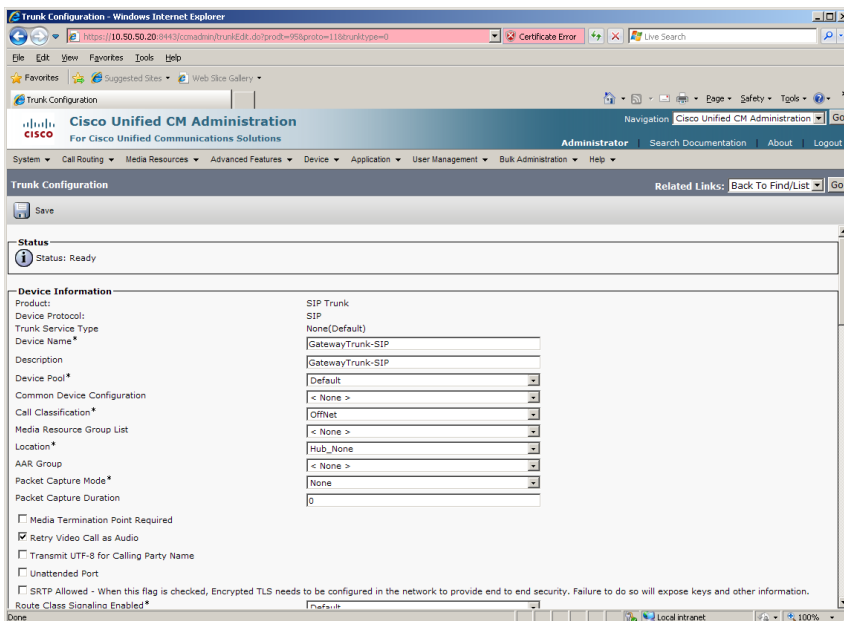
Select SIP Trunk for the Trunk Type.

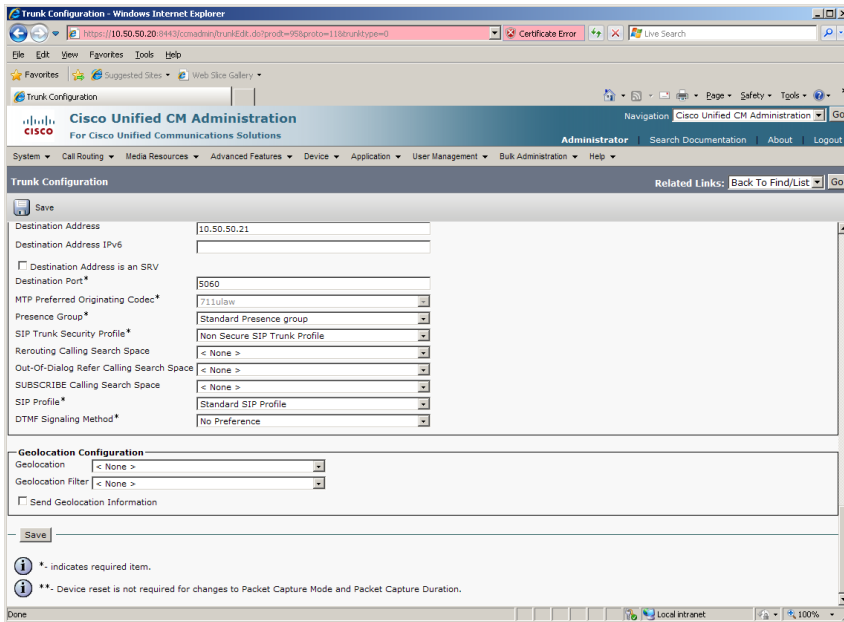


Select SIP for the Device Protocol and press Next.
Set the following:

- Device Name: GatewayTrunk-SIP
- Device Description: GatewayTrunk -SIP
- Device Pool: Default
- Call Classification: OffNet
- Destination Address: 10.50.50.21
- SIP Trunk Security Profile: Non Secure SIP Trunk Profile
- SIP Profile: Standard SIP Profile

Note: Destination Address is the IP address of the Gateway.

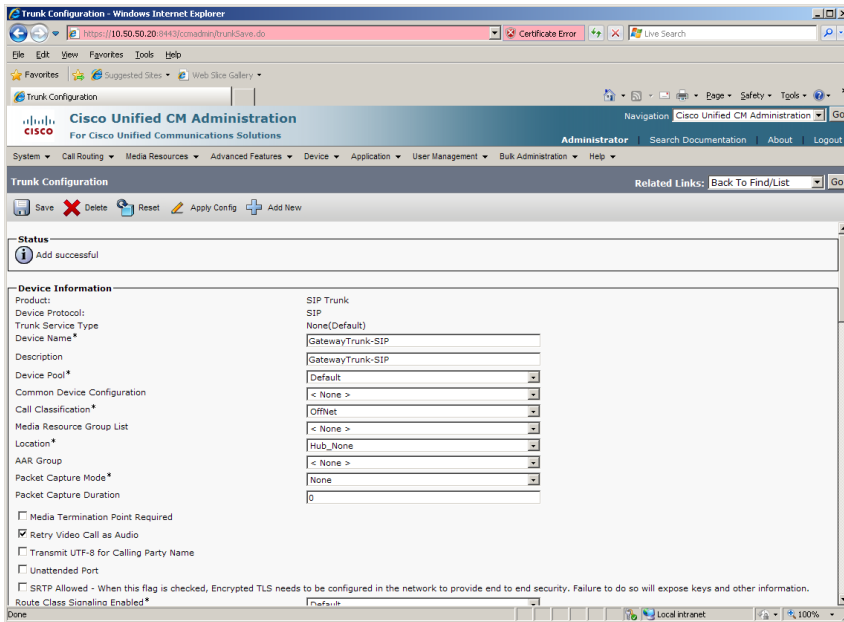




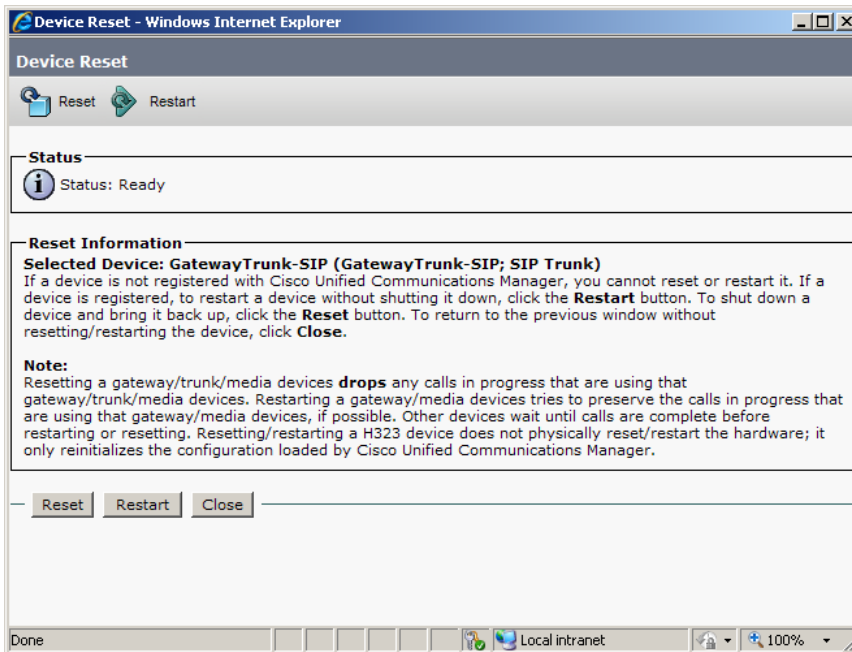
Press Save.



Press OK.



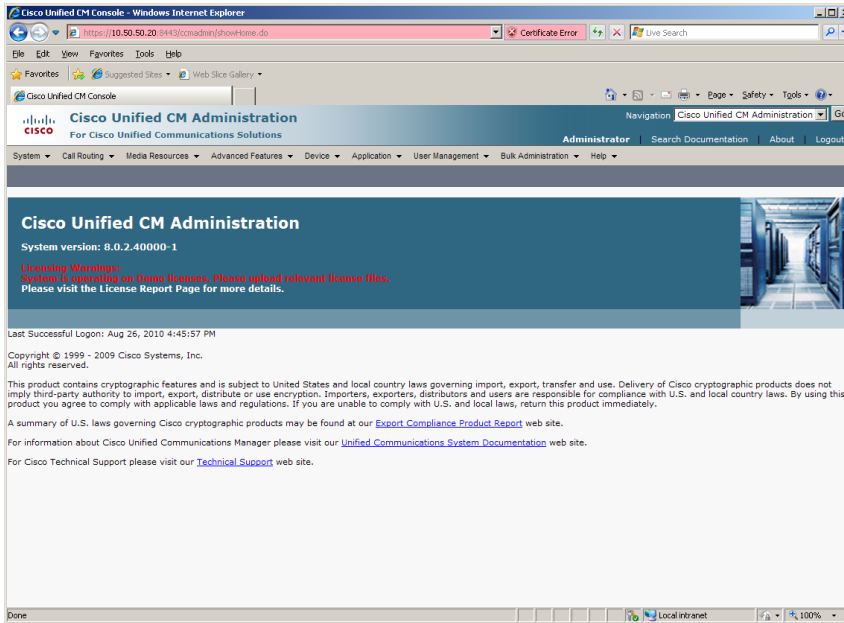
Press Reset.



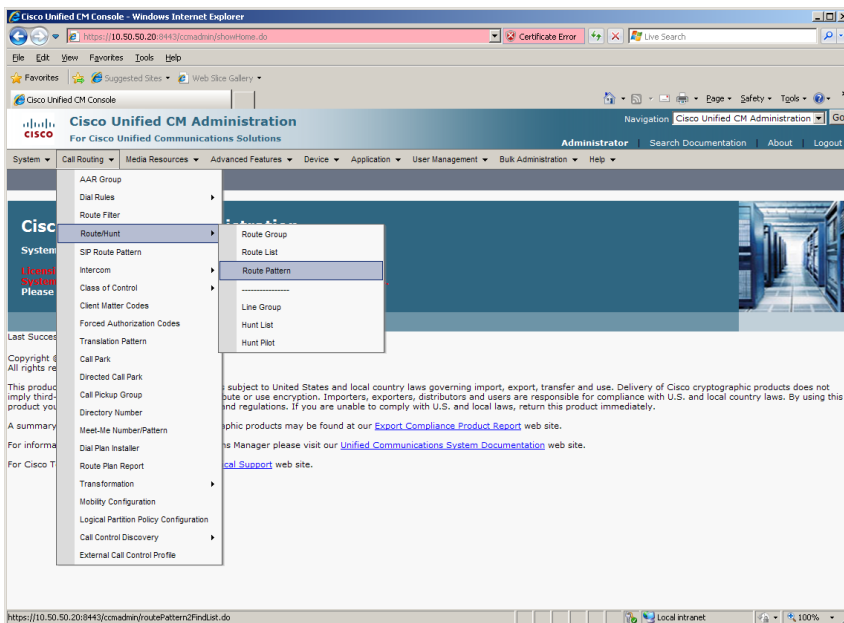
Press Restart then press Close.

6.9.4 Configure Call Routing

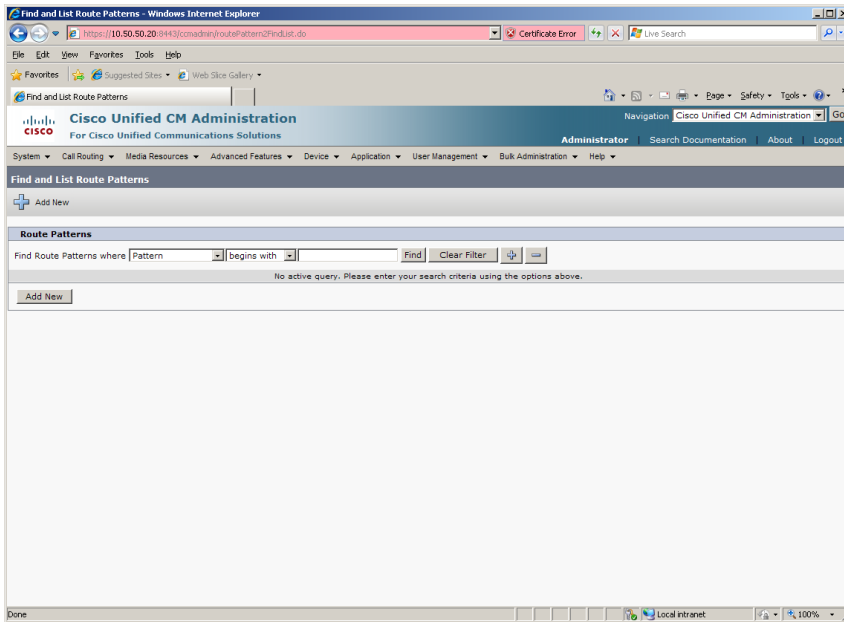
Using a web browser, log into the Cisco Unified CM Administration screen.



From the menu select Call Routing | Route / Hunt | Route Pattern.

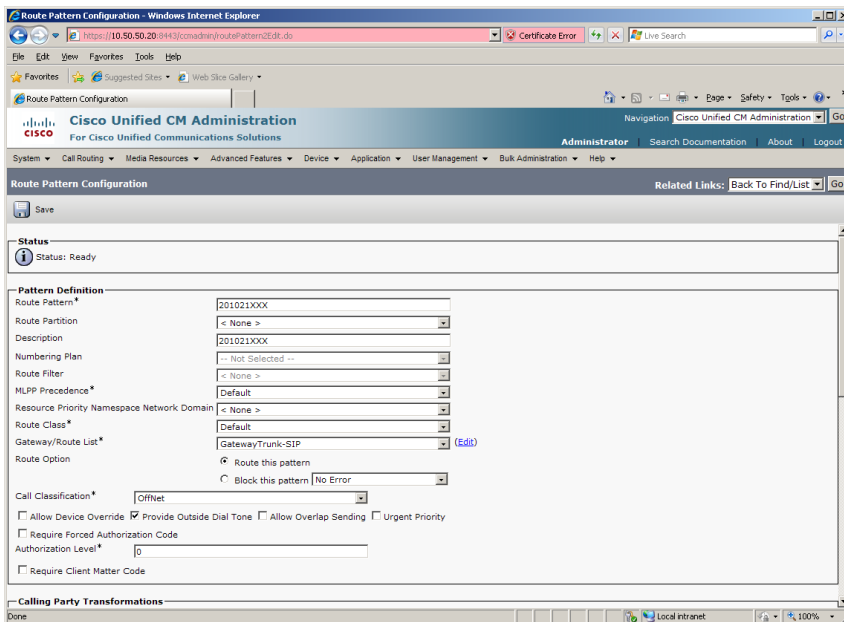


The following screen will appear.

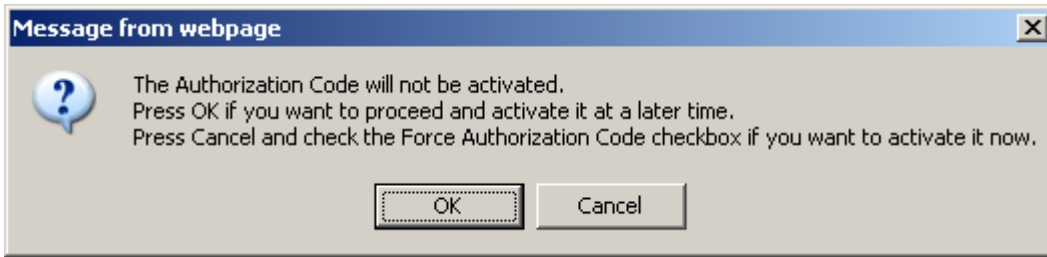


Press Add New.
Set the following:

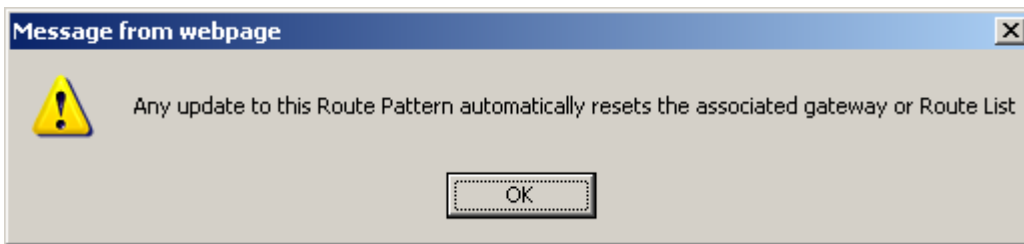
- Route Pattern: 201021XXX
- Description: 201021XXX
- Gateway/Route List: GatewayTrunk-SIP
- Call Classification: OffNet



Press Save.



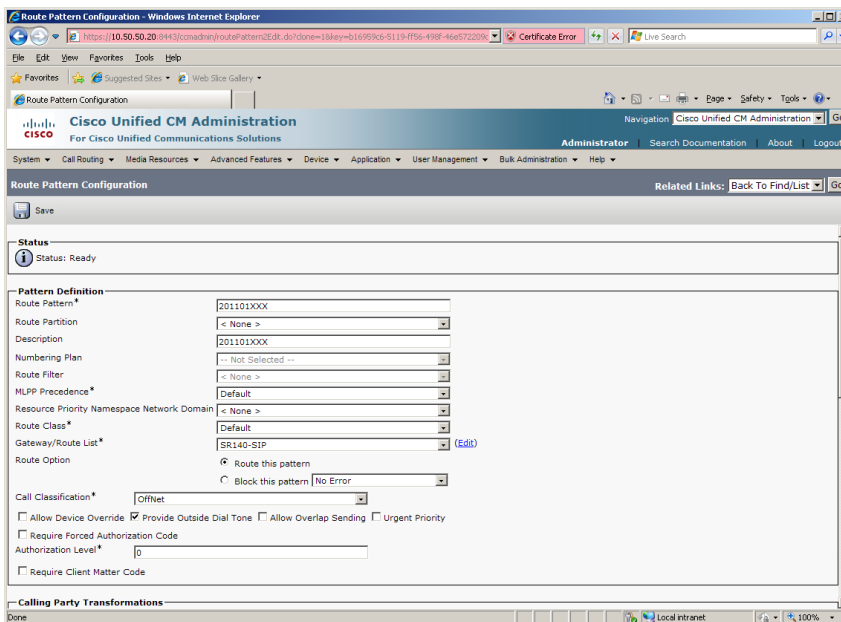
Press OK.



Press OK.

Repeat the same steps and set the following to route to the SR140:

- Route Pattern: 201101XXX
- Description: 201101XXX
- Gateway/Route List: SR140-SIP
- Call Classification: OffNet



7 SIP / MGCP Configuration Details

7.1 Cisco Unified Communication Manager 8.0 – SIP / MGCP Configuration

Vendor	Cisco
Model	Cisco Unified Communication Manager
Software Version	8.0.2.40000-1
Protocol to SR140	SIP
Protocol to Gateway	MGCP

7.2 Cisco 2800 Gateway

Vendor	Cisco
Model	Cisco 2800 Integrated Service Router
Software Version	Cisco IOS Software, 2800 Software (C2800NM-ADVENTERPRISEK9_IVS-M), Version 12.4(25c), RELEASE SOFTWARE (fc2)
PSTN Device	Dialogic® Brooktrout® TR1034 Fax Board
Protocol to PSTN Device	T1 Robbed Bit Signaling with E&M Wink Start signal protocol
IP Device	Dialogic® Brooktrout® SR140 Fax Software and Cisco CUCM 8.0
Protocol to CUCM	MGCP

7.3 Dialogic® Brooktrout® SR140 Fax Software

Vendor	<i>Dialogic</i>
Model	<i>Dialogic® Brooktrout® SR140 Fax Software</i>
Software Version	<i>SDK 6.3.0</i>
Protocol to CUCM	<i>SIP</i>
callctrl.cfg file	<i>SDK 6.3.0 –All defaults</i>

7.4 Dialogic® Brooktrout® TR1034 Fax Board

Vendor	<i>Dialogic</i>
PSTN Device	<i>Dialogic® Brooktrout® TR1034 Fax Board</i>
Software Version	<i>SDK 6.3.0</i>
Protocol to GW	<i>T1 Robbed Bit Signaling with E&M Wink Start signal protocol</i>
callctrl.cfg file	<i>All defaults</i>

7.5 Network System Configuration – SIP / MGCP Configuration

The diagram below details the sample configuration used in connection with the SIP / MGCP Configuration.

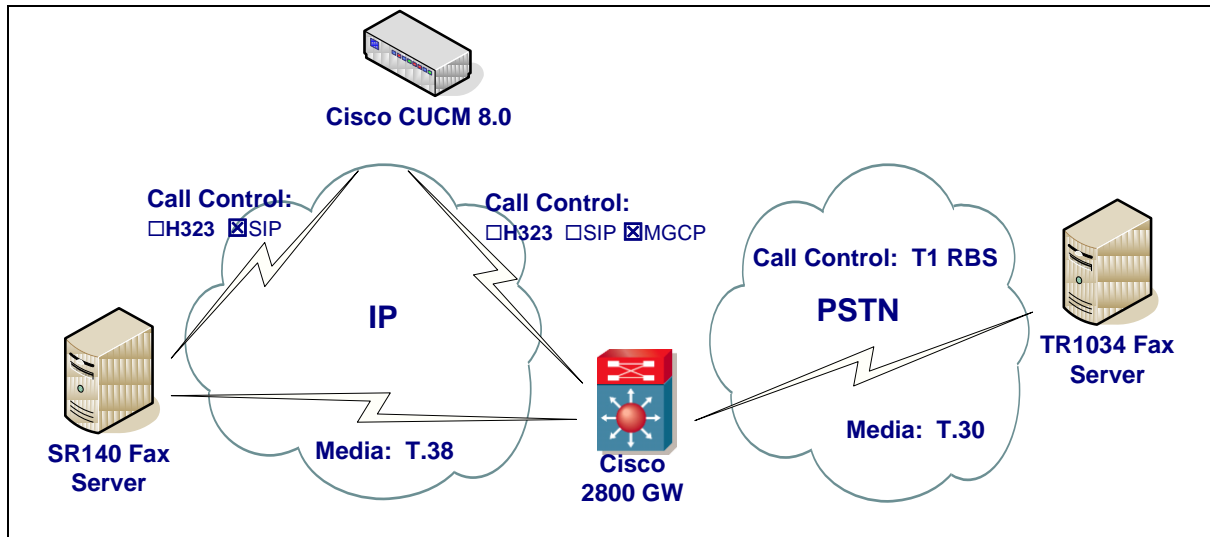


Diagram Notes:

- SR140 Fax Server = Fax Server including Dialogic® Brooktrout® SR140 Fax Software and third party fax application
- TR1034 Fax Server = Fax Server including Dialogic® Brooktrout® TR1034 Fax Board and third party fax application

7.5.1 Network Addresses

Device #	Device Make, Model, and Description	Device IP Address
1	Dialogic® Brooktrout® SR140	10.50.50.101
2	Cisco Unified Communication Manager 8.0	10.50.50.20
3	Cisco 2800 Integrated Service Router	10.50.50.21

7.5.2 Dialing Plan Overview

To call the SR140 from a POTS phone, dial 201101xxx, where x is a number between 0 and 9.

POTS(dial 201101xxx)—T1 RBS—>

Gateway(dial 201101xxx@10.50.50.20)—MGCP—>

CUCM8.0.x(dial 201101xxx@10.50.50.101)—SIP—>SR140

To call the POTS lines of the Gateway from the SR140, dial 301021xxx@10.50.50.20, where x is a number between 0 and 9.

SR140(dial 301021xxx@10.50.50.20)—SIP—>
CUCM8.0.x(dial 301021xxx@10.50.50.21)—MGCP—>
Gateway(dial 301021xxx)—T1 RBS—>POTS

7.6 Dialogic® Brooktrout® SR140 Fax Software Setup Notes

For the sample test configuration, the SR140 was configured using the default values, consult the Dialogic® Brooktrout® Fax Products Installation and Configuration Guide for details.

The Installation and Configuration Guides are available from the site:

<http://www.dialogic.com/manuals/brooktrout/default.htm>

Note: DHCP cannot be used.

7.7 Dialogic® Brooktrout® TR1034 Fax PSTN Setup Notes

For the sample test configuration, the TR1034 was configured using the default values, consult the Dialogic® Brooktrout® Fax Products Installation and Configuration Guide for details.

7.8 Cisco 2800 Gateway Setup Notes

For the sample test configuration, the Cisco 2800 Gateway was configured the Cisco IOS Command-Line Interface. The specific items configured include:

- Configure line card interface
- Configure MGCP
- Configure Dial-Peers

7.8.1 Configure line card interface

The following lines will allow T1 Robbed Bit Signaling with E&M Wink Start signal protocol.

```
controller T1 0/0/0
    framing esf
    clock source internal
    linecode b8zs
    cablelength short 133
    ds0-group 0 timeslots 1-24 type e&m-wink-start
    description E&M Wink Start T1-RBS
```

Note: the ds0-group line must NOT contain dtmf dnis when doing Wink Start and MGCP.

7.8.2 Configure MGCP

The following will allow MGCP calls.

```
ccm-manager mgcp
ccm-manager music-on-hold
ccm-manager config server 10.50.50.20
!
mgcp
mgcp call-agent 10.50.50.20 2427 service-type mgcp version 0.1
mgcp default-package fxr-package
!
mgcp profile default
```

Note: 10.50.50.20 is the IP address of the CUCM.

Note: Verify that **mgcp fax t38 inhibit** is not present since it disables T.38

7.8.3 Configure Dial-Peers - POTS

With MGCP the dial-peers are configured on CUCM. The POTS port controlled by MGCP must be configured as follows:

```
dial-peer voice 301021000 pots
service mgcpapp
port 0/0/0:0
```

After configuring CUCM verify that the Gateway is registered with the command **sh ccm-manager**.

```
firestar#sh ccm-manager
MGCP Domain Name: firestar.dialogic.com
Priority      Status      Host
=====
Primary      Registered  10.50.50.20
First Backup  None
Second Backup None

Current active Call Manager:  10.50.50.20
Backhaul/Redundant link port: 2428
Failover Interval:           30 seconds
Keepalive Interval:          15 seconds
Last keepalive sent:         12:46:14 PCTime Aug 31 2010 (elapsed time: 00:00:05)
Last MGCP traffic time:      12:46:14 PCTime Aug 31 2010 (elapsed time: 00:00:05)
Last failover time:          None
Last switchback time:        None
Switchback mode:             Graceful
MGCP Fallback mode:          Not Selected
Last MGCP Fallback start time: None
Last MGCP Fallback end time:  None
MGCP Download Tones:         Disabled
TFTP retry count to shut Ports: 2
```

```
Configuration Error History:
FAX mode: cisco
```

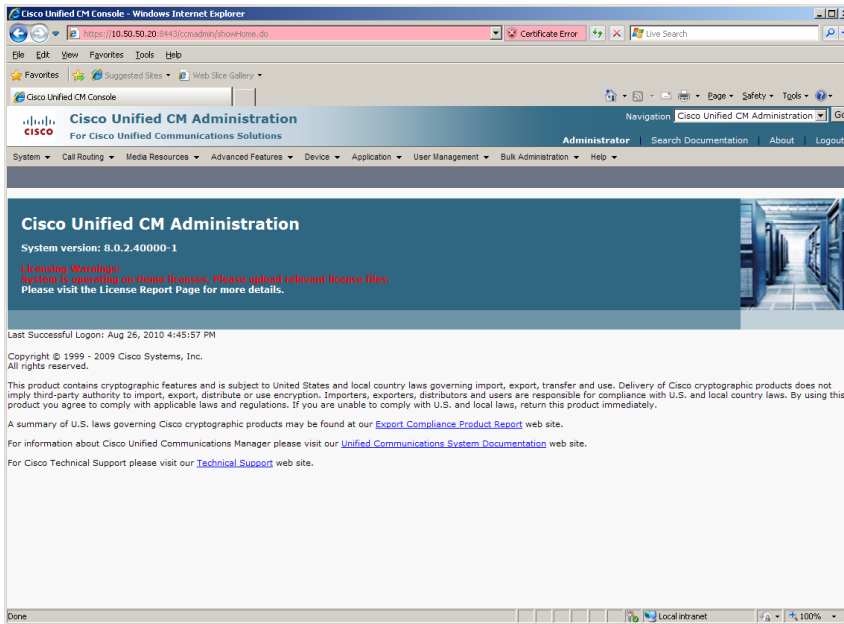
7.9 CUCM 8.0 Setup Notes – SIP / MGCP Configuration

The CUCM 8.0 configuration values that were used in the sample configuration involve configuring the following items:

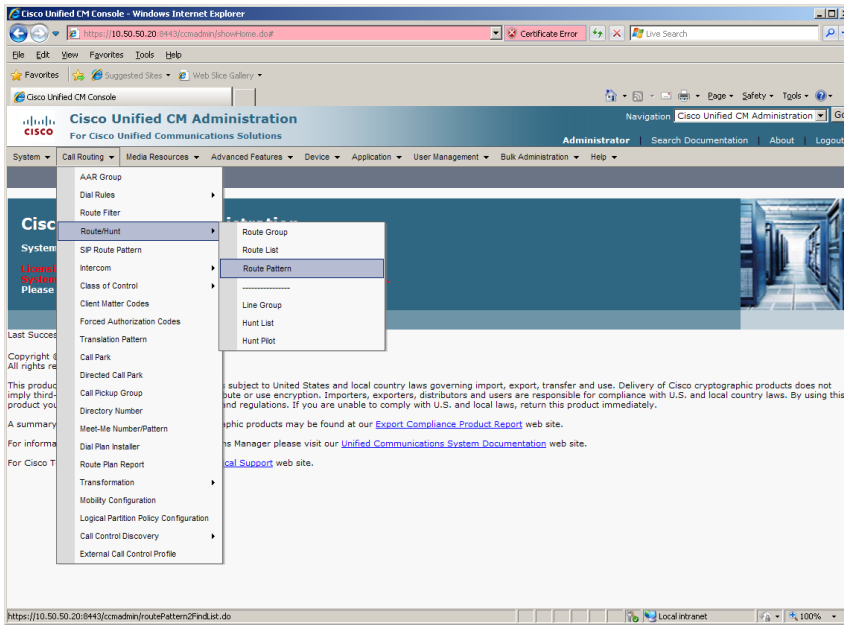
- Configure Service Activation – refer [section 4.9.1](#)
- Configure License – refer to [section 4.9.2](#)
- Configure SIP Trunk Security Profile – refer to [section 6.9.1](#)
- Configure SR140 Trunk – refer to [section 6.9.2](#)
- Configure Gateway Trunk – refer to [section 5.9.1](#)
- Configure Call Routing

7.9.1 Configure Call Routing

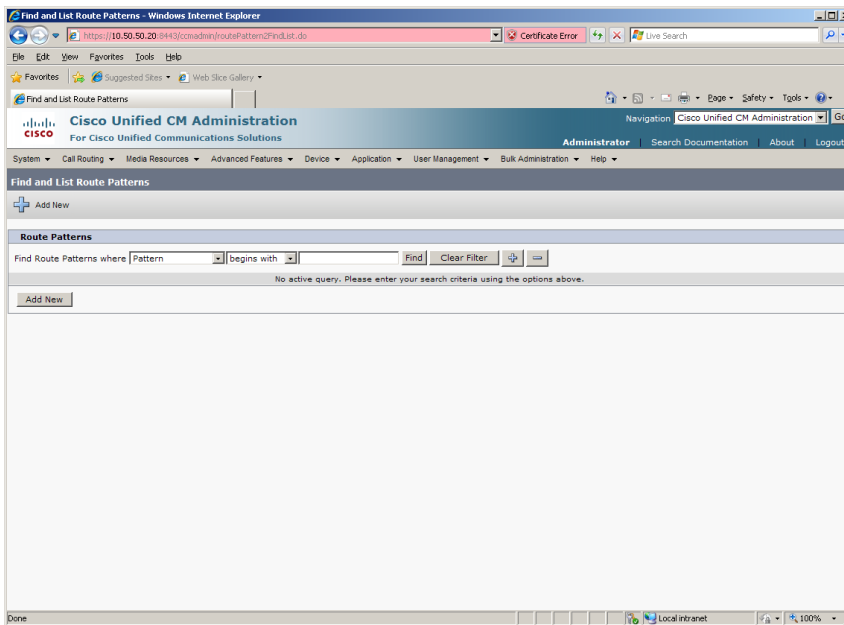
Using a web browser, log into the Cisco Unified CM Administration screen.



From the menu select Call Routing | Route / Hunt | Route Pattern.



The following screen will appear.

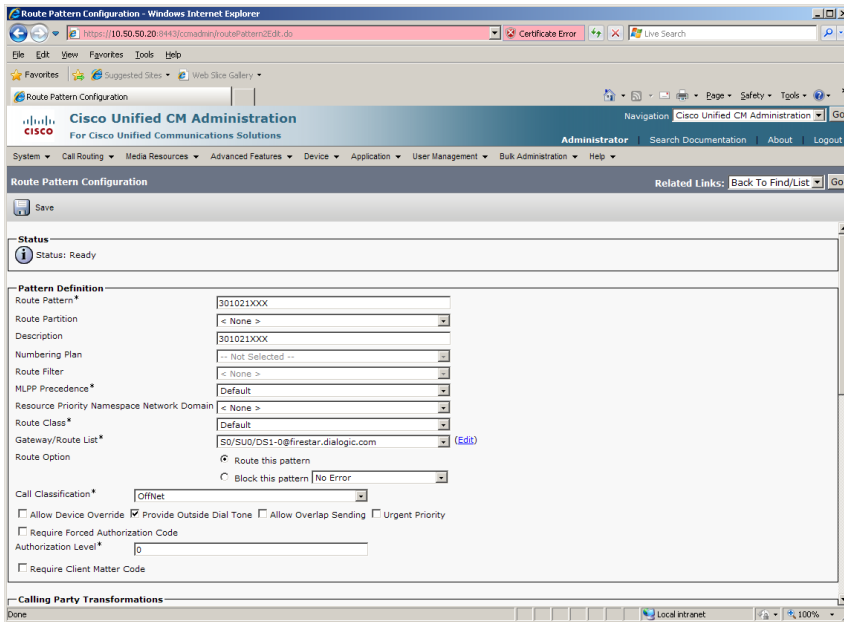


Press Add New.

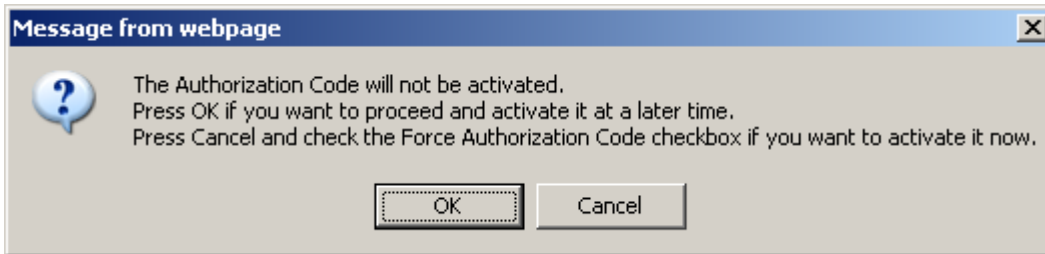
Set the following:

- Route Pattern: 301021XXX
- Description: 301021XXX
- Gateway/Route List: S0/SU0/DS1-0@firestar.dialogic.com
- Call Classification: OffNet

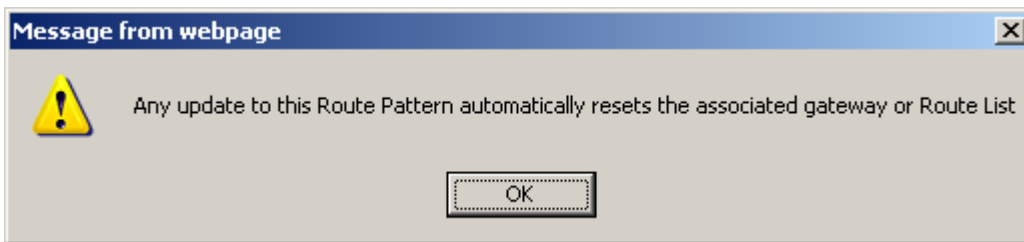
Note: S0/SU0/DS1-0@firestar.dialogic.com is the MGCP Trunk of the Gateway



Press Save.



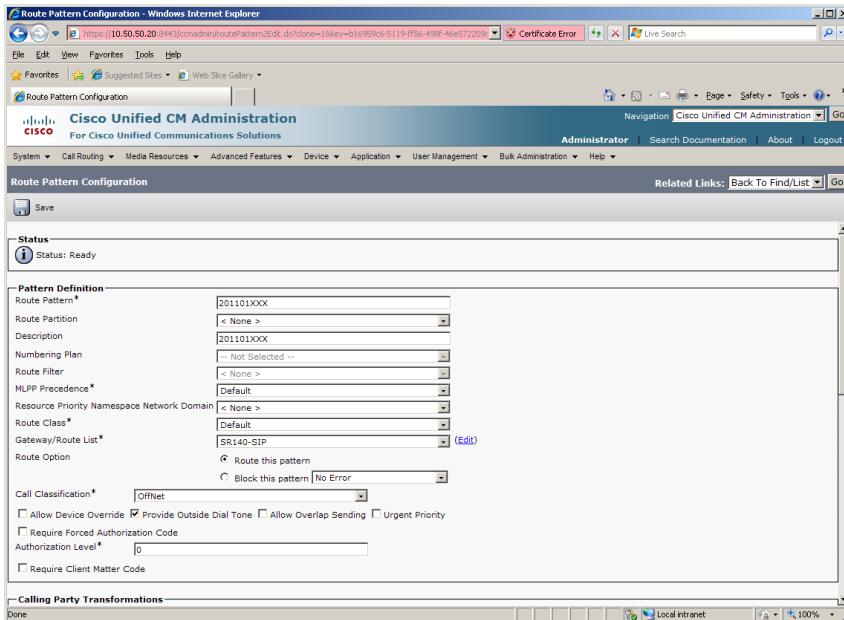
Press OK.



Press OK.

Repeat the same steps and set the following to route to the SR140:

- Route Pattern: 201101XXX
- Description: 201101XXX
- Gateway/Route List: SR140-SIP
- Call Classification: OffNet



8 References

- Dialogic® Brooktrout® Fax Products Installation and Configuration Guide for SDK 5.2.x, 6.0.x, and 6.1.x
<http://www.dialogic.com/manuals/brooktrout/default.htm>
- CUCM Documentation Roadmaps
http://www.cisco.com/en/US/products/sw/voicesw/ps556/products_documentation_roadmaps_list.html
- How to Configure MGCP with Digital PRI and Cisco CallManager, Document ID 23966:
http://www.cisco.com/en/US/tech/tk1077/technologies_configuration_example_09186a00801ad22f.shtml
- MGCP with Digital CAS and Cisco CallManager Configuration Example, Document ID 43802:
http://www.cisco.com/en/US/tech/tk1077/technologies_configuration_example_09186a008022eaa3.shtml
- Understanding Cisco IOS H.323 Gatekeeper Call Routing - Document ID 24462.
http://www.cisco.com/en/US/tech/tk1077/technologies_tech_note09186a00800_a8928.shtml